

**Joint Council Meeting #1 – Eastern Councils
Thursday, June 23, 2016**

**Dubose Porter Center
Oconee Fall Line Technical College
560 Pinehill Road
Dublin, GA 31021**

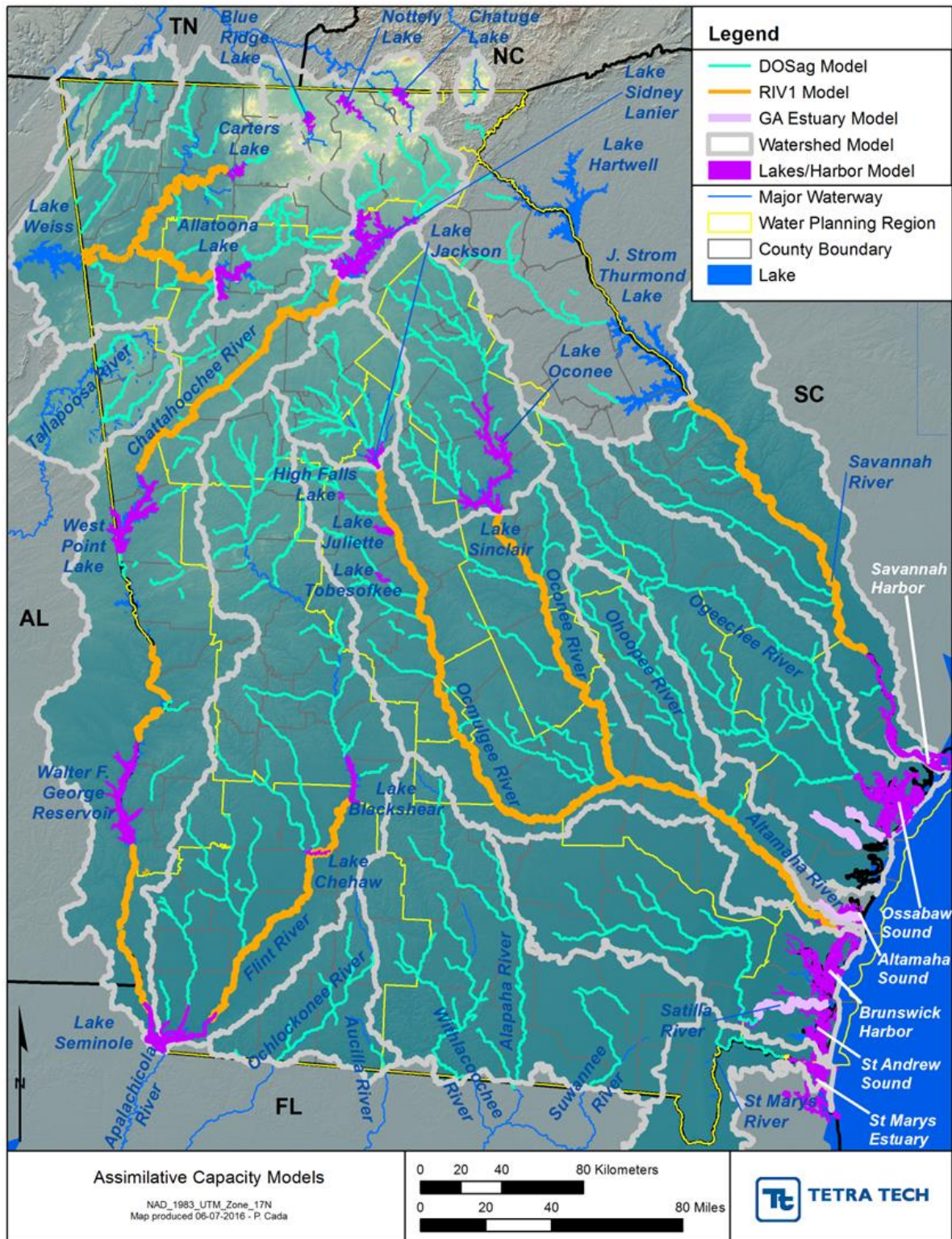


Joint Council Breakout Sessions: Resource Assessments and Joint Topics

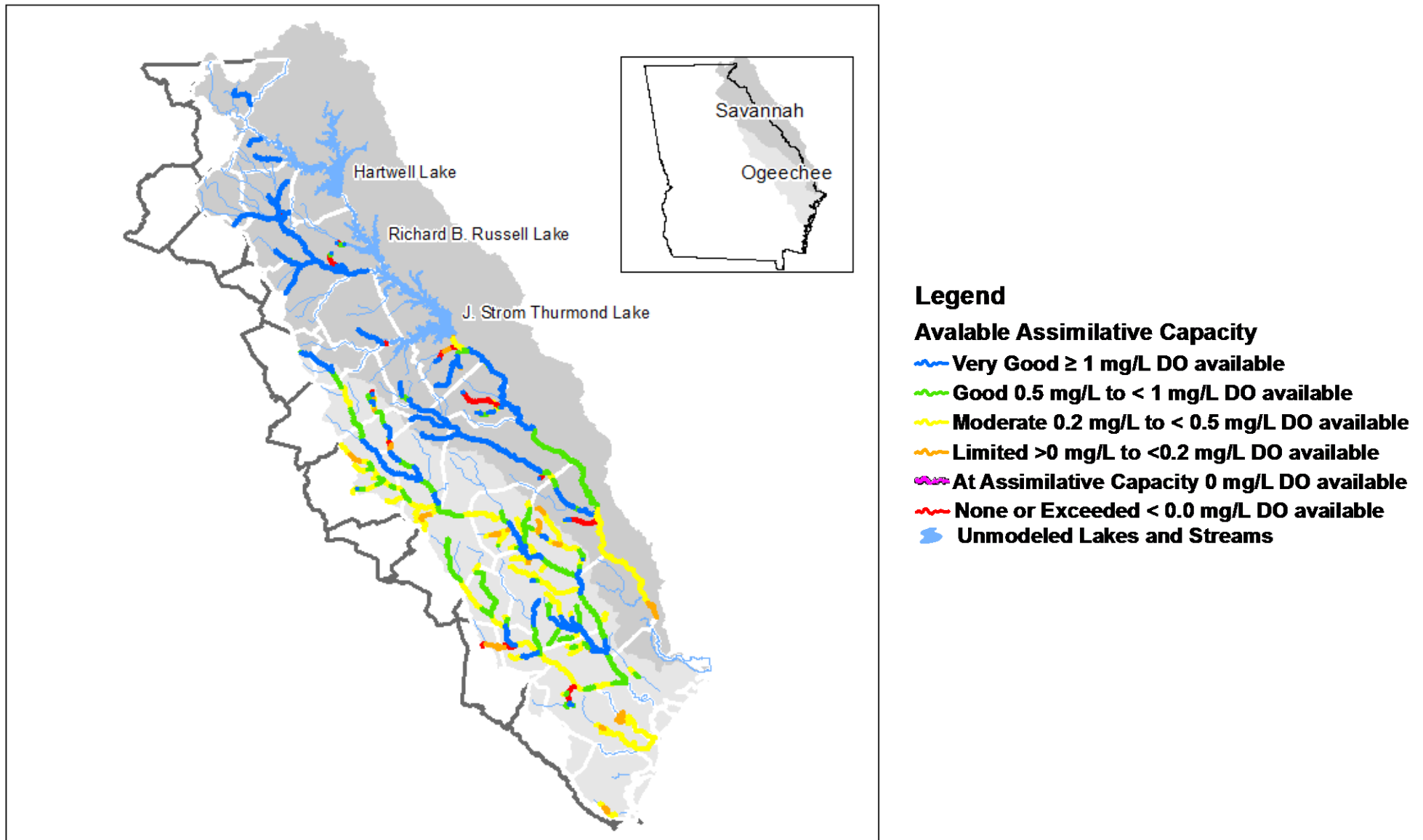
Session B Handouts

Coastal and Savannah-Upper Ogeechee Councils + members of Suwannee-Satilla Council

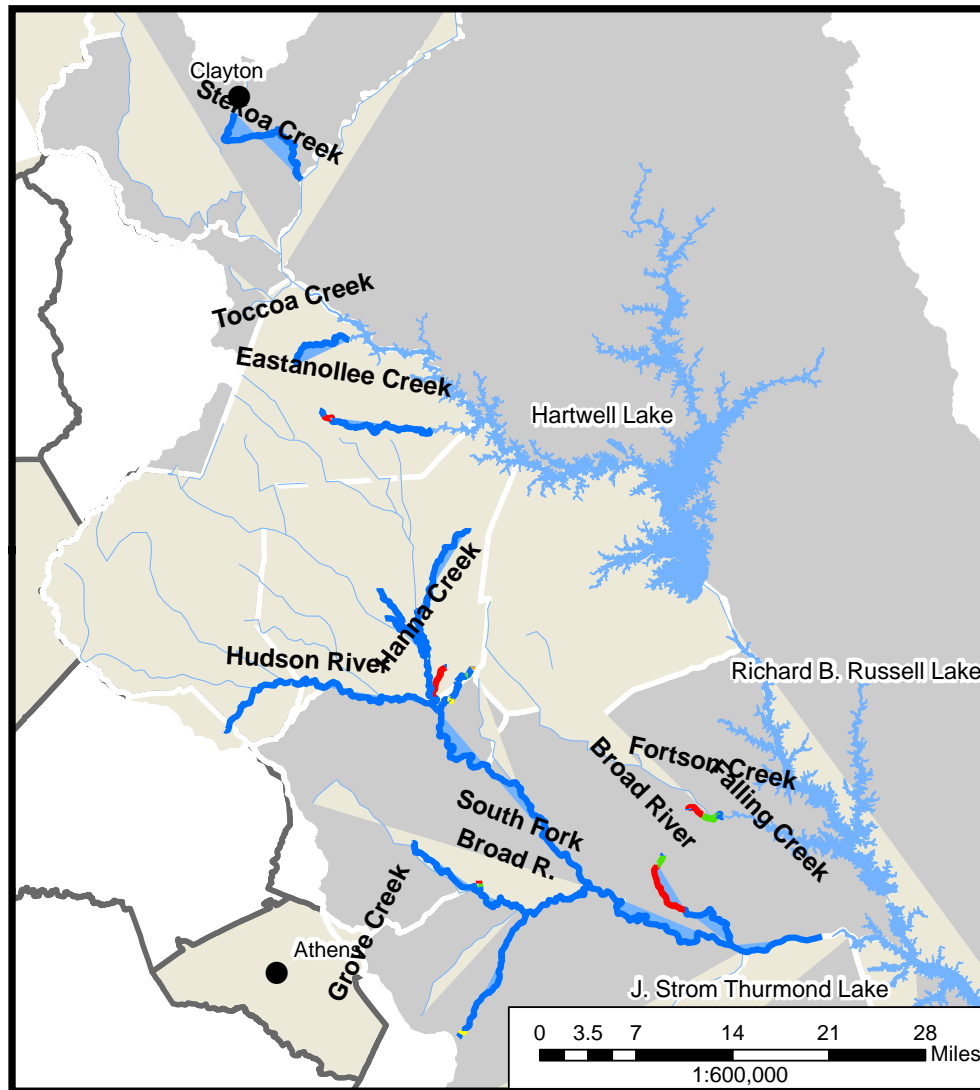
2016 CURRENT ASSIMILATIVE CAPACITY ASSESSMENT



SAVANNAH AND OGEECHEE GA DOSAG AND GA ESTUARY MODEL RESULTS



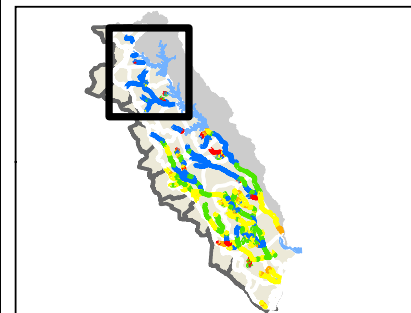
SAVANNAH GA DOSAG MODEL RESULTS



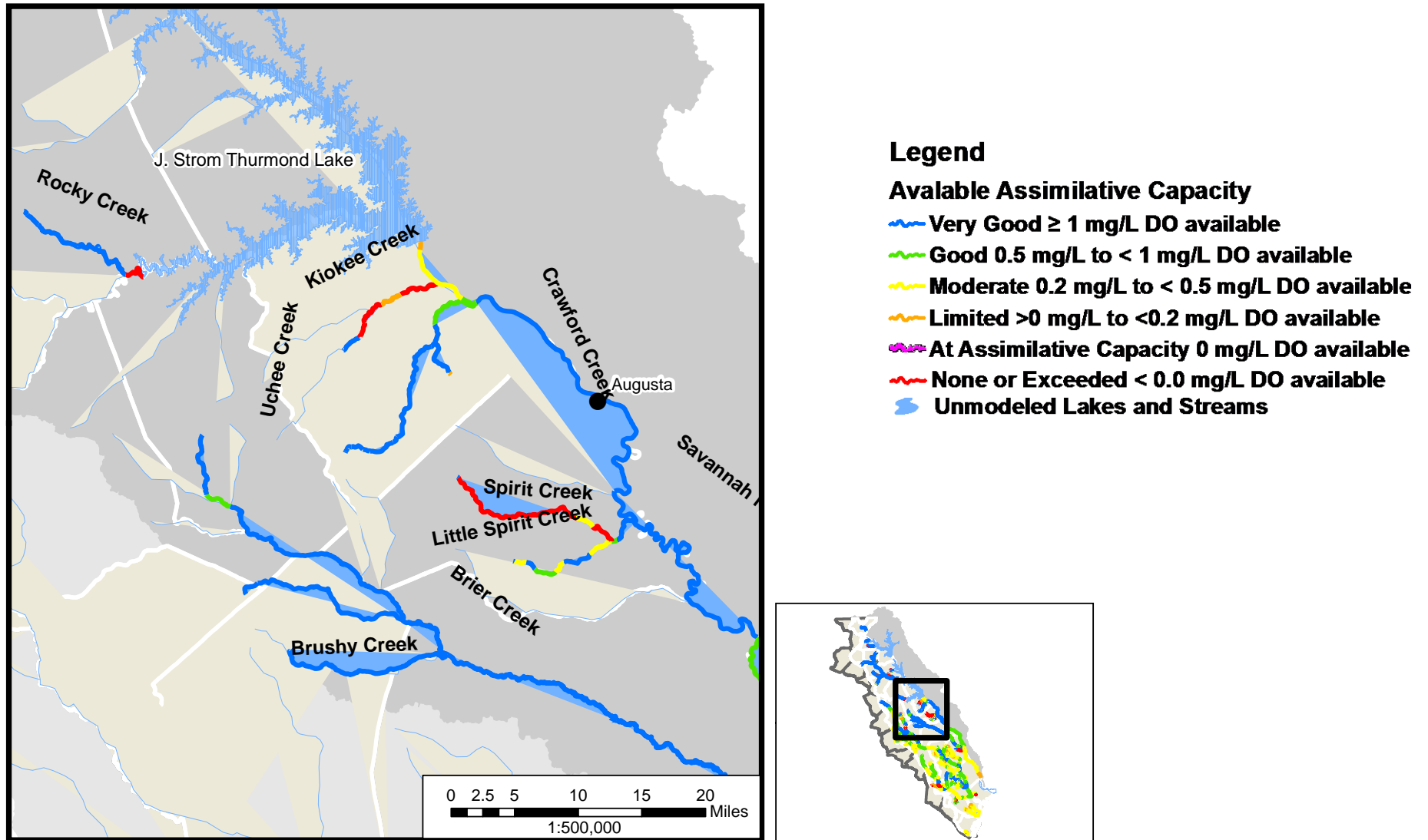
Legend

Available Assimilative Capacity

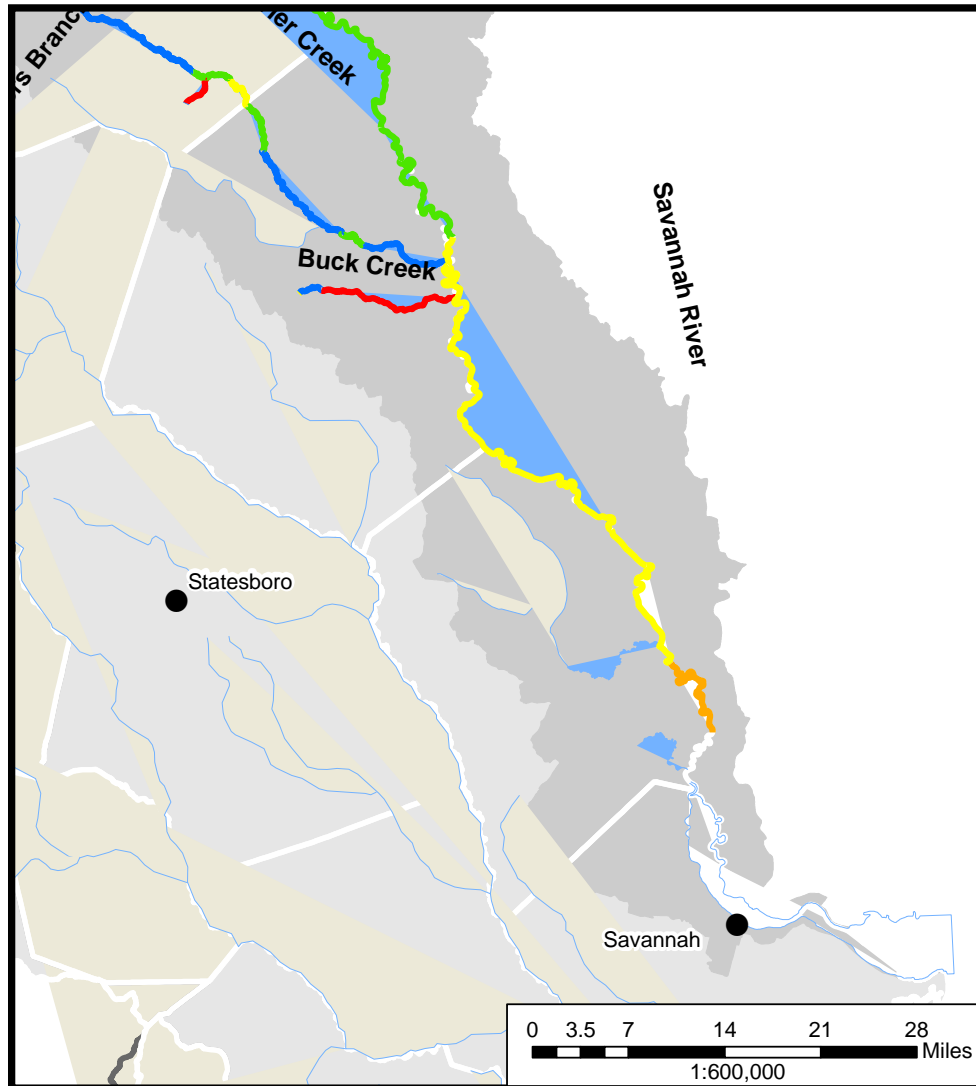
- ~ Very Good ≥ 1 mg/L DO available
- ~ Good 0.5 mg/L to < 1 mg/L DO available
- ~ Moderate 0.2 mg/L to < 0.5 mg/L DO available
- ~ Limited > 0 mg/L to < 0.2 mg/L DO available
- ~ At Assimilative Capacity 0 mg/L DO available
- ~ None or Exceeded < 0.0 mg/L DO available
- ~ Unmodeled Lakes and Streams



SAVANNAH GA DOSAG MODEL RESULTS



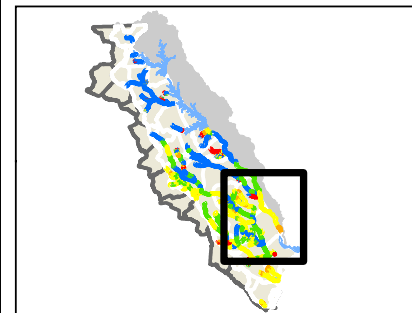
SAVANNAH GA DOSAG MODEL RESULTS



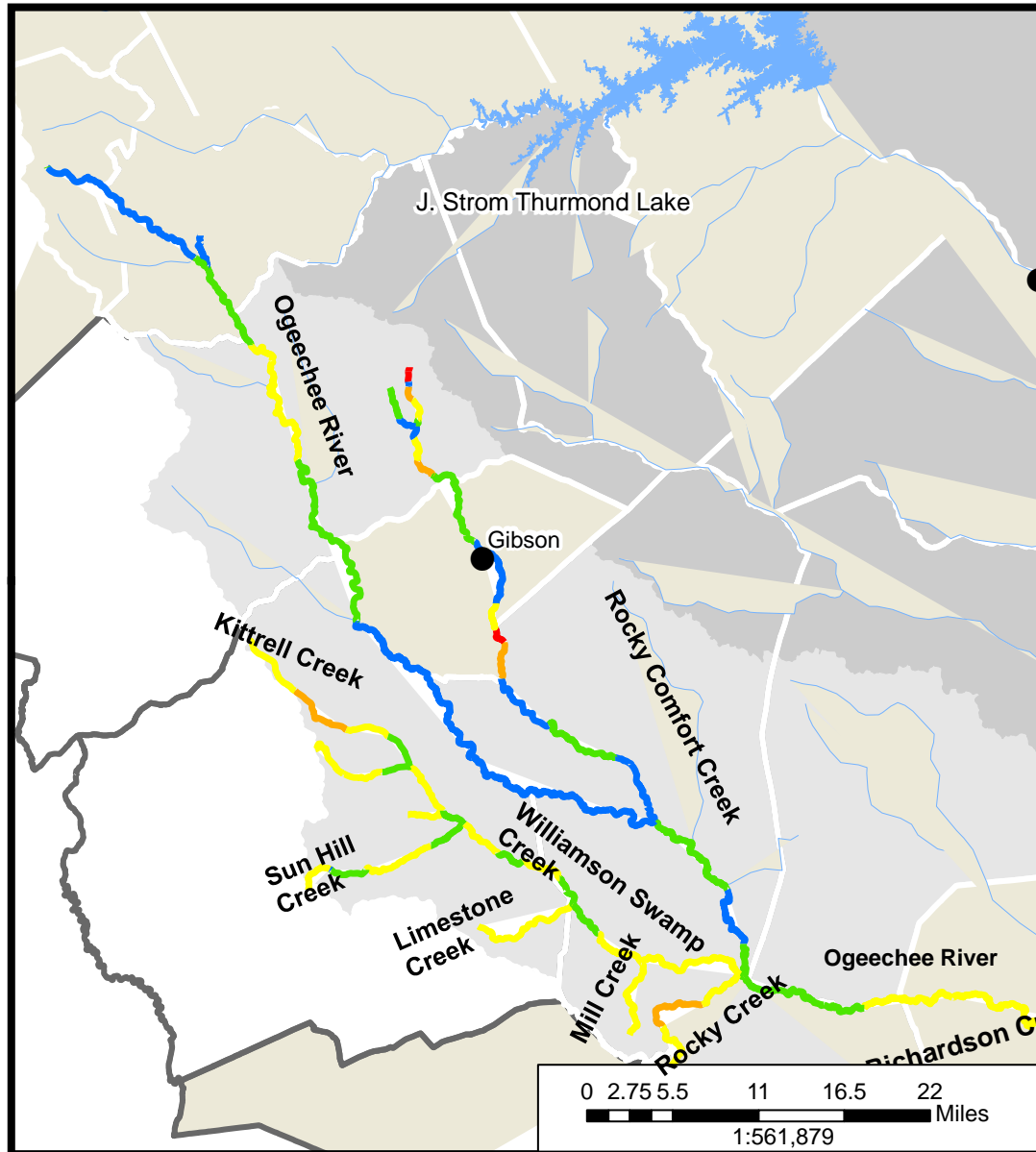
Legend

Available Assimilative Capacity

- Very Good ≥ 1 mg/L DO available
- Good 0.5 mg/L to < 1 mg/L DO available
- Moderate 0.2 mg/L to < 0.5 mg/L DO available
- Limited > 0 mg/L to < 0.2 mg/L DO available
- At Assimilative Capacity 0 mg/L DO available
- None or Exceeded < 0.0 mg/L DO available
- Unmodeled Lakes and Streams



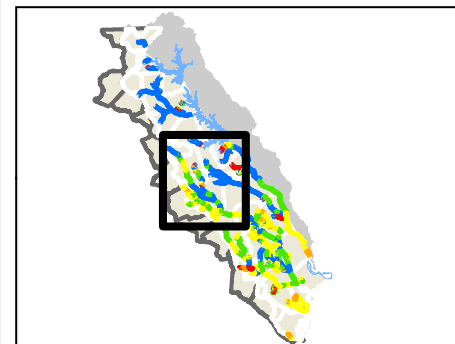
OGEECHEE GA DOSAG MODEL RESULTS



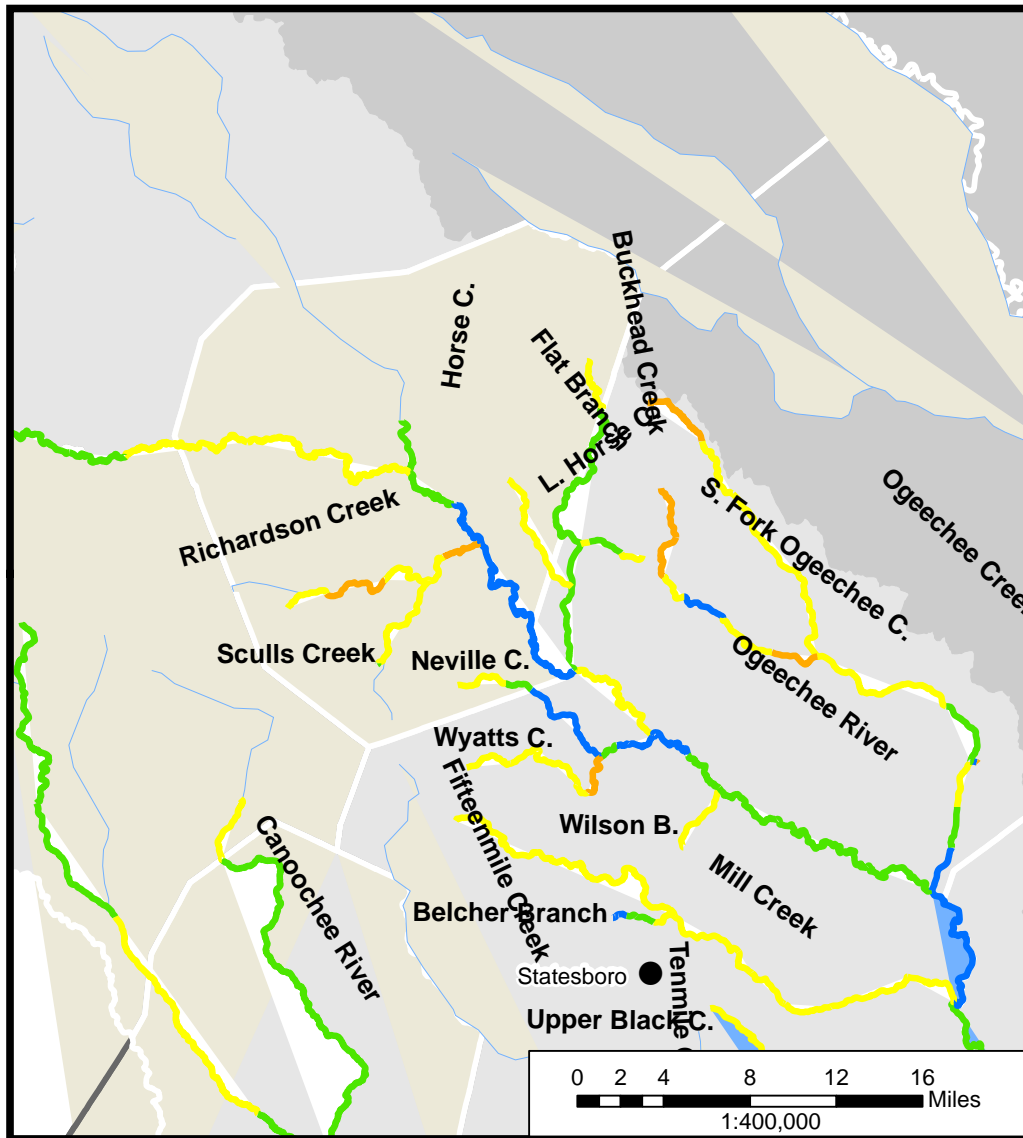
Legend

Available Assimilative Capacity

- Very Good ≥ 1 mg/L DO available
- Good 0.5 mg/L to < 1 mg/L DO available
- Moderate 0.2 mg/L to < 0.5 mg/L DO available
- Limited > 0 mg/L to < 0.2 mg/L DO available
- At Assimilative Capacity 0 mg/L DO available
- None or Exceeded < 0.0 mg/L DO available
- Unmodeled Lakes and Streams



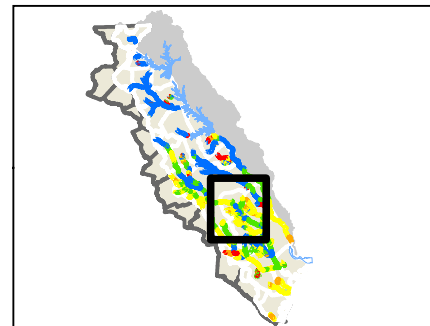
OGEECHEE GA DOSAG MODEL RESULTS



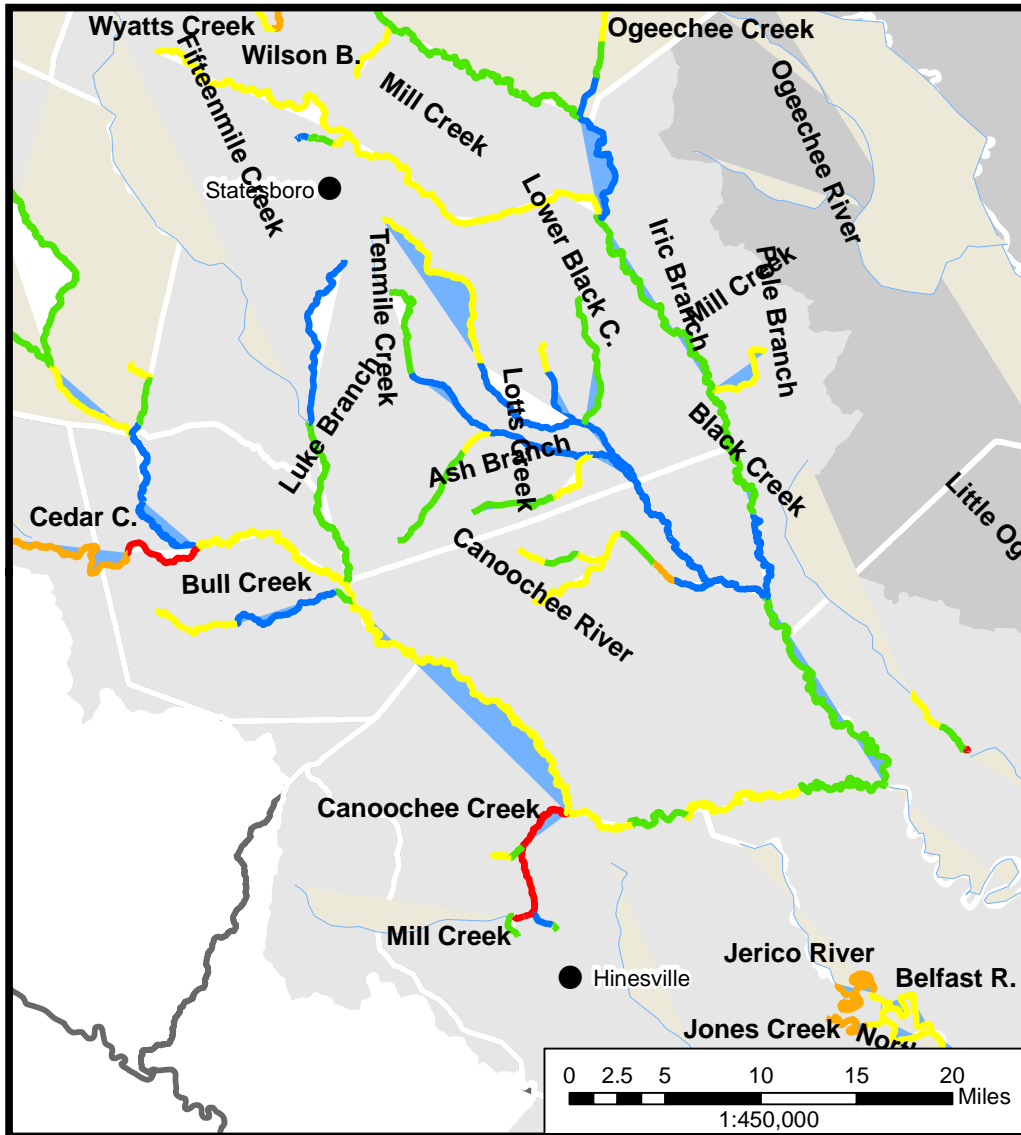
Legend

Available Assimilative Capacity

- Very Good ≥ 1 mg/L DO available
- Good 0.5 mg/L to < 1 mg/L DO available
- Moderate 0.2 mg/L to < 0.5 mg/L DO available
- Limited > 0 mg/L to < 0.2 mg/L DO available
- At Assimilative Capacity 0 mg/L DO available
- None or Exceeded < 0.0 mg/L DO available
- Unmodeled Lakes and Streams



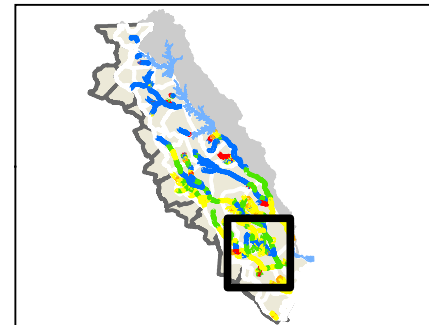
OGEECHEE GA DOSAG MODEL RESULTS



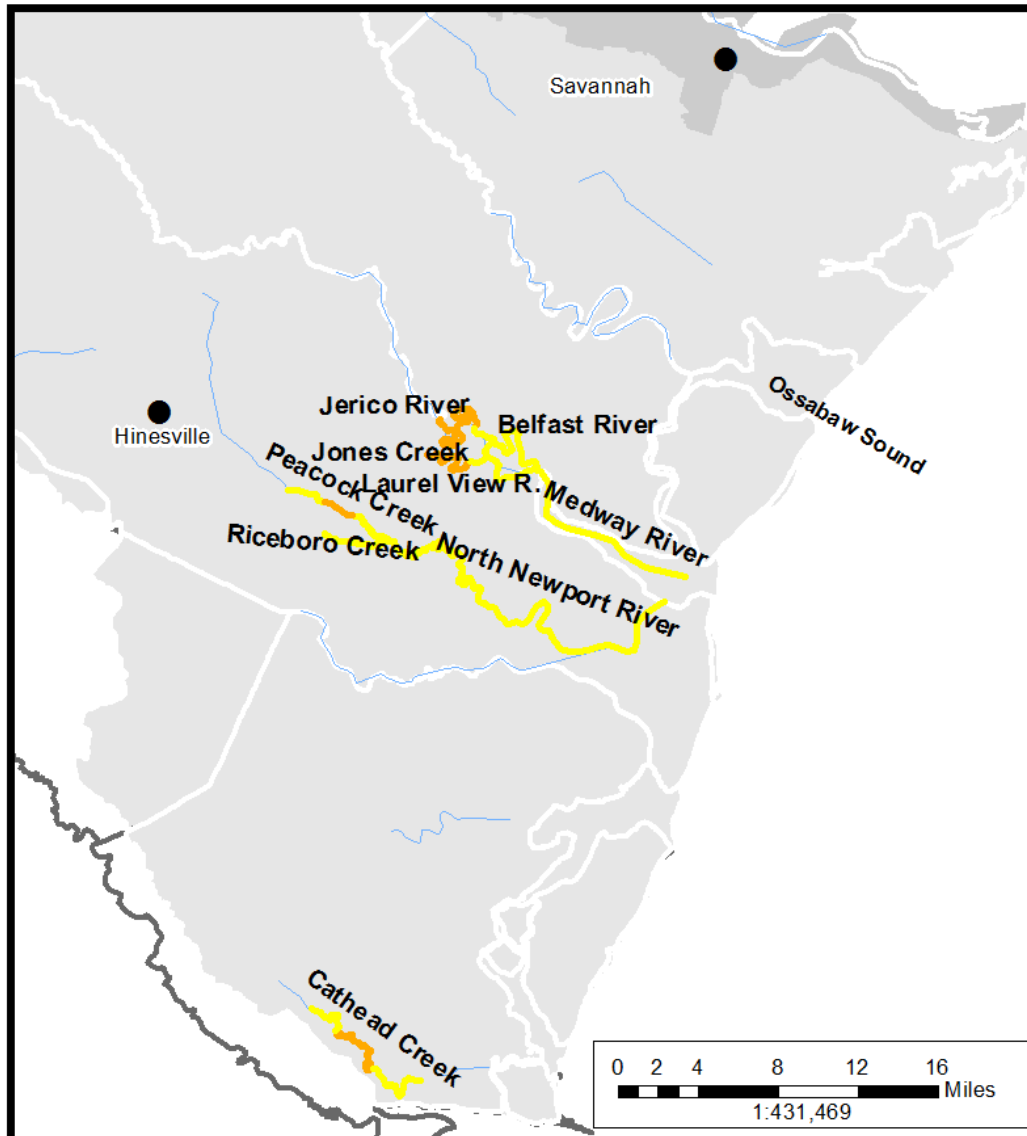
Legend

Available Assimilative Capacity

- Very Good ≥ 1 mg/L DO available
- Good 0.5 mg/L to < 1 mg/L DO available
- Moderate 0.2 mg/L to < 0.5 mg/L DO available
- Limited > 0 mg/L to < 0.2 mg/L DO available
- At Assimilative Capacity 0 mg/L DO available
- None or Exceeded < 0.0 mg/L DO available
- Unmodeled Lakes and Streams



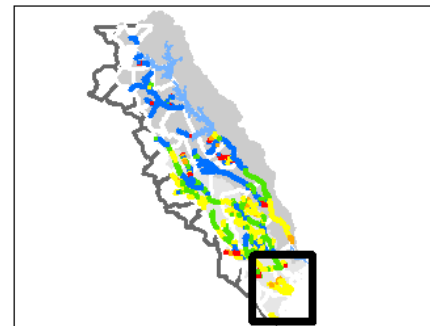
OGEECHEE GA ESTUARY MODEL RESULTS



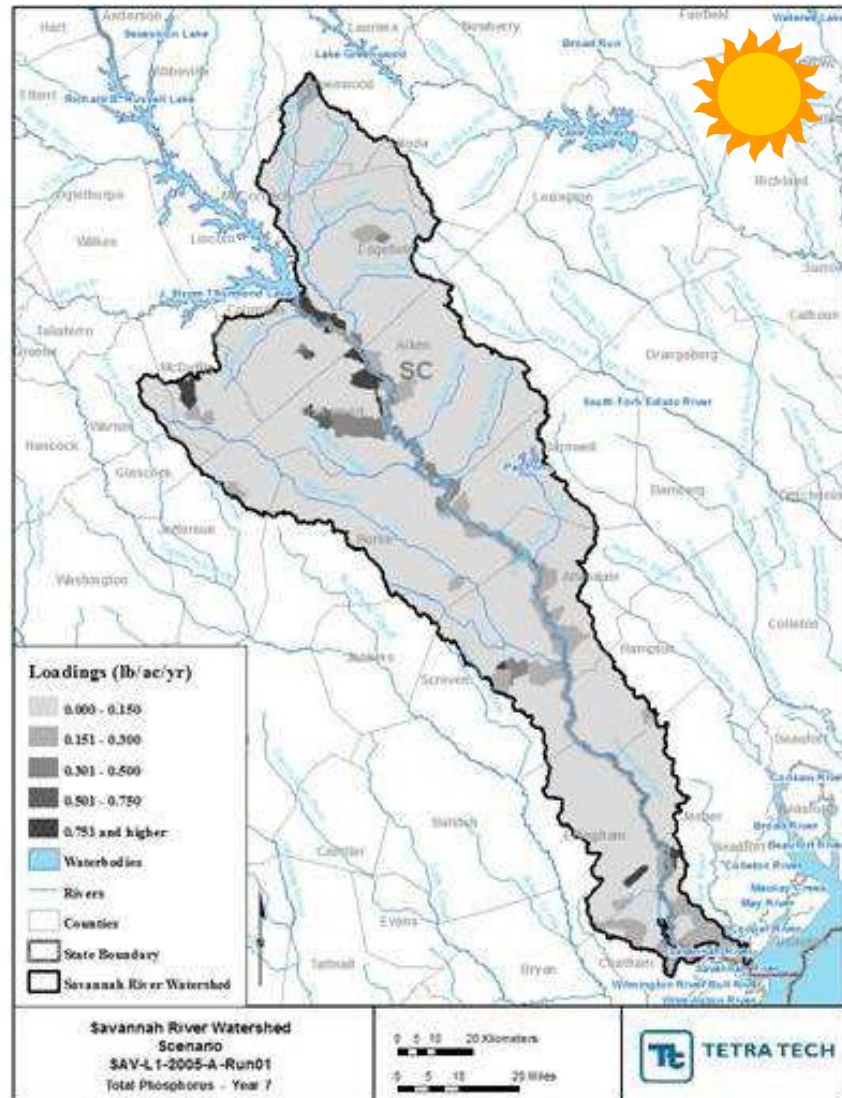
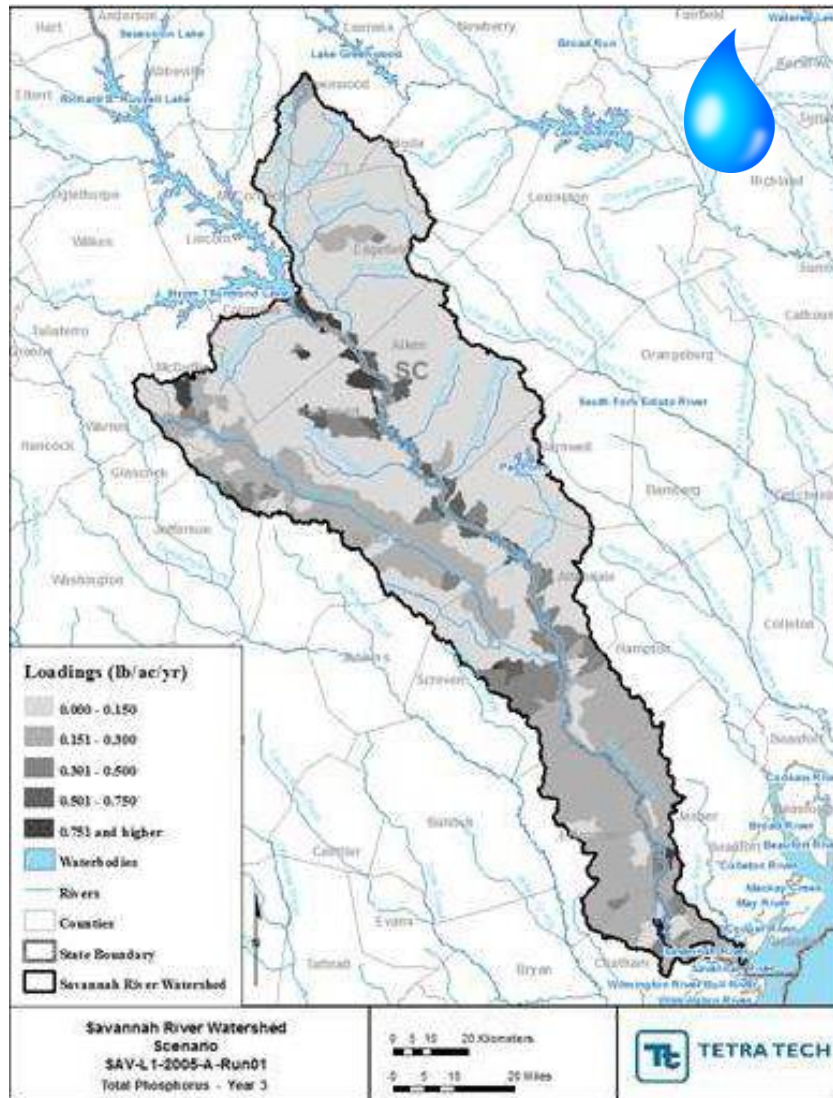
Legend

Available Assimilative Capacity

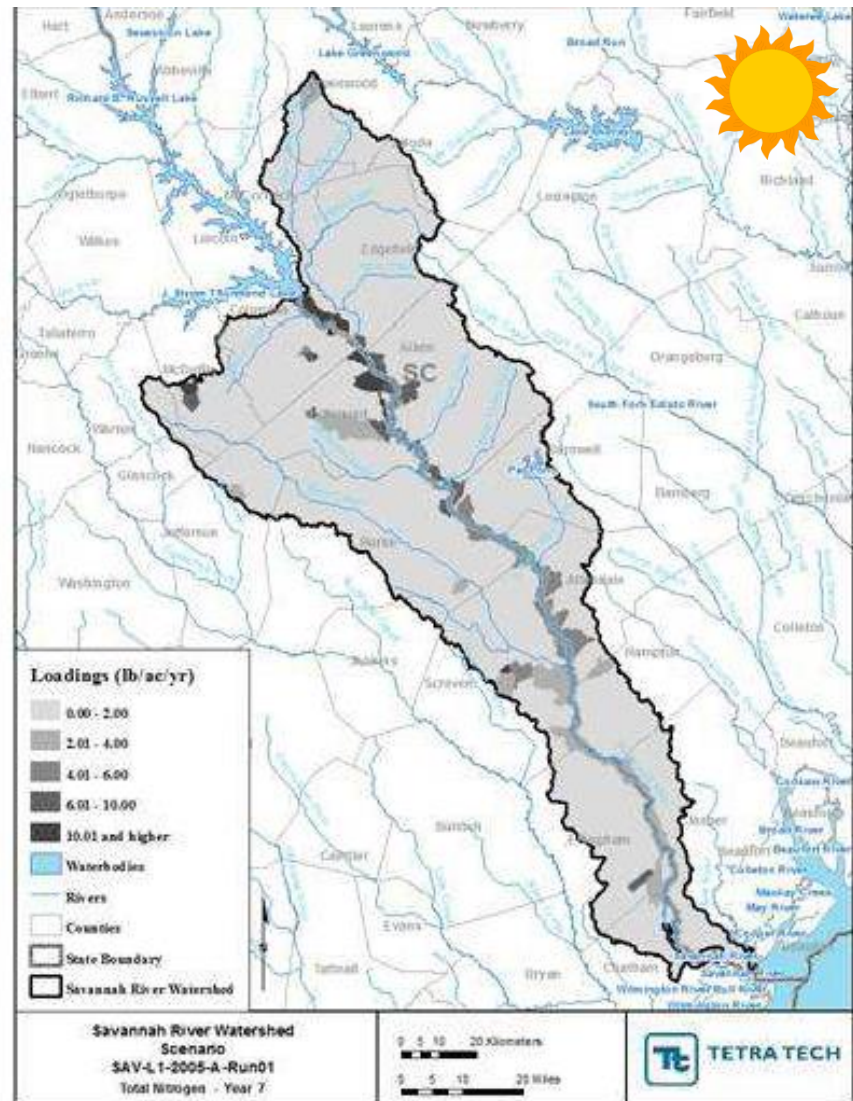
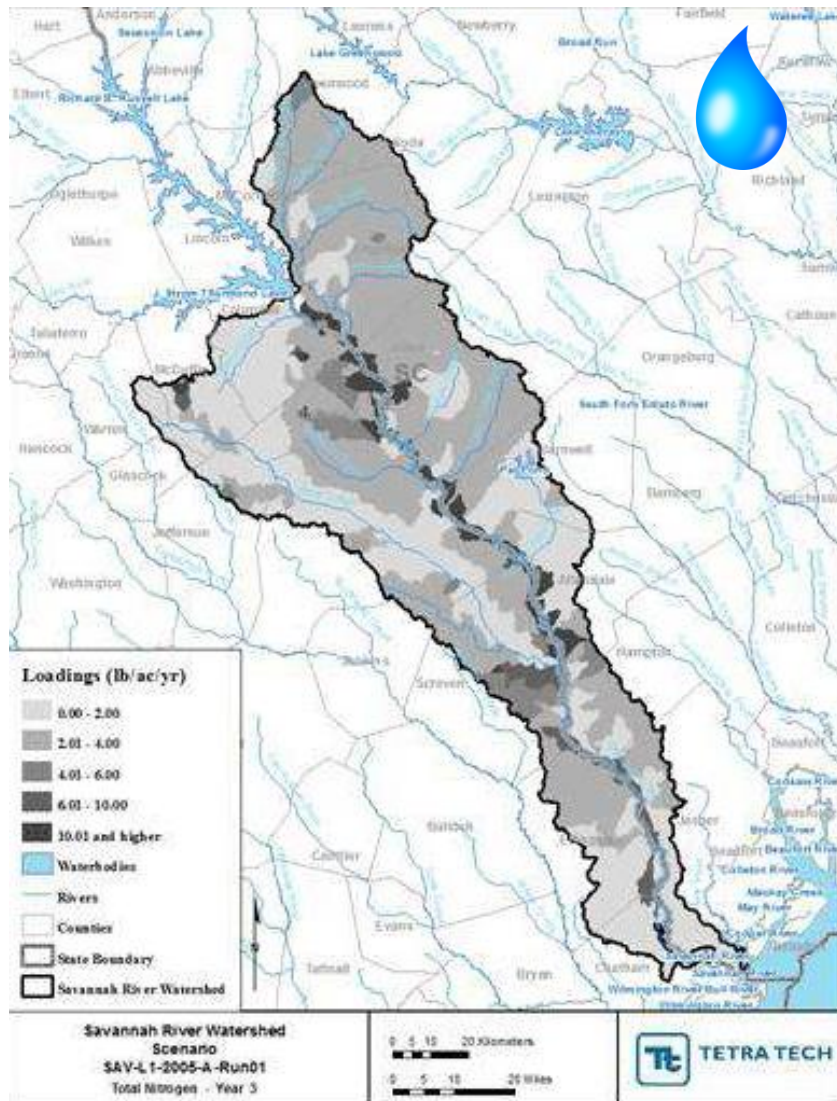
- ~ Very Good ≥ 1 mg/L DO available
- ~ Good 0.5 mg/L to < 1 mg/L DO available
- ~ Moderate 0.2 mg/L to < 0.5 mg/L DO available
- ~ Limited > 0 mg/L to < 0.2 mg/L DO available
- ~ At Assimilative Capacity 0 mg/L DO available
- ~ None or Exceeded < 0.0 mg/L DO available
- ~ Unmodeled Lakes and Streams



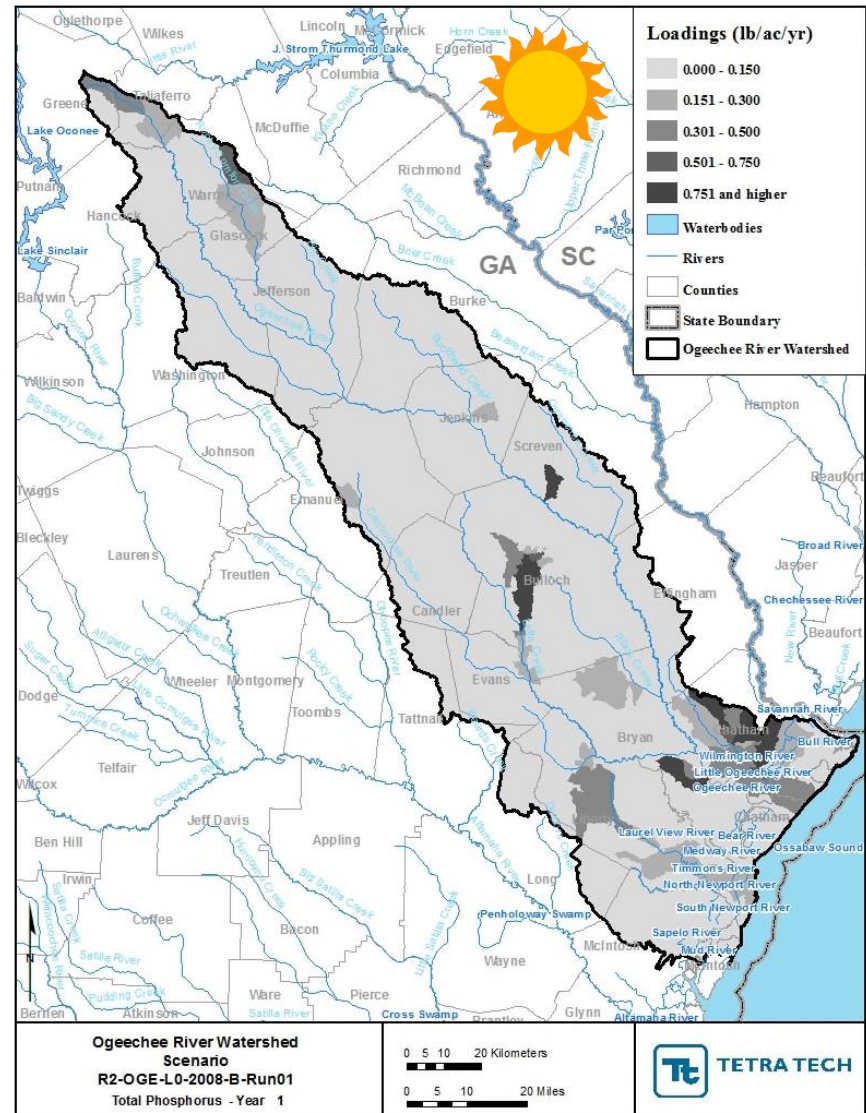
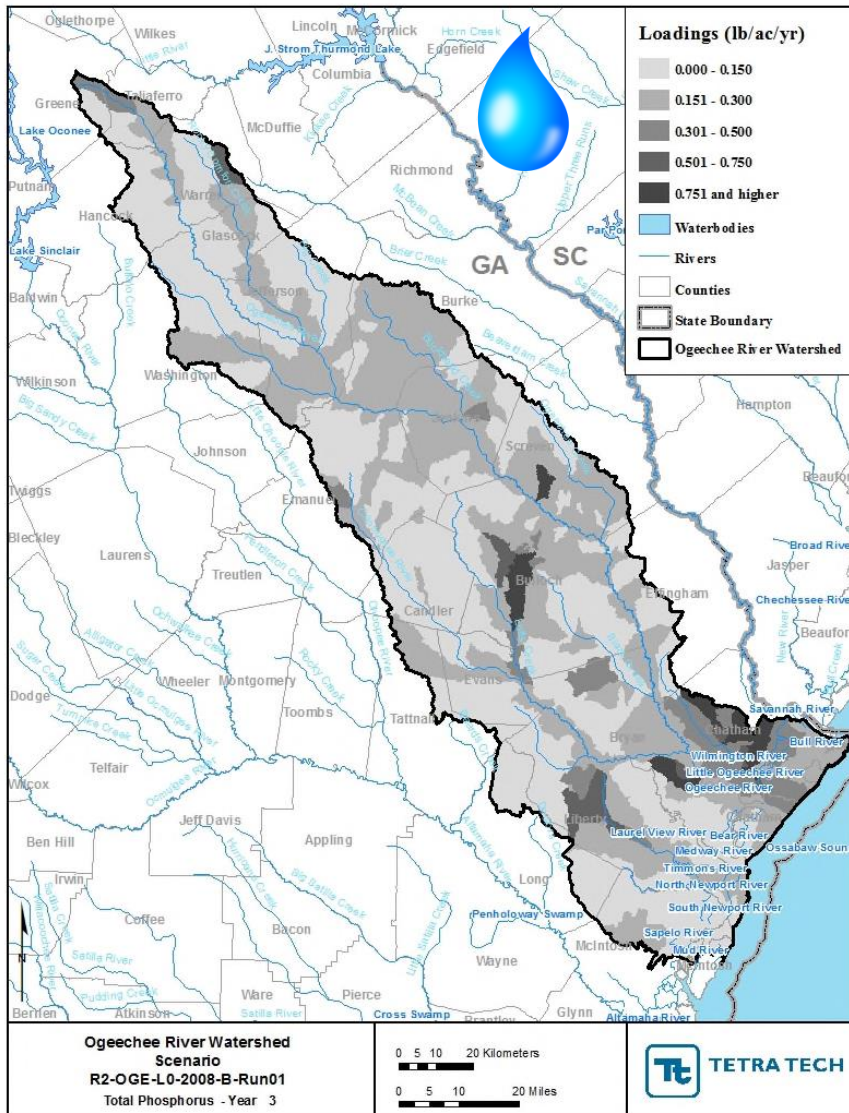
SAVANNAH TOTAL P HEAT MAPS



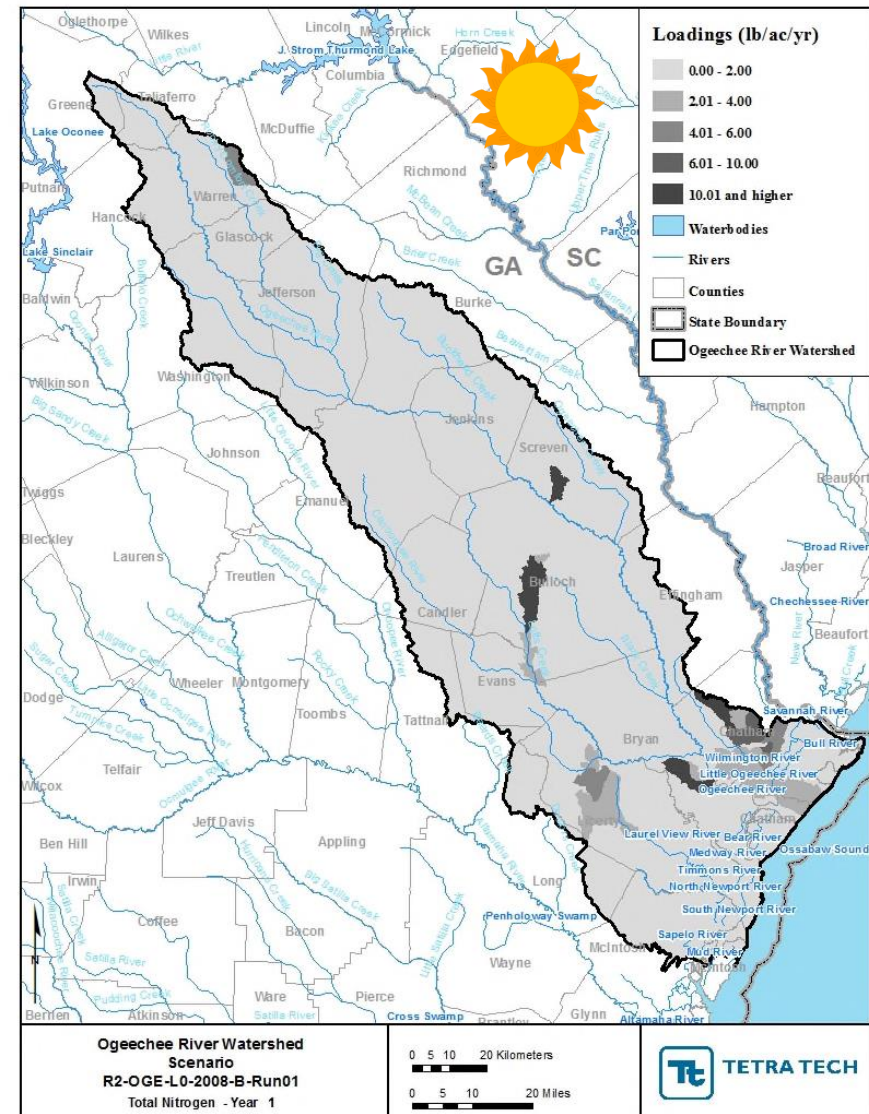
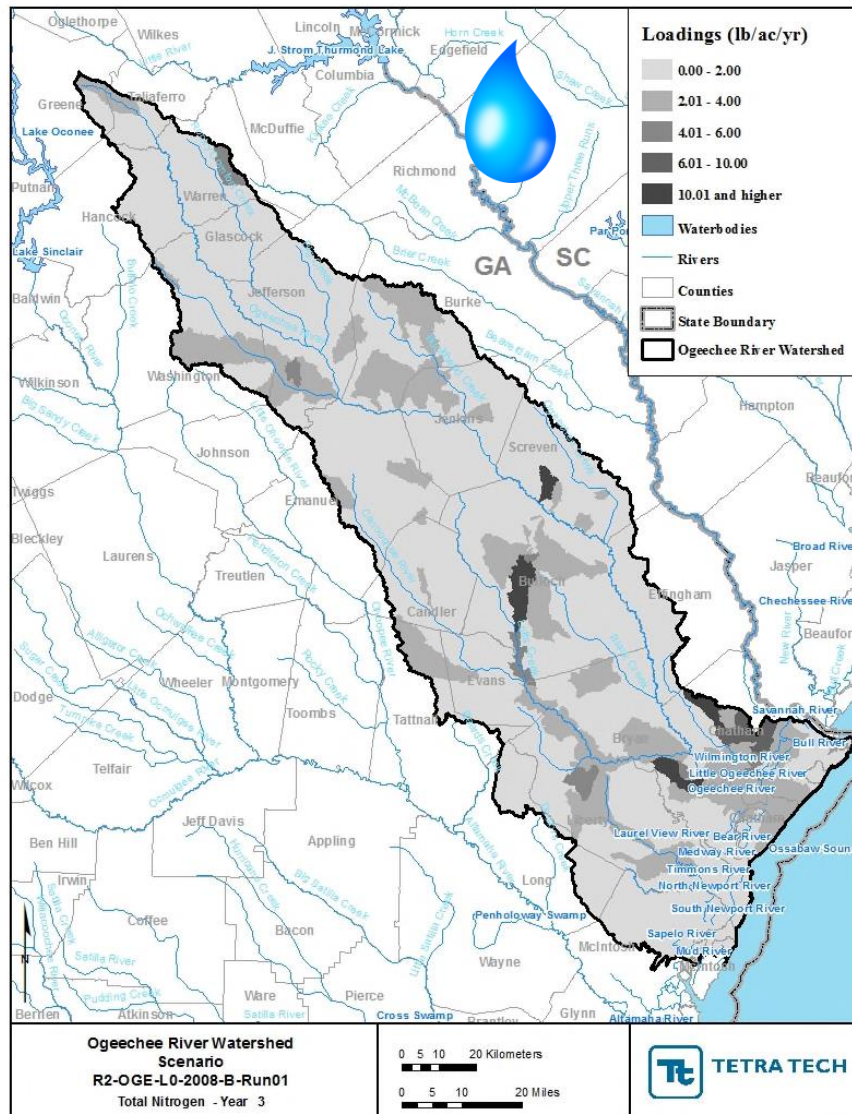
SAVANNAH TOTAL N HEAT MAPS



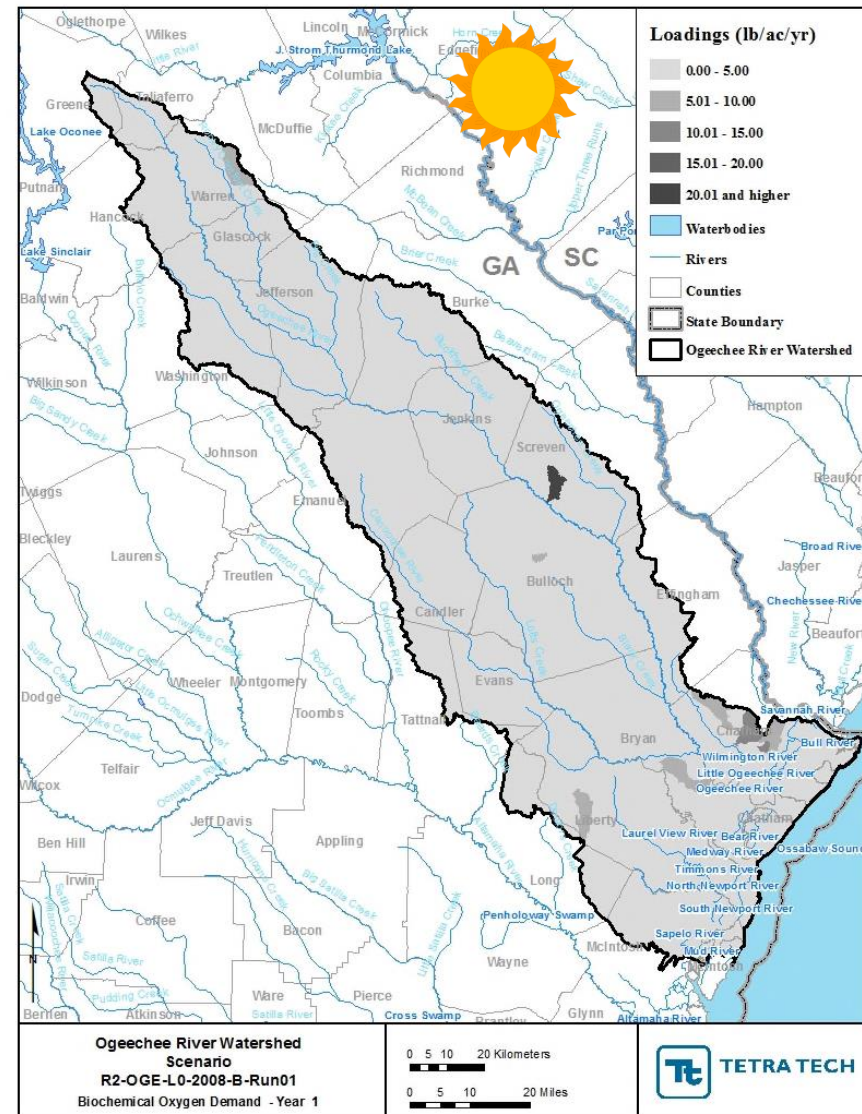
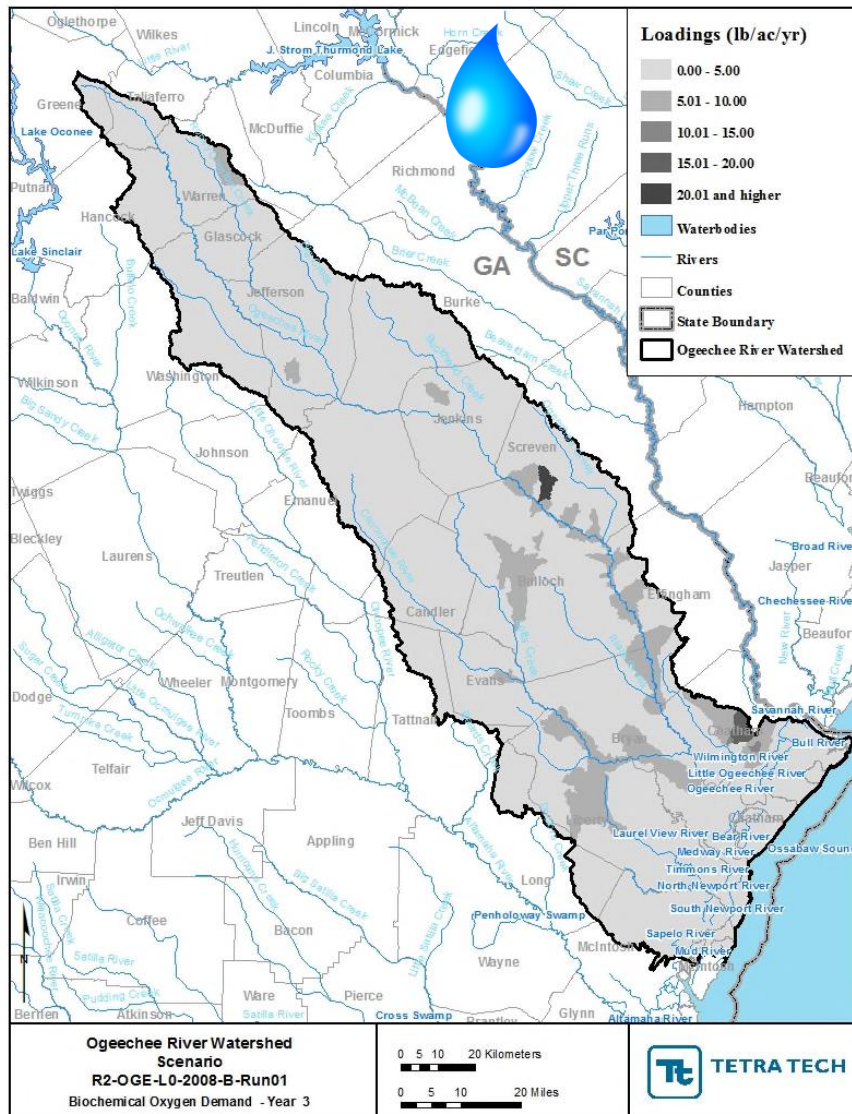
OGEECHEE TOTAL P HEAT MAPS



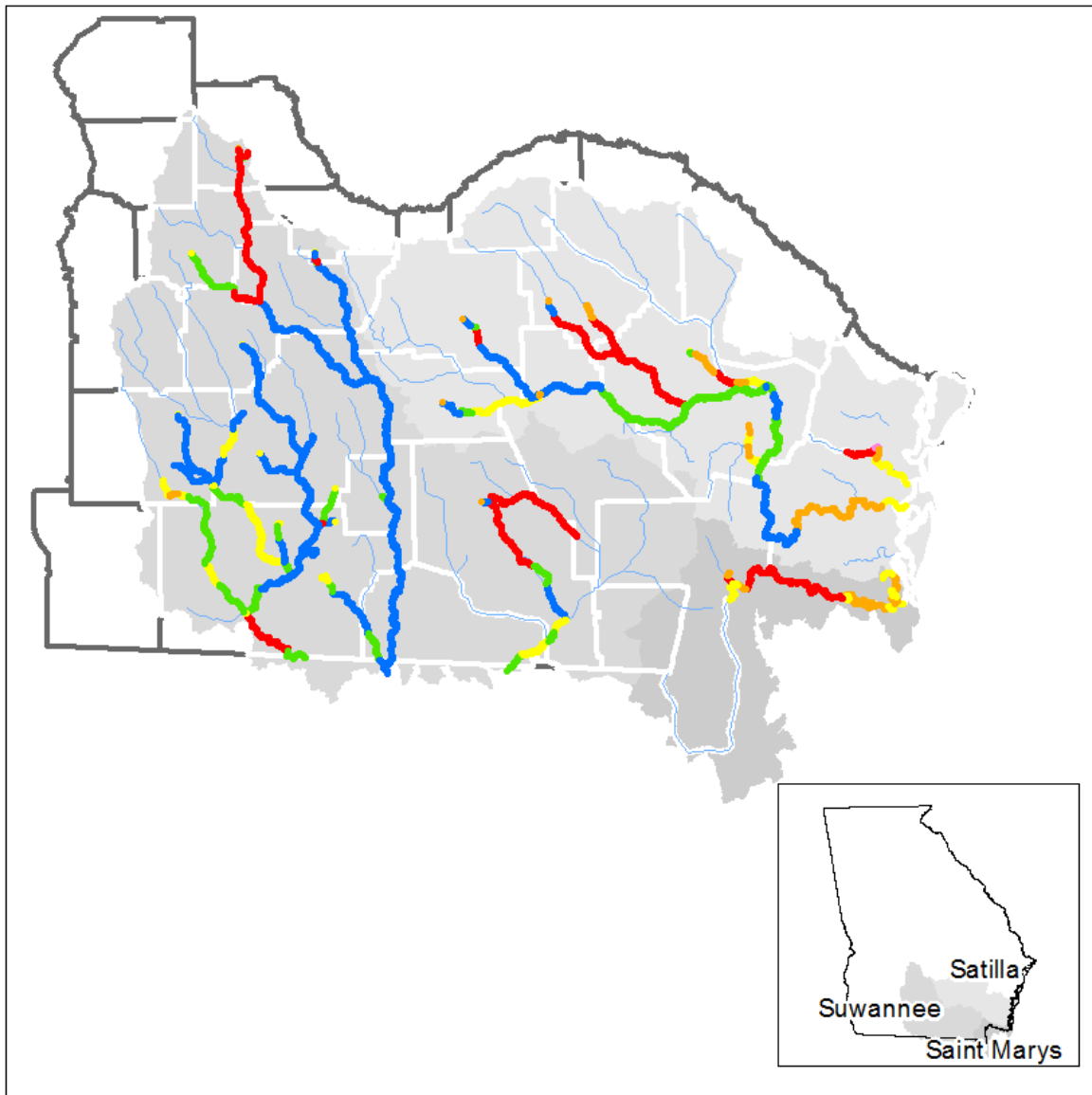
OGEECHEE TOTAL N HEAT MAPS



OGEECHEE BOD HEAT MAPS



SUWANNEE, SATILLA, ST MARYS GA DOSAG AND GA ESTUARY MODEL RESULTS

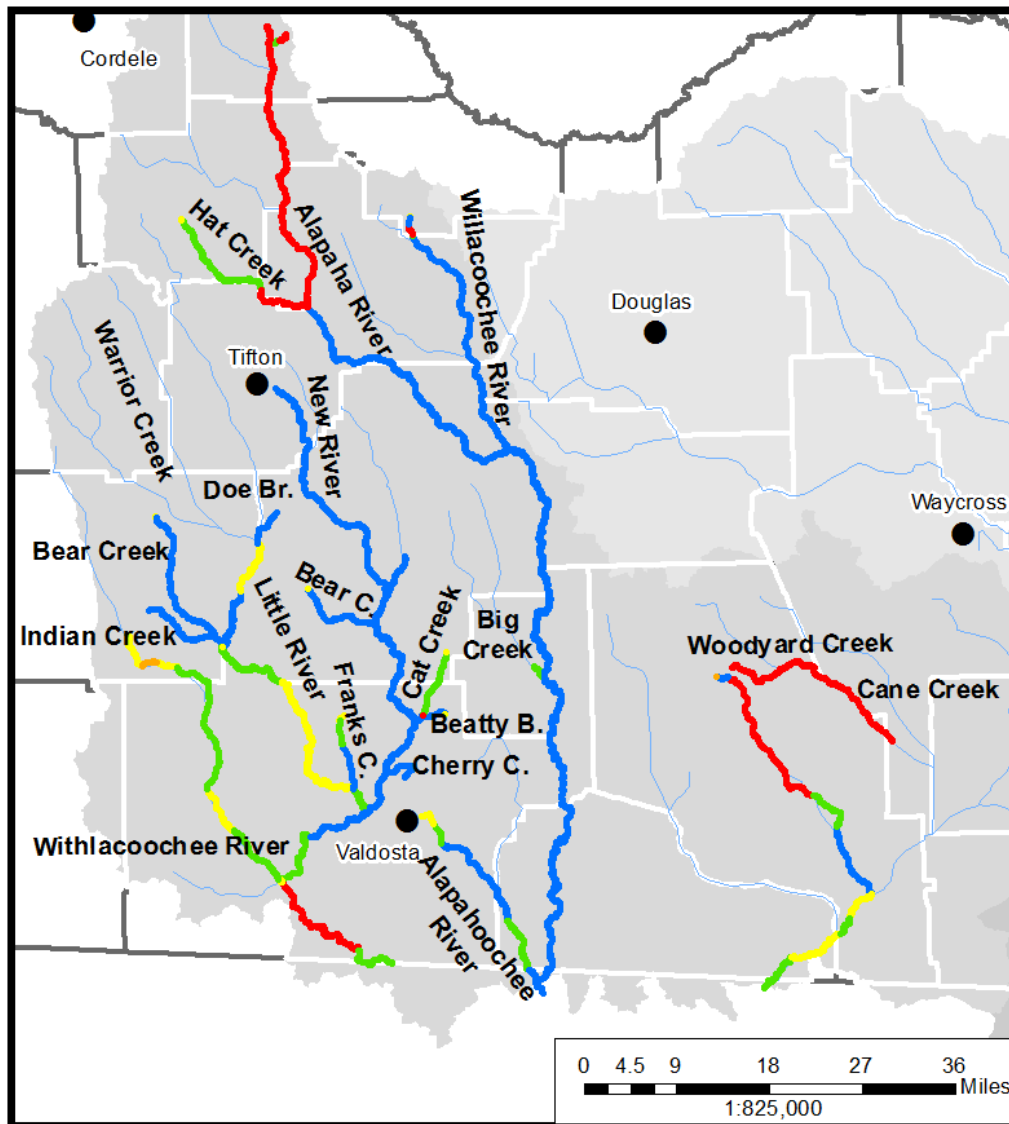


Legend

Available Assimilative Capacity

- Very Good ≥ 1 mg/L DO available
- Good 0.5 mg/L to < 1 mg/L DO available
- Moderate 0.2 mg/L to < 0.5 mg/L DO available
- Limited > 0 mg/L to < 0.2 mg/L DO available
- At Assimilative Capacity 0 mg/L DO available
- None or Exceeded < 0.0 mg/L DO available
- Unmodeled Lakes and Streams

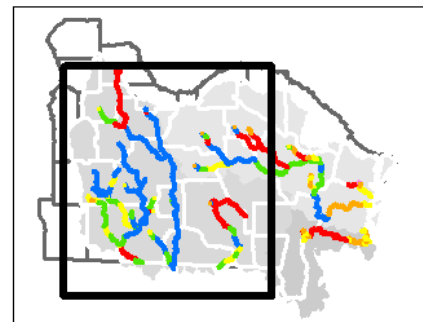
SUWANNEE GA DOSAG MODEL RESULTS



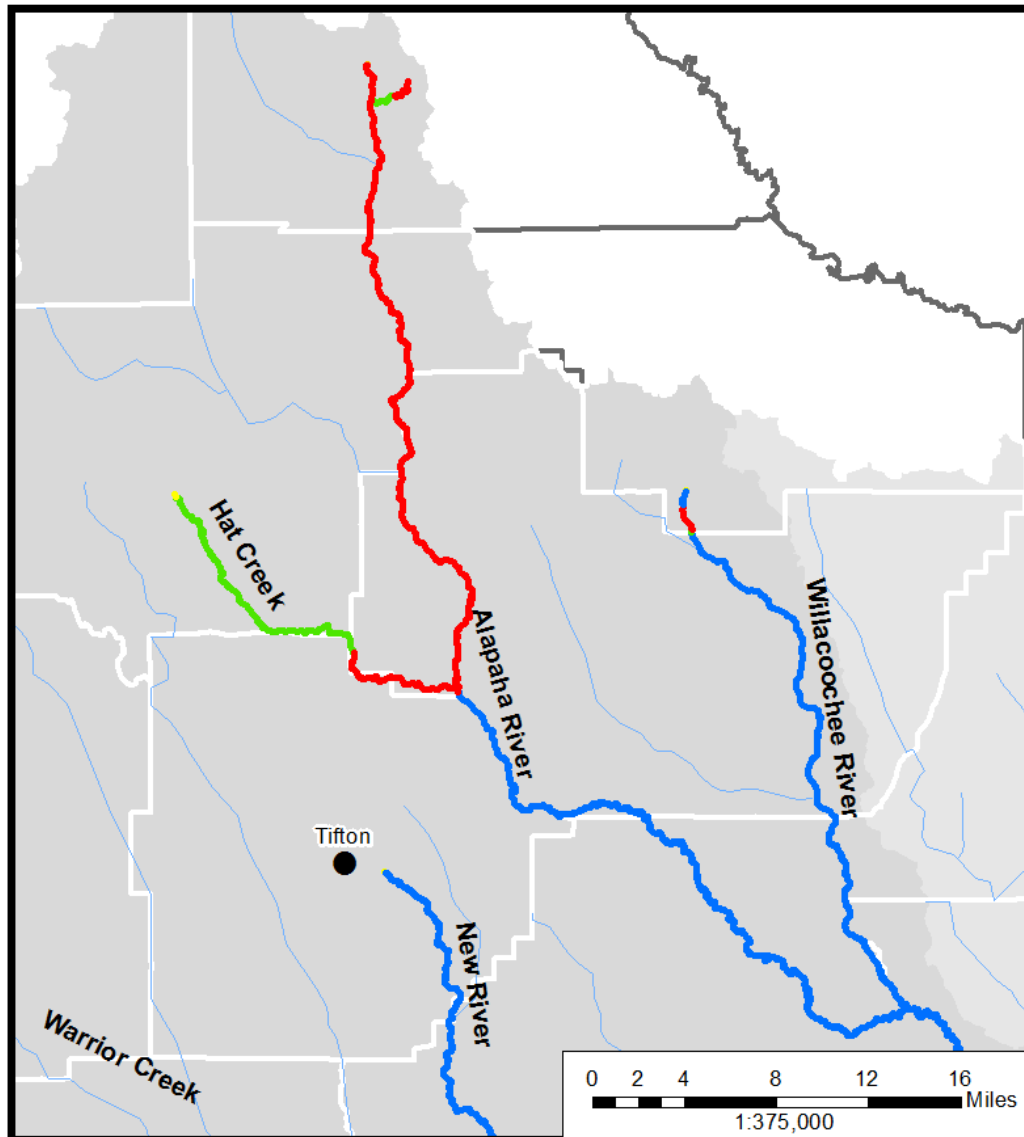
Legend

Available Assimilative Capacity

- ~ Very Good ≥ 1 mg/L DO available
- ~ Good 0.5 mg/L to < 1 mg/L DO available
- ~ Moderate 0.2 mg/L to < 0.5 mg/L DO available
- ~ Limited > 0 mg/L to < 0.2 mg/L DO available
- ~ At Assimilative Capacity 0 mg/L DO available
- ~ None or Exceeded < 0.0 mg/L DO available
- ~ Unmodeled Lakes and Streams



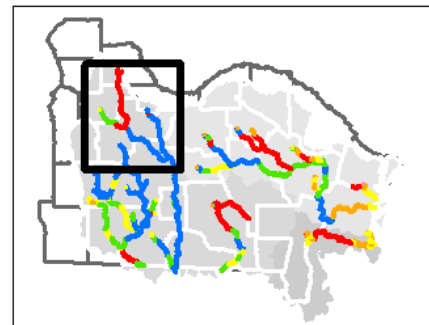
SUWANNEE GA DOSAG MODEL RESULTS



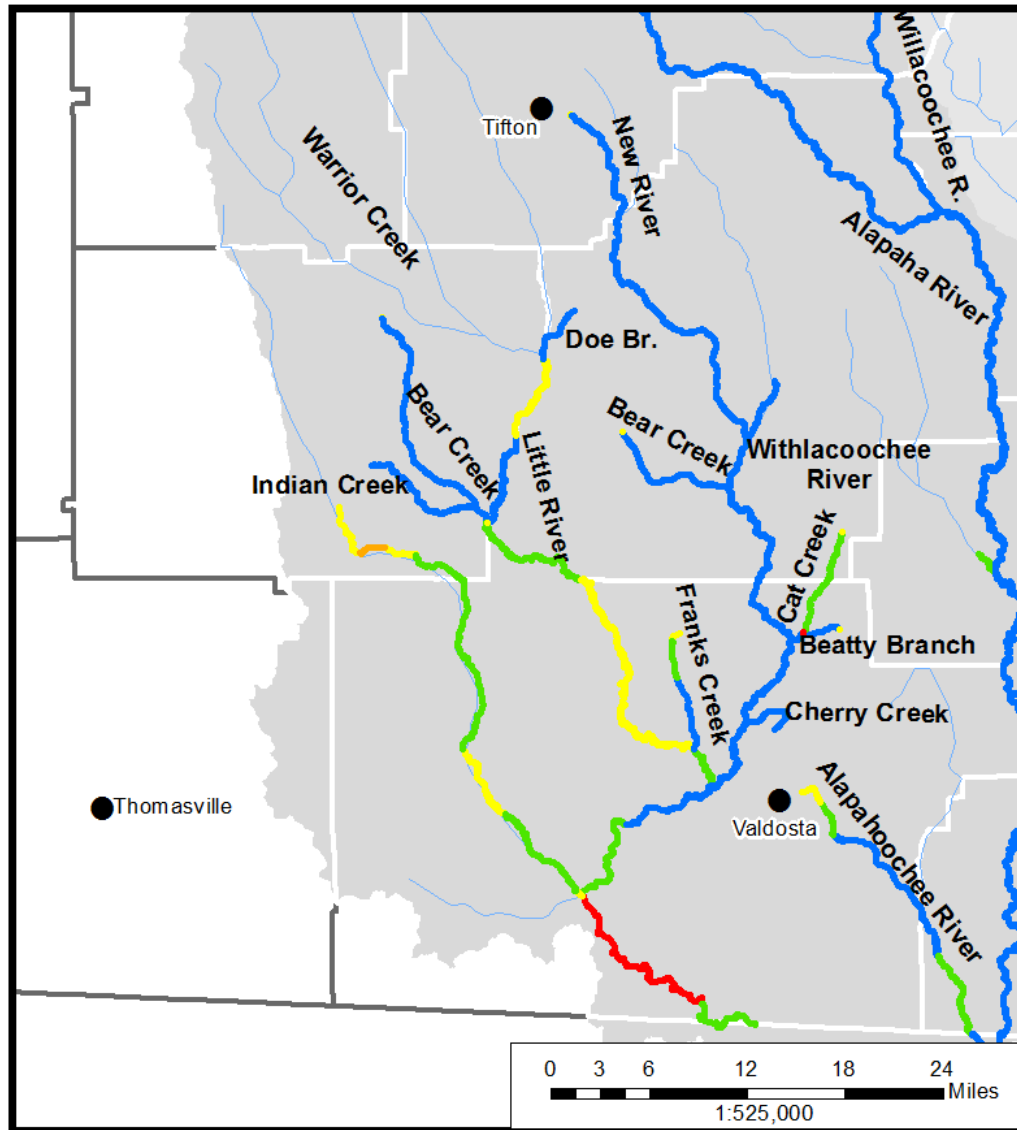
Legend

Available Assimilative Capacity

- Very Good ≥ 1 mg/L DO available
- Good 0.5 mg/L to < 1 mg/L DO available
- Moderate 0.2 mg/L to < 0.5 mg/L DO available
- Limited > 0 mg/L to < 0.2 mg/L DO available
- At Assimilative Capacity 0 mg/L DO available
- None or Exceeded < 0.0 mg/L DO available
- Unmodeled Lakes and Streams



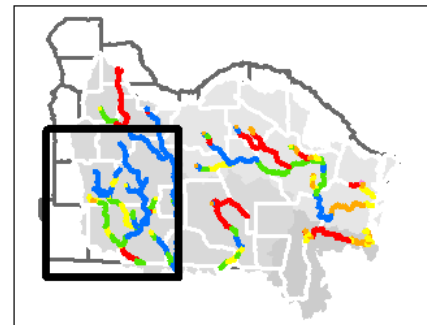
SUWANNEE GA DOSAG MODEL RESULTS



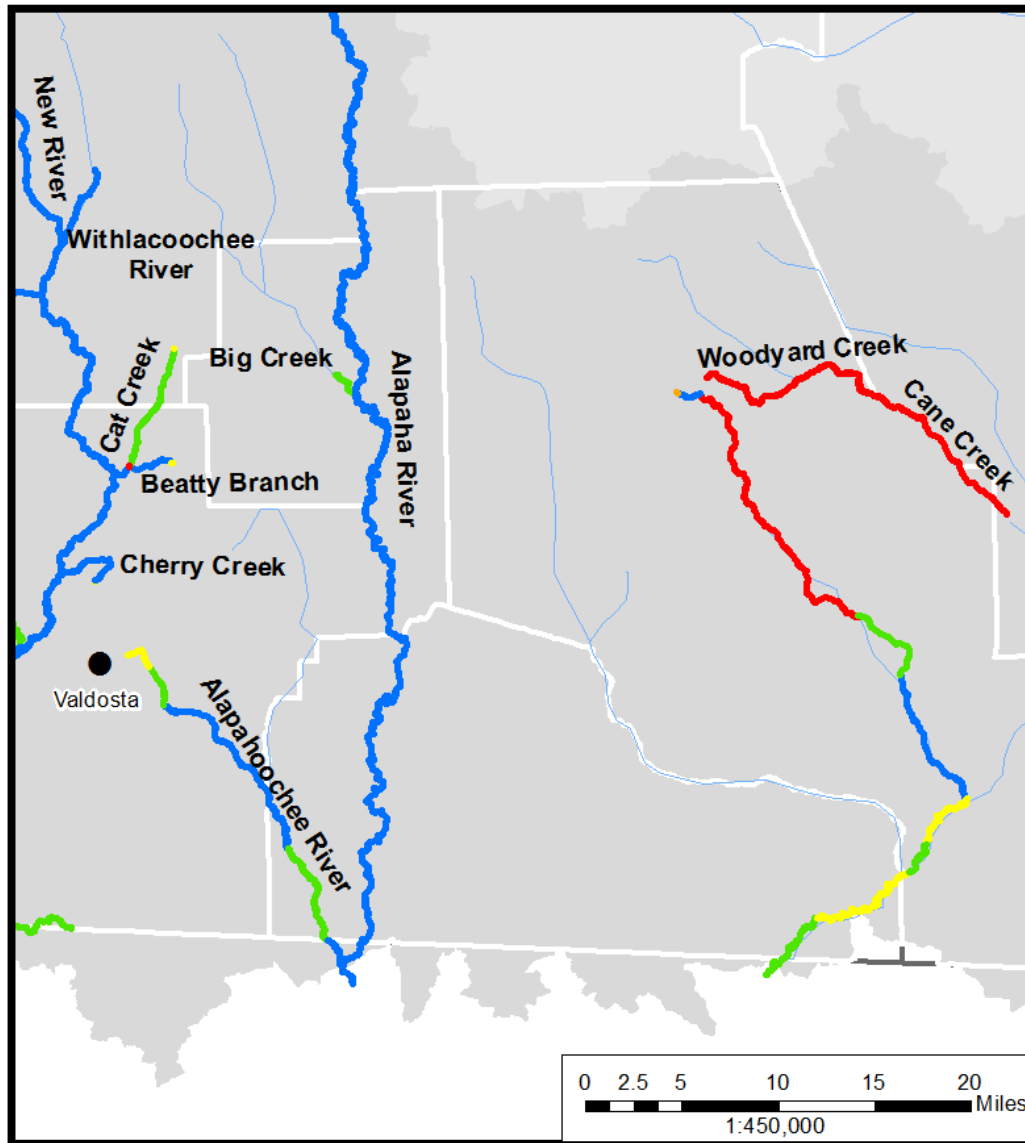
Legend

Available Assimilative Capacity

- Very Good ≥ 1 mg/L DO available
- Good 0.5 mg/L to < 1 mg/L DO available
- Moderate 0.2 mg/L to < 0.5 mg/L DO available
- Limited > 0 mg/L to < 0.2 mg/L DO available
- At Assimilative Capacity 0 mg/L DO available
- None or Exceeded < 0.0 mg/L DO available
- Unmodeled Lakes and Streams



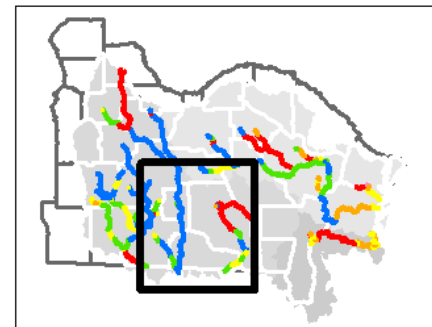
SUWANNEE GA DOSAG MODEL RESULTS



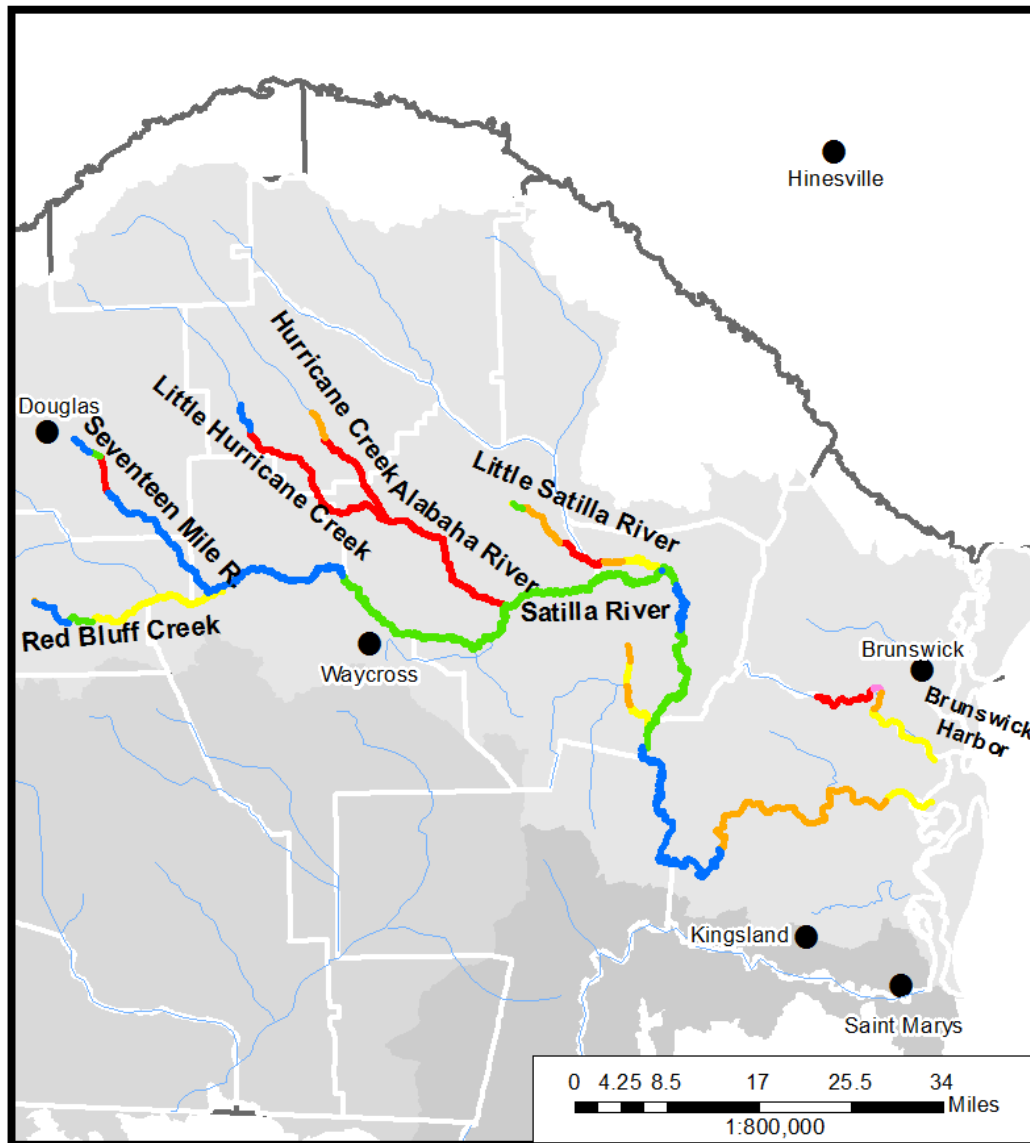
Legend

Available Assimilative Capacity

- Very Good ≥ 1 mg/L DO available
- Good 0.5 mg/L to < 1 mg/L DO available
- Moderate 0.2 mg/L to < 0.5 mg/L DO available
- Limited > 0 mg/L to < 0.2 mg/L DO available
- At Assimilative Capacity 0 mg/L DO available
- None or Exceeded < 0.0 mg/L DO available
- Unmodeled Lakes and Streams



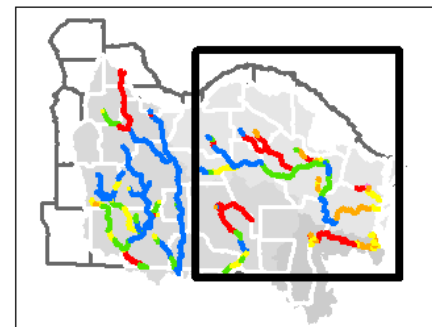
SATILLA GA DOSAG AND GA ESTUARY MODEL RESULTS



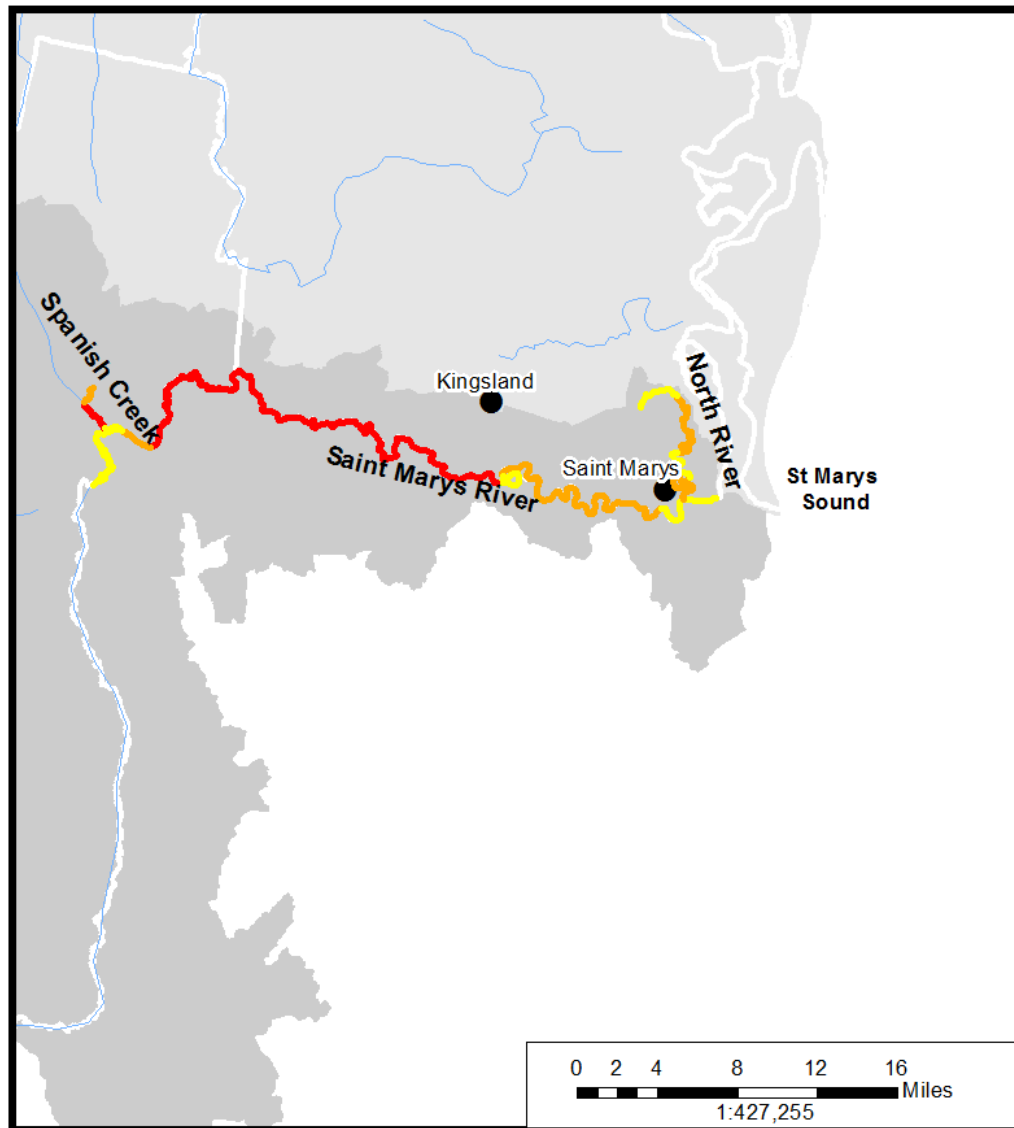
Legend

Available Assimilative Capacity

- Very Good ≥ 1 mg/L DO available
- Good 0.5 mg/L to < 1 mg/L DO available
- Moderate 0.2 mg/L to < 0.5 mg/L DO available
- Limited > 0 mg/L to < 0.2 mg/L DO available
- At Assimilative Capacity 0 mg/L DO available
- None or Exceeded < 0.0 mg/L DO available
- Unmodeled Lakes and Streams



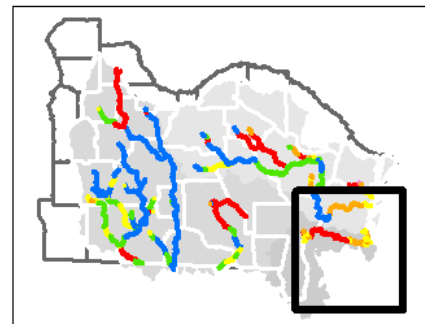
ST MARYS GA DOSAG AND GA ESTUARY MODEL RESULTS



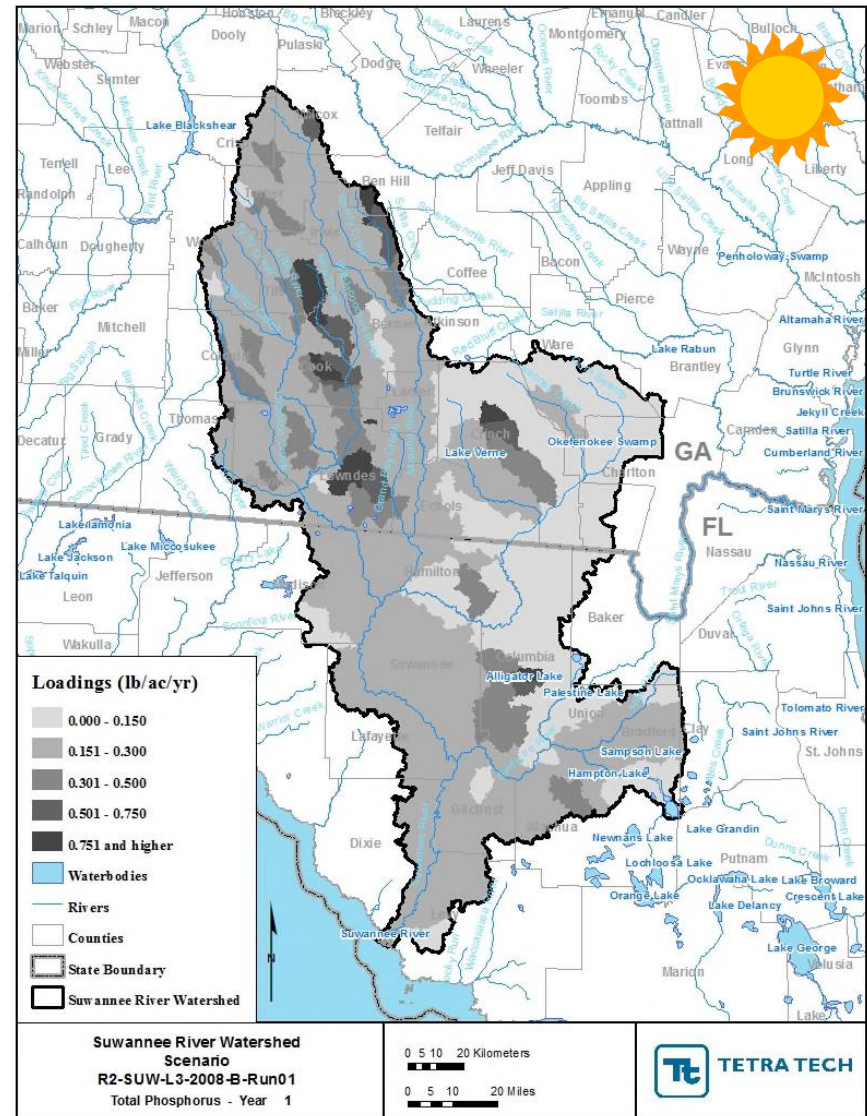
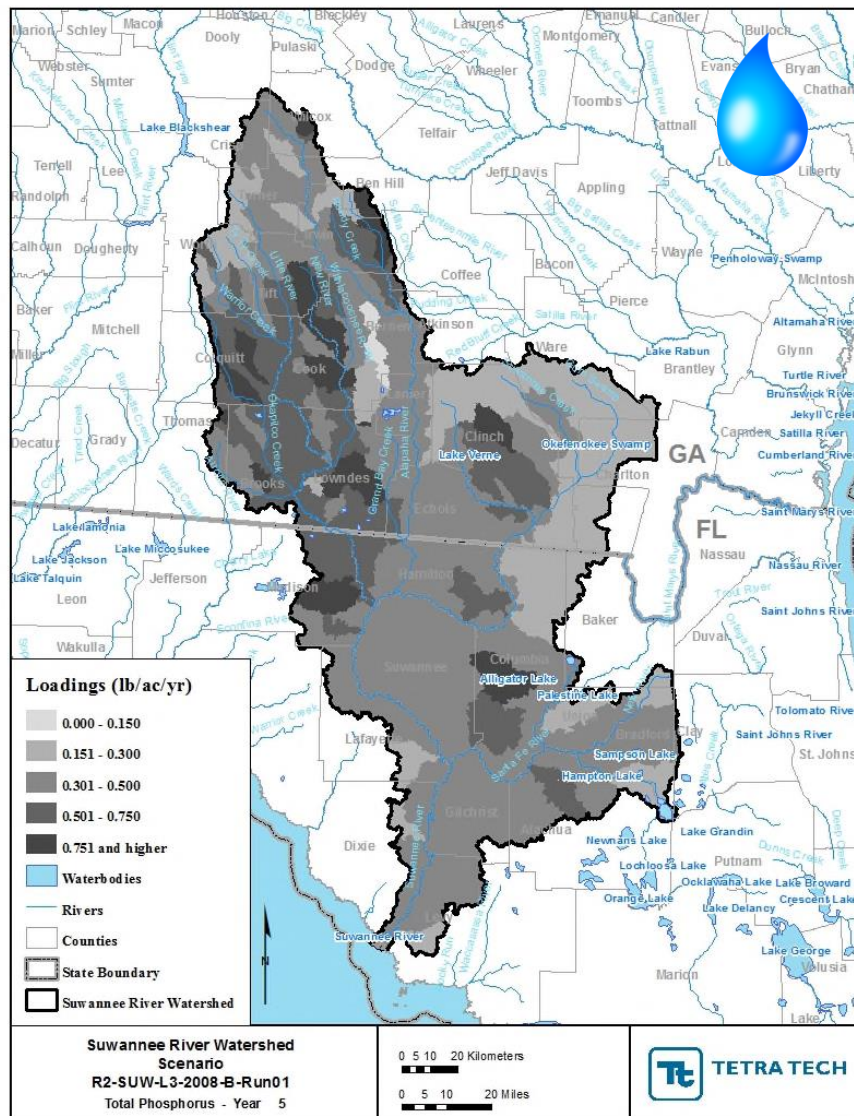
Legend

Available Assimilative Capacity

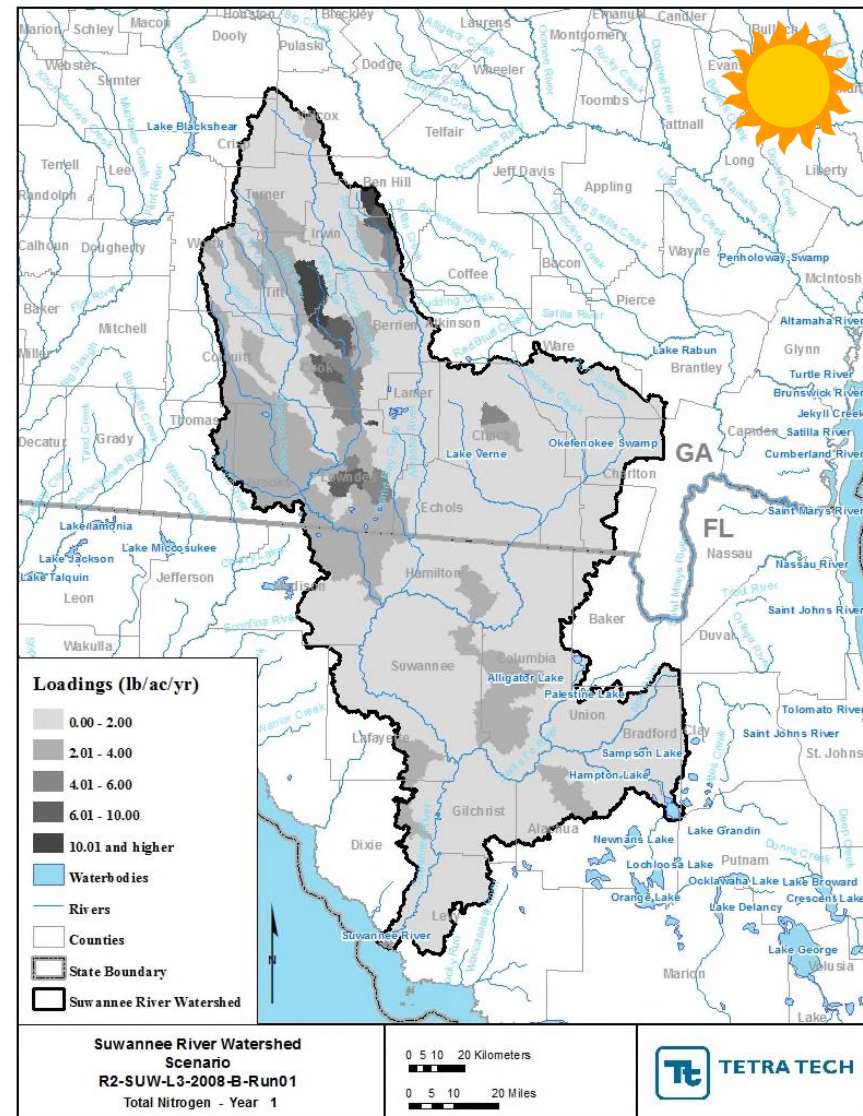
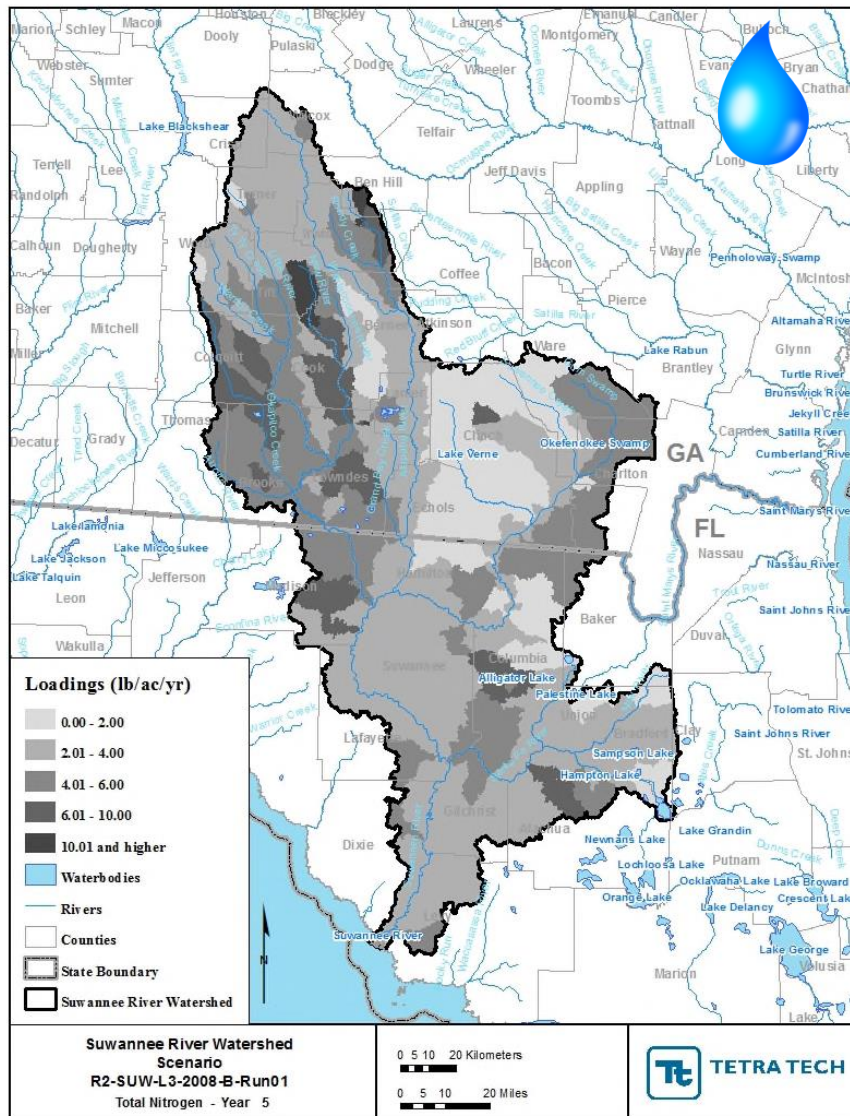
- ~ Very Good ≥ 1 mg/L DO available
- ~ Good 0.5 mg/L to < 1 mg/L DO available
- ~ Moderate 0.2 mg/L to < 0.5 mg/L DO available
- ~ Limited > 0 mg/L to < 0.2 mg/L DO available
- ~ At Assimilative Capacity 0 mg/L DO available
- ~ None or Exceeded < 0.0 mg/L DO available
- ~ Unmodeled Lakes and Streams



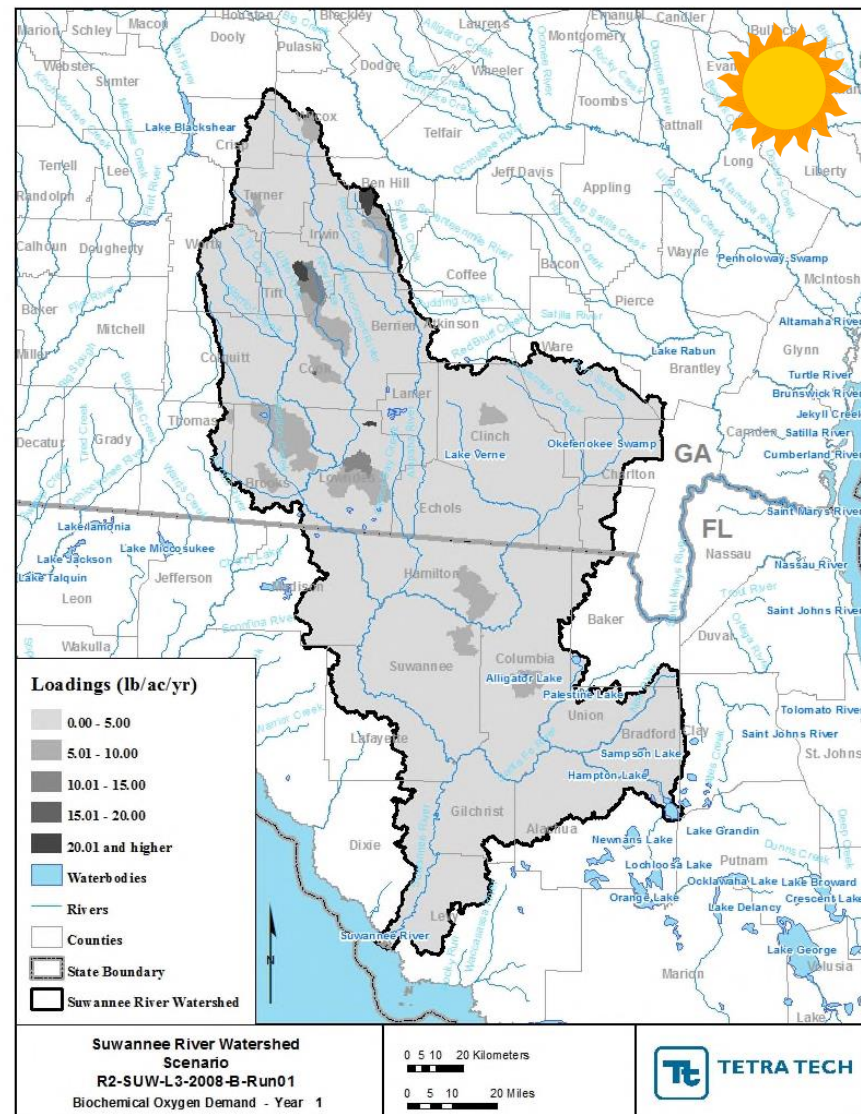
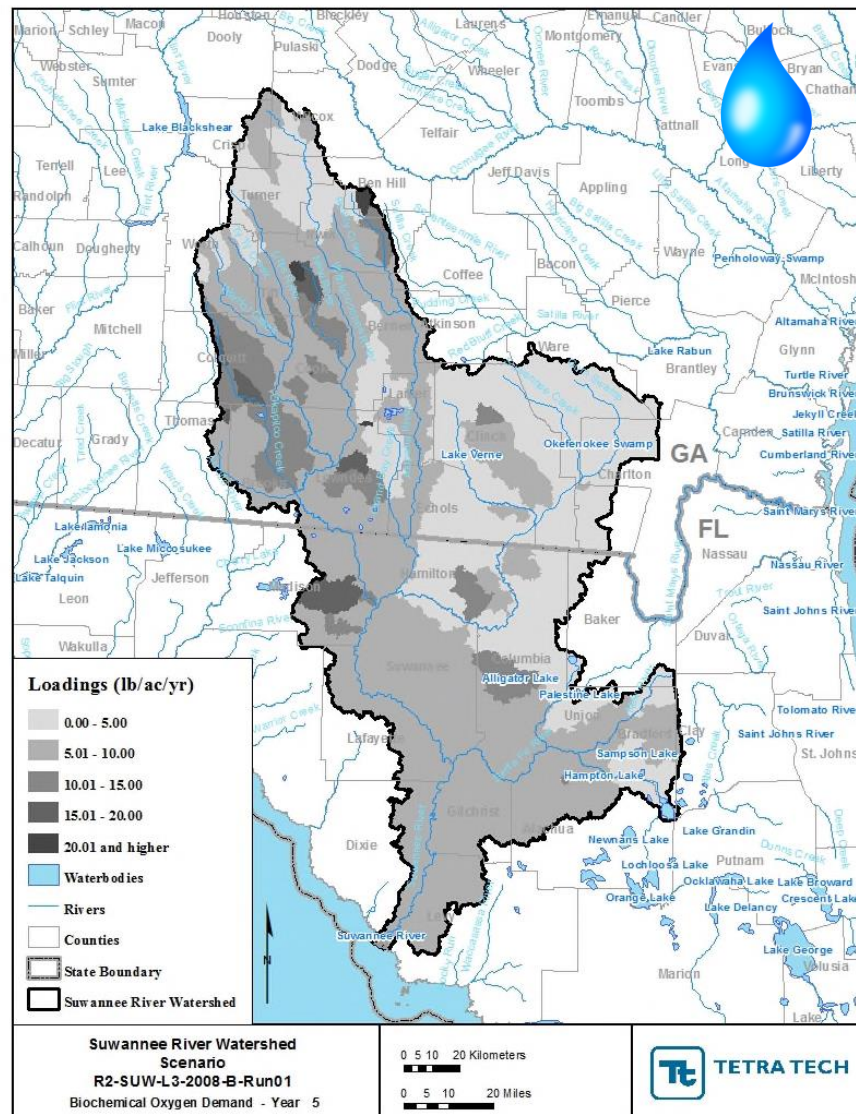
SUWANNEE TOTAL P HEAT MAPS

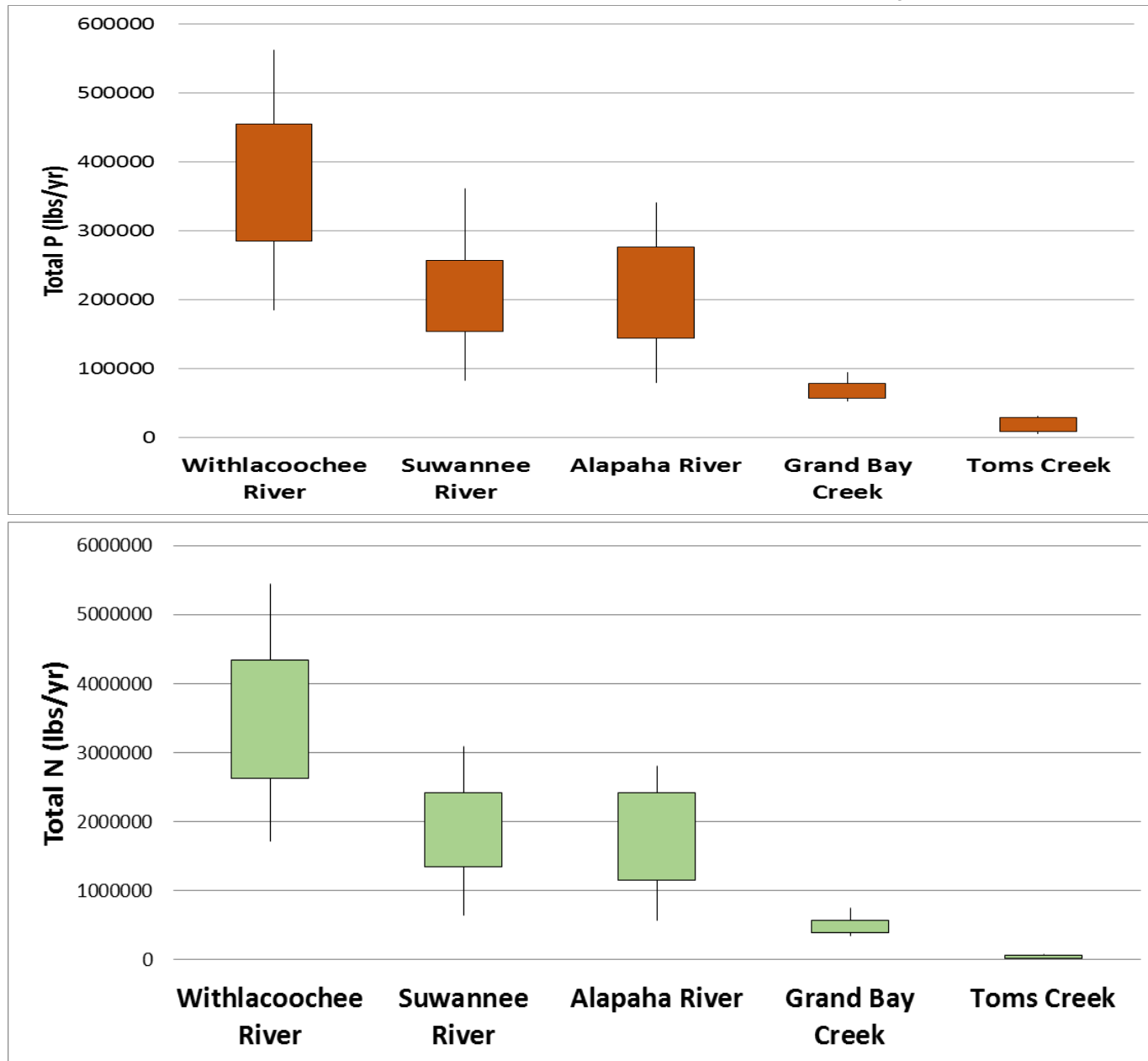


SUWANNEE TOTAL N HEAT MAPS

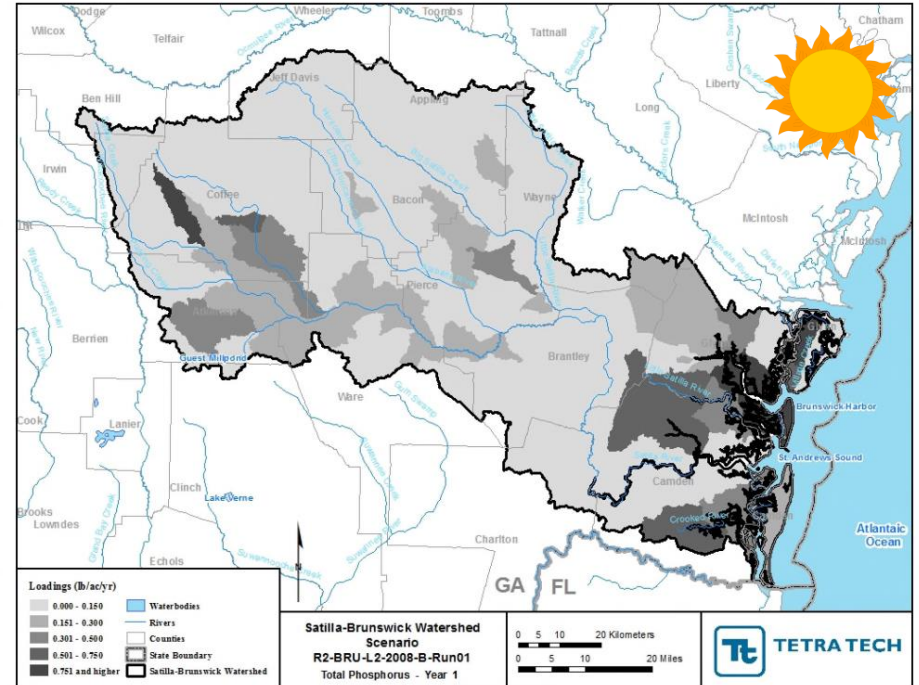
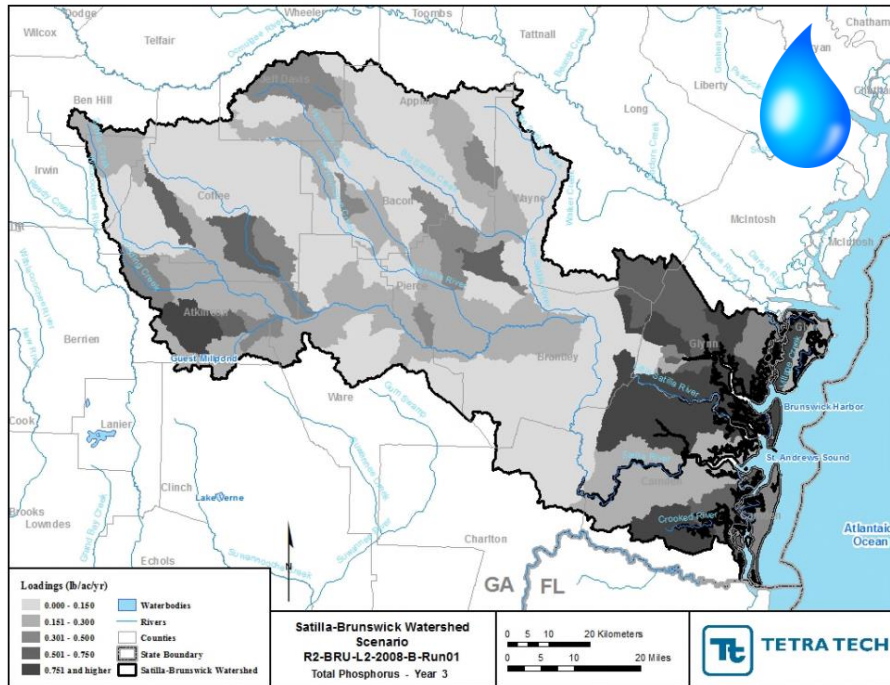


SUWANNEE BOD HEAT MAPS

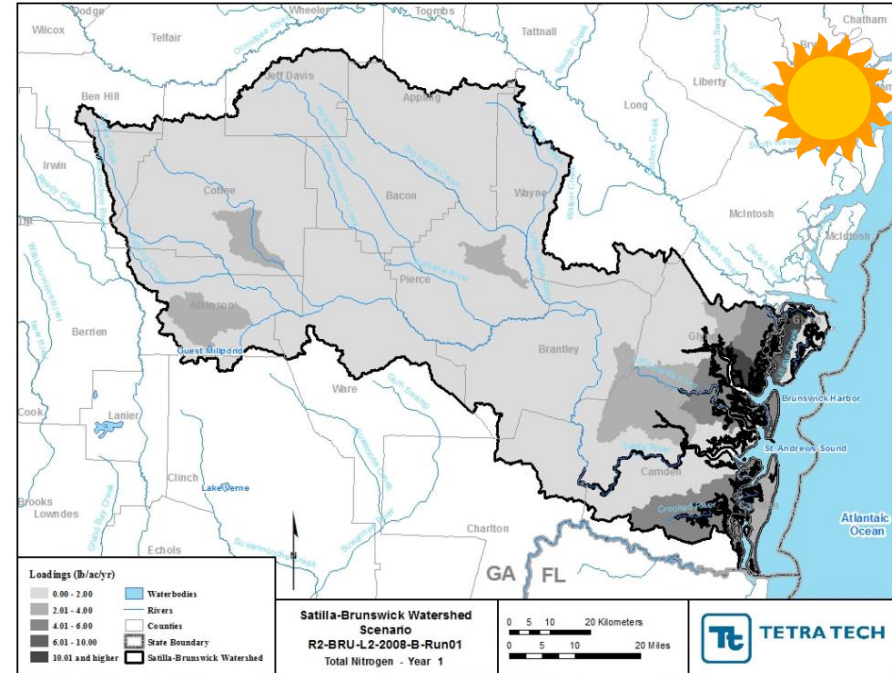
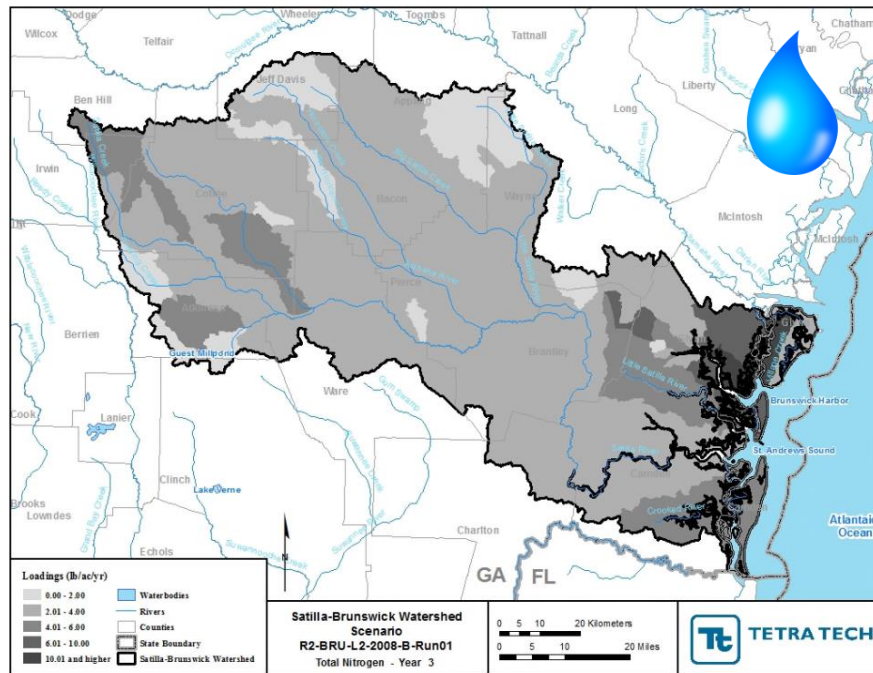


SUWANNEE STATELINE NUTRIENT LOADS (lbs/yr)

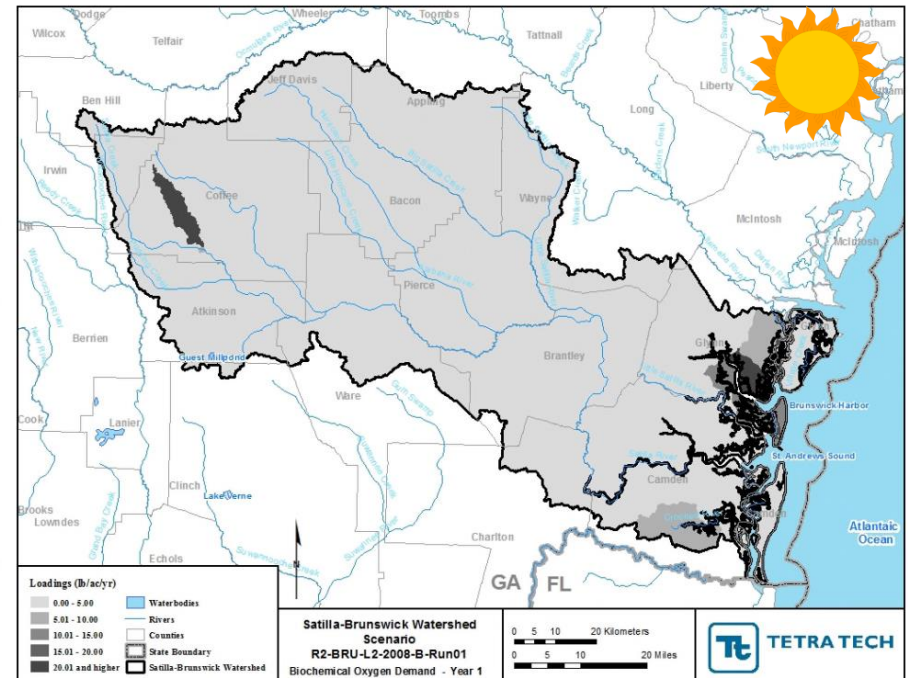
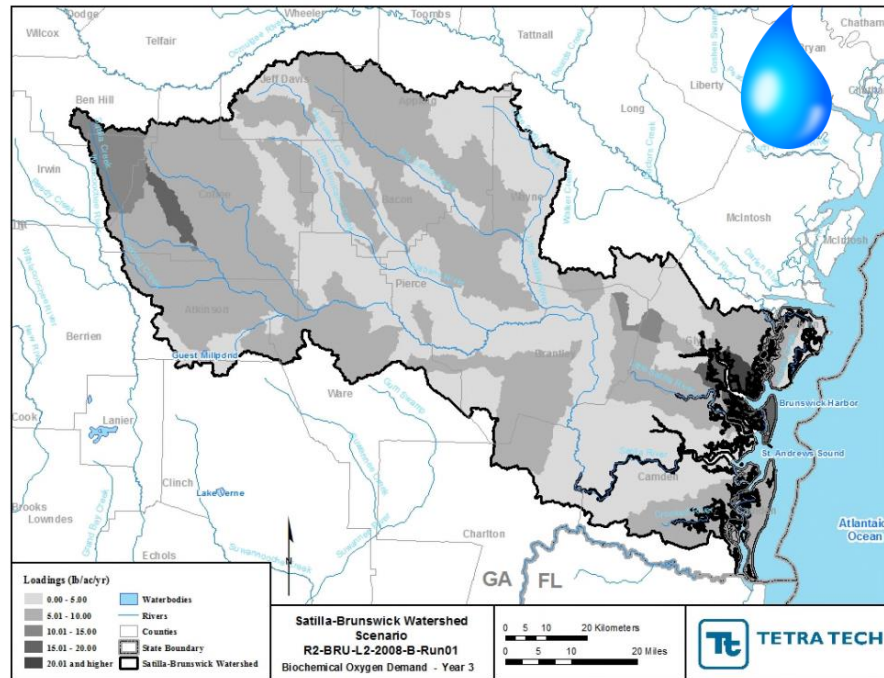
SATILLA TOTAL P HEAT MAPS



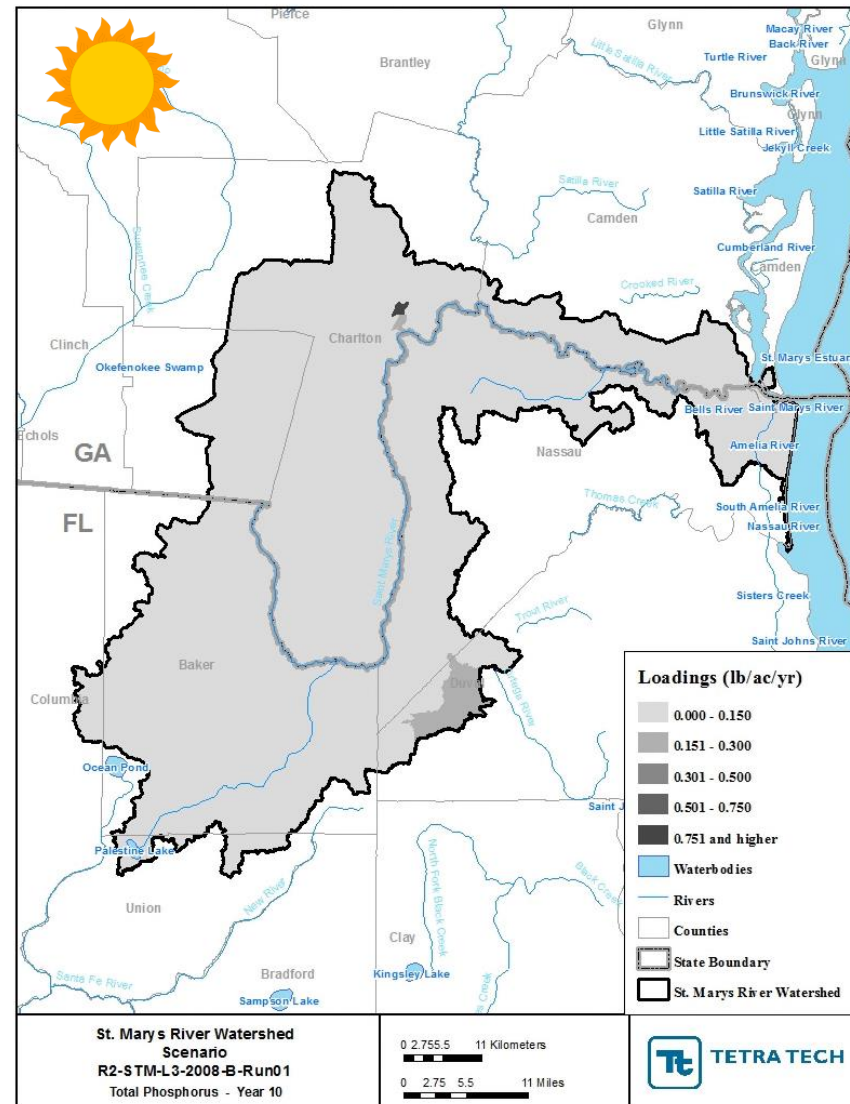
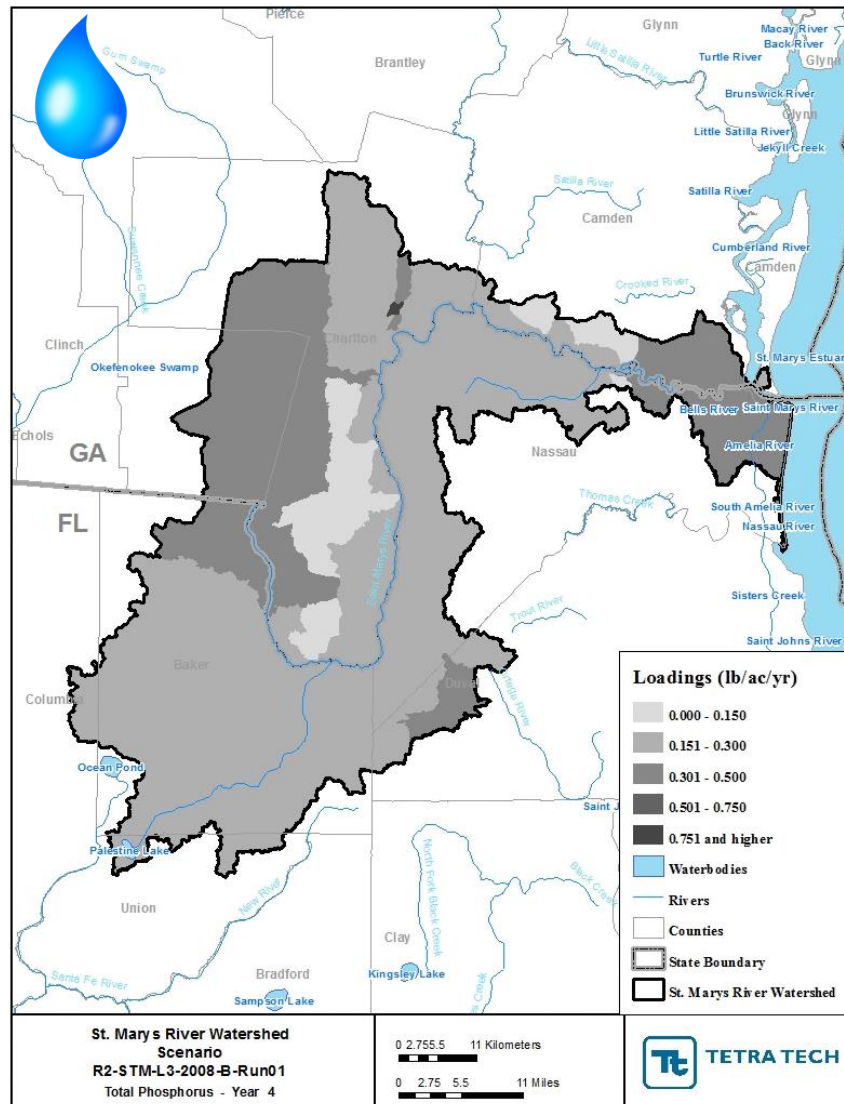
SATILLA TOTAL N HEAT MAPS



SATILLA BOD HEAT MAPS

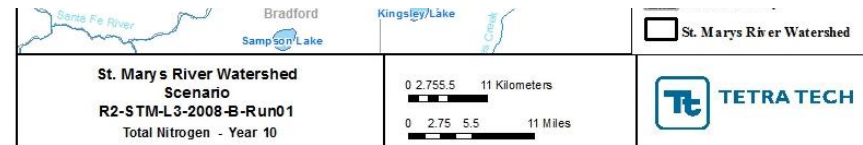
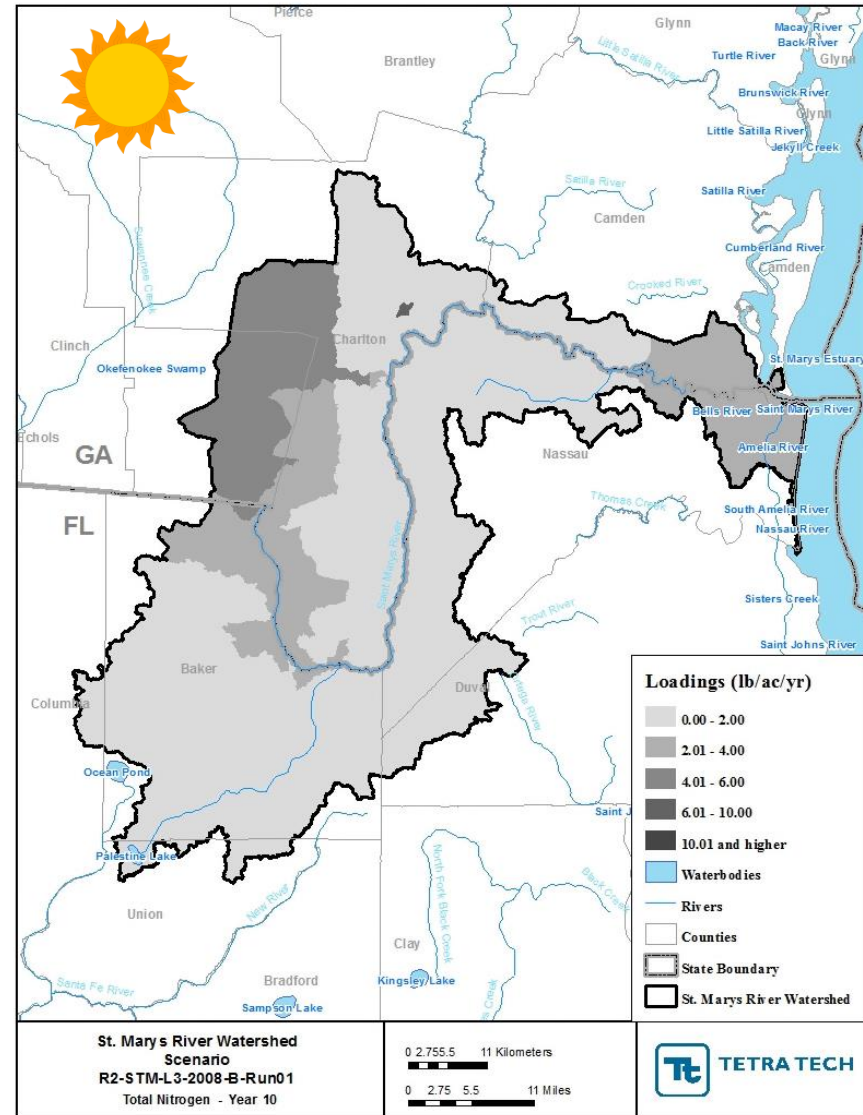
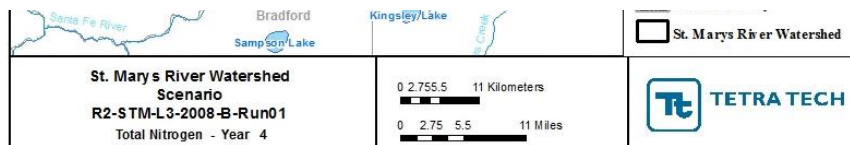
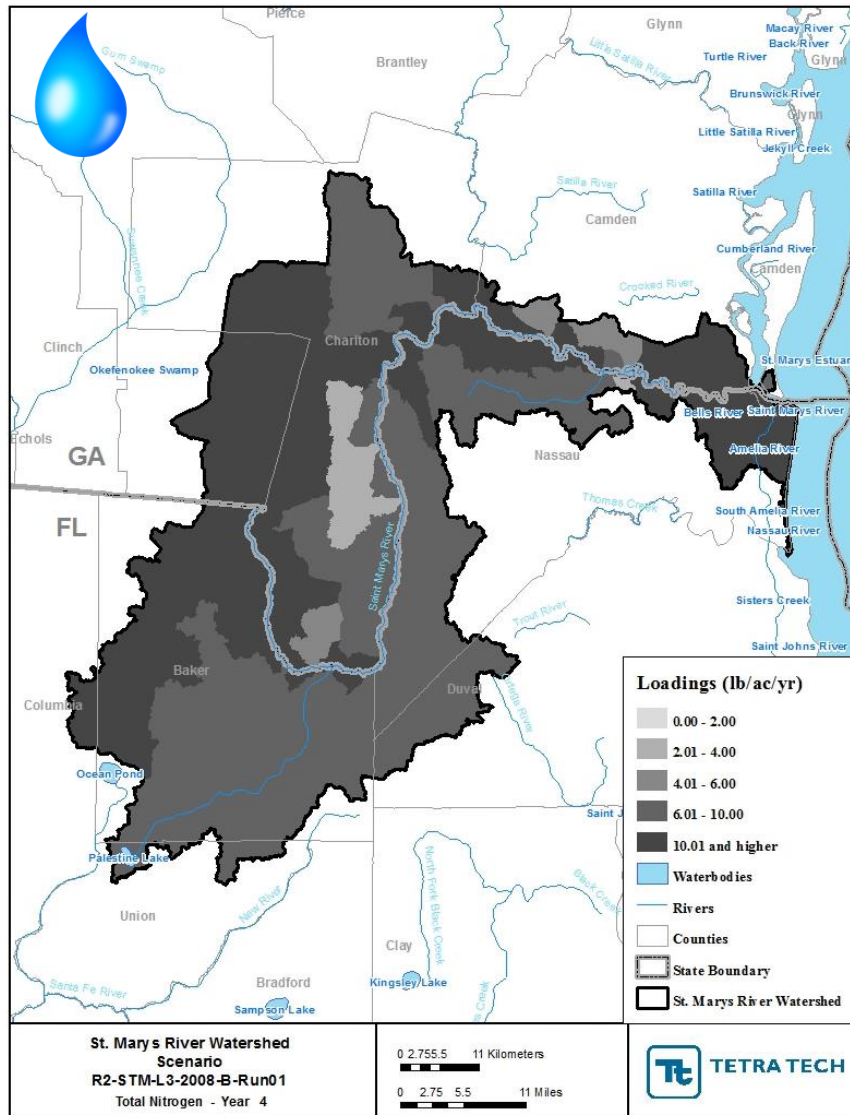


ST MARYS TOTAL P HEAT MAPS

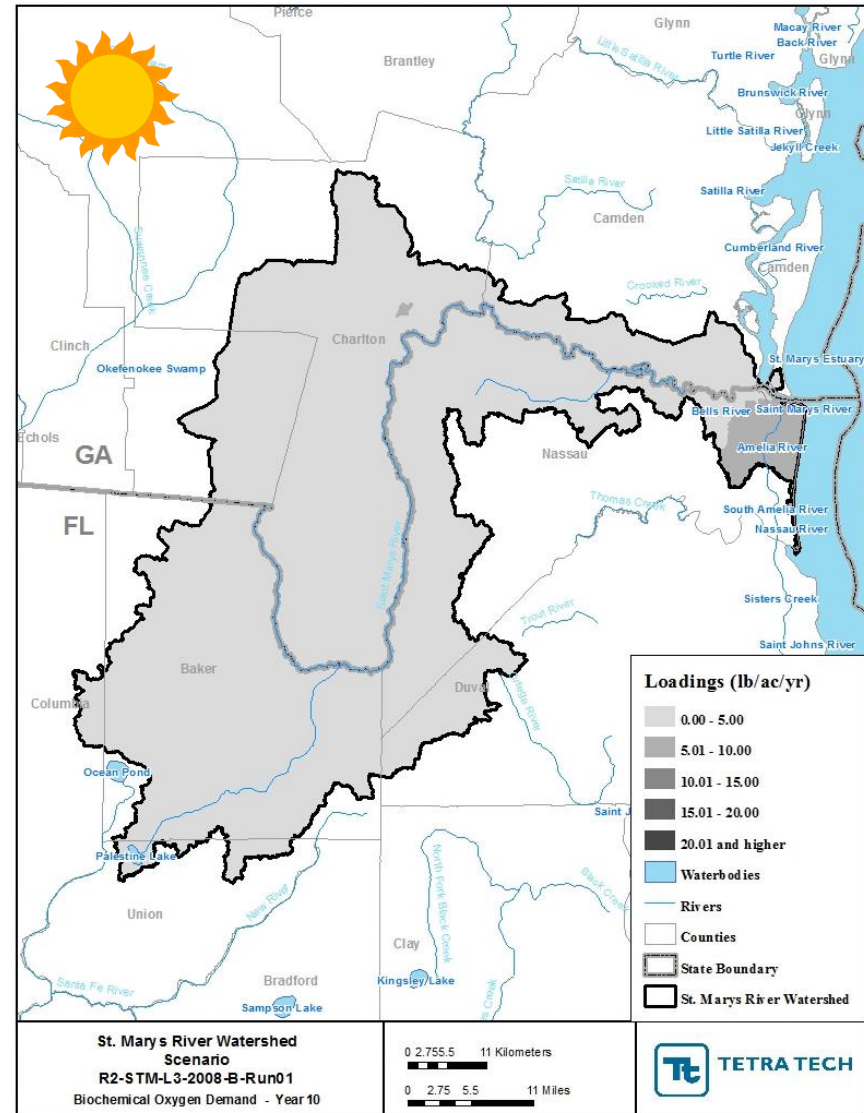
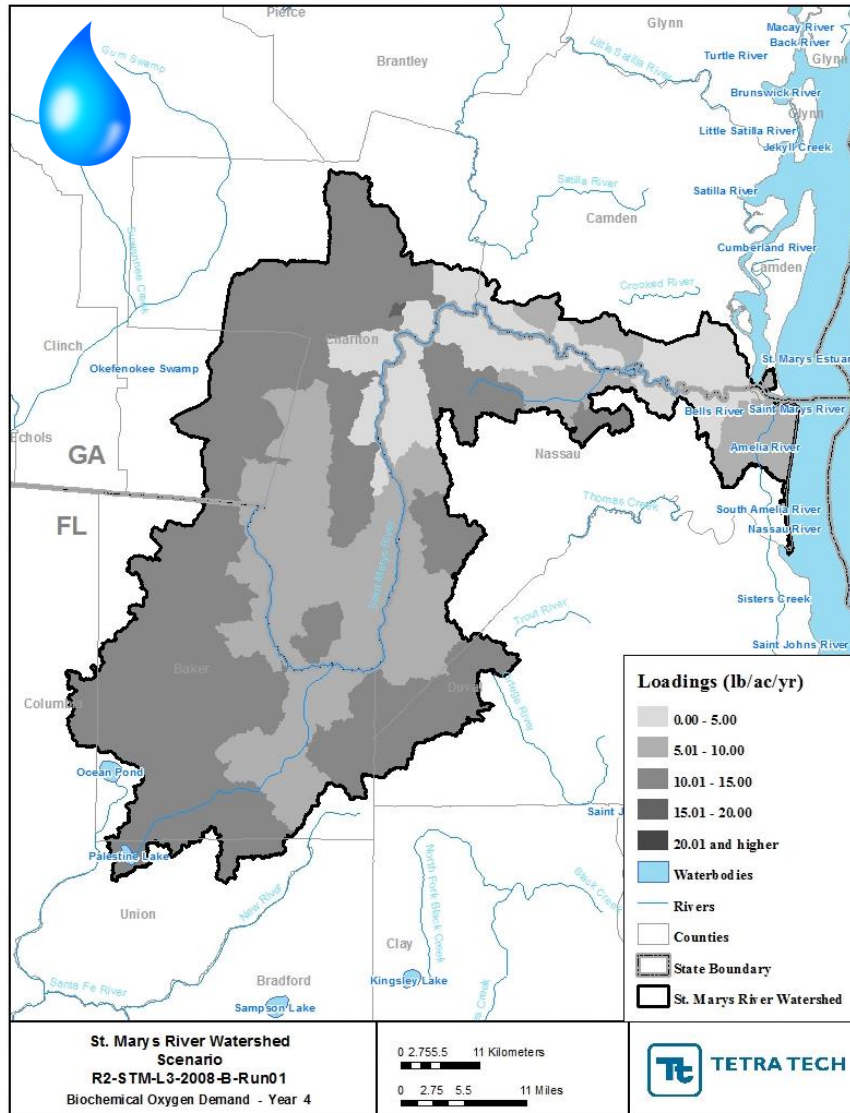


6/23/16

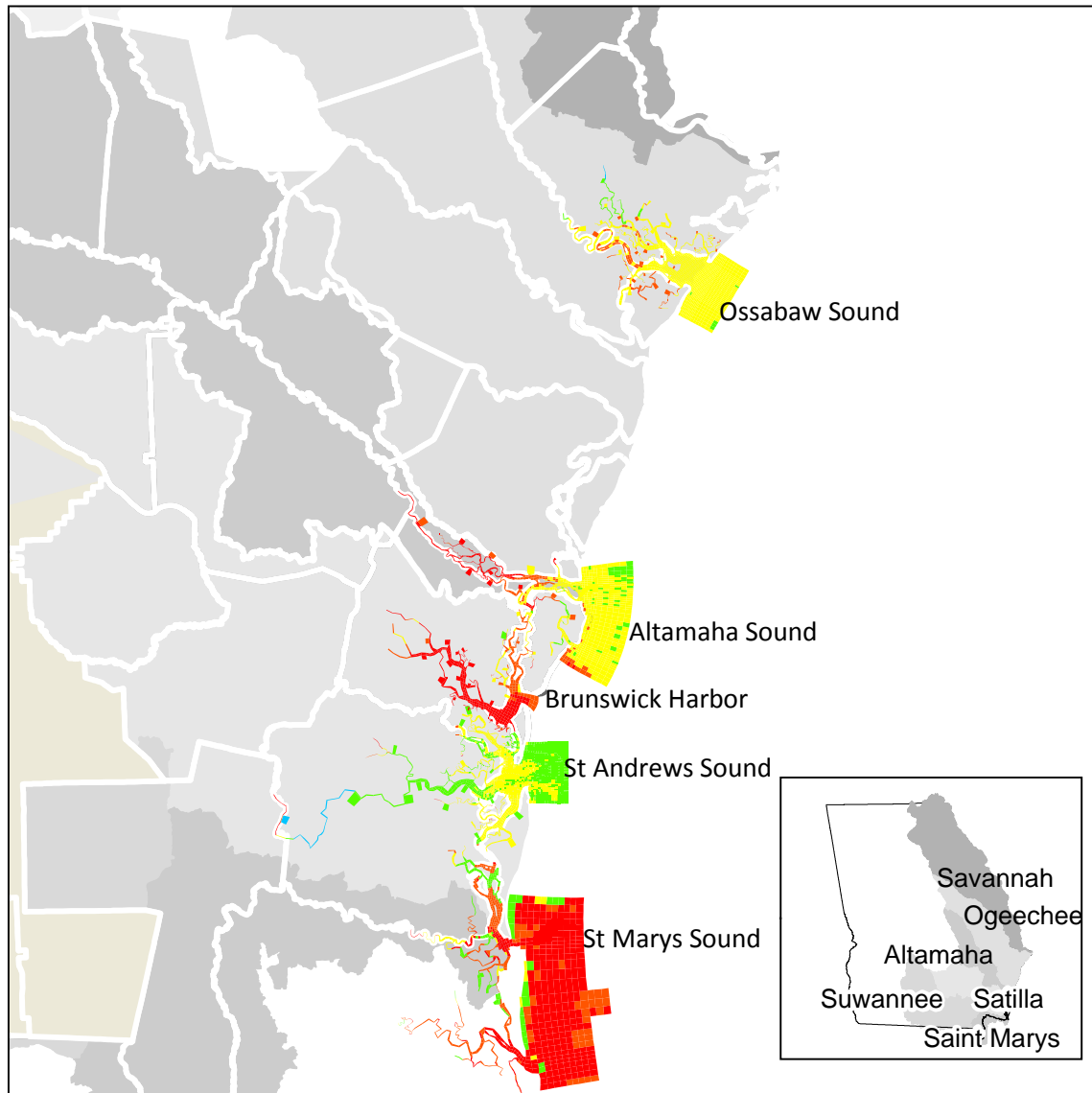
ST MARYS TOTAL N HEAT MAPS



ST MARYS BOD HEAT MAPS



COASTAL GEORGIA ESTUARY MODEL RESULTS



Legend

Available Assimilative Capacity

- ~ Very Good ≥ 1 mg/L DO available
- ~ Good 0.5 mg/L to < 1 mg/L DO available
- ~ Moderate 0.2 mg/L to < 0.5 mg/L DO available
- ~ Limited > 0 mg/L to < 0.2 mg/L DO available
- ~ At Assimilative Capacity 0 mg/L DO available
- ~ None or Exceeded < 0.0 mg/L DO available
- ~ Unmodeled Lakes and Streams

ESTUARY NUTRIENT LOADS (lbs/yr)