

**Joint Council Meeting #1 – Eastern Councils
Thursday, June 23, 2016**

**Dubose Porter Center
Oconee Fall Line Technical College
560 Pinehill Road
Dublin, GA 31021**

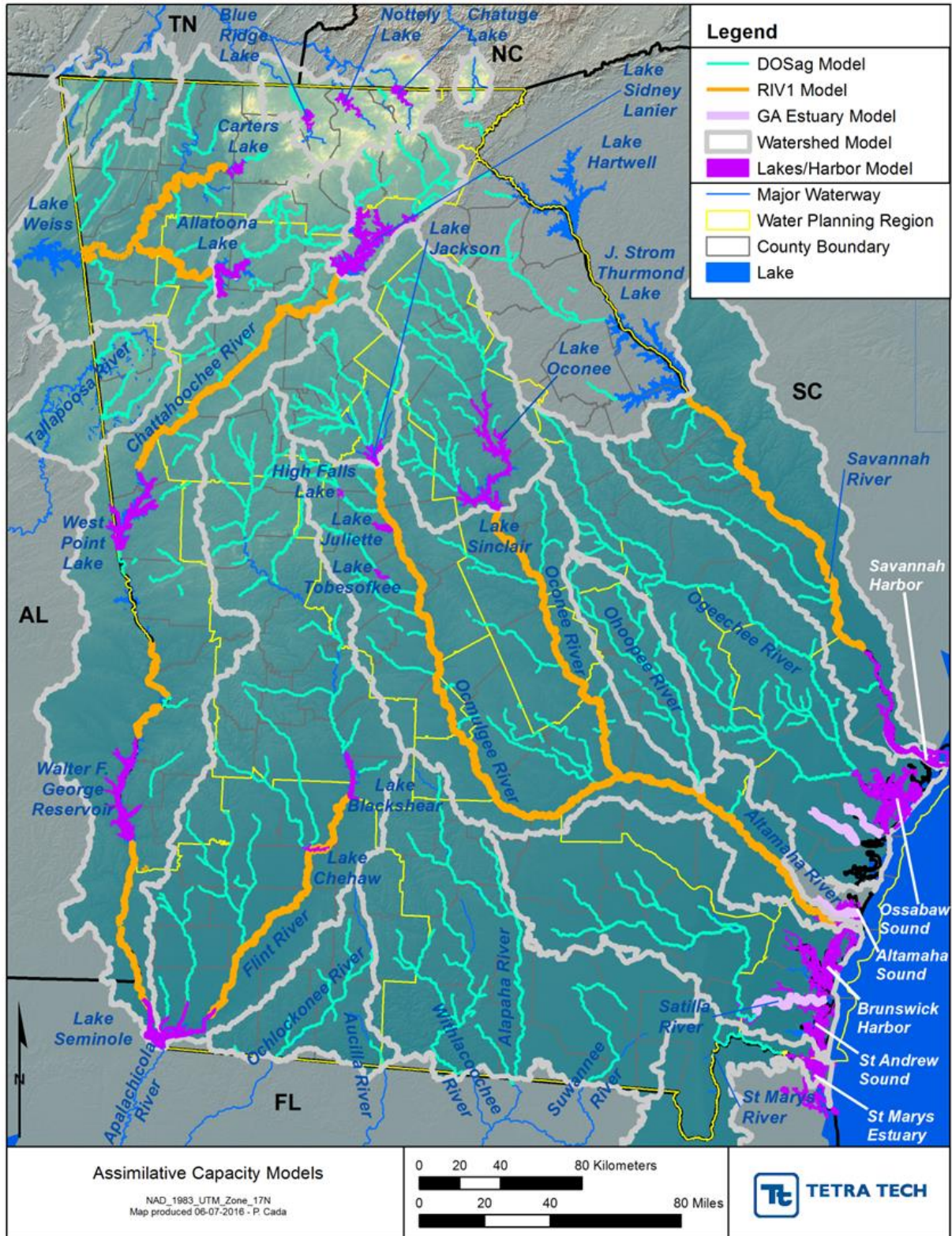


Joint Council Breakout Sessions: Resource Assessments and Joint Topics

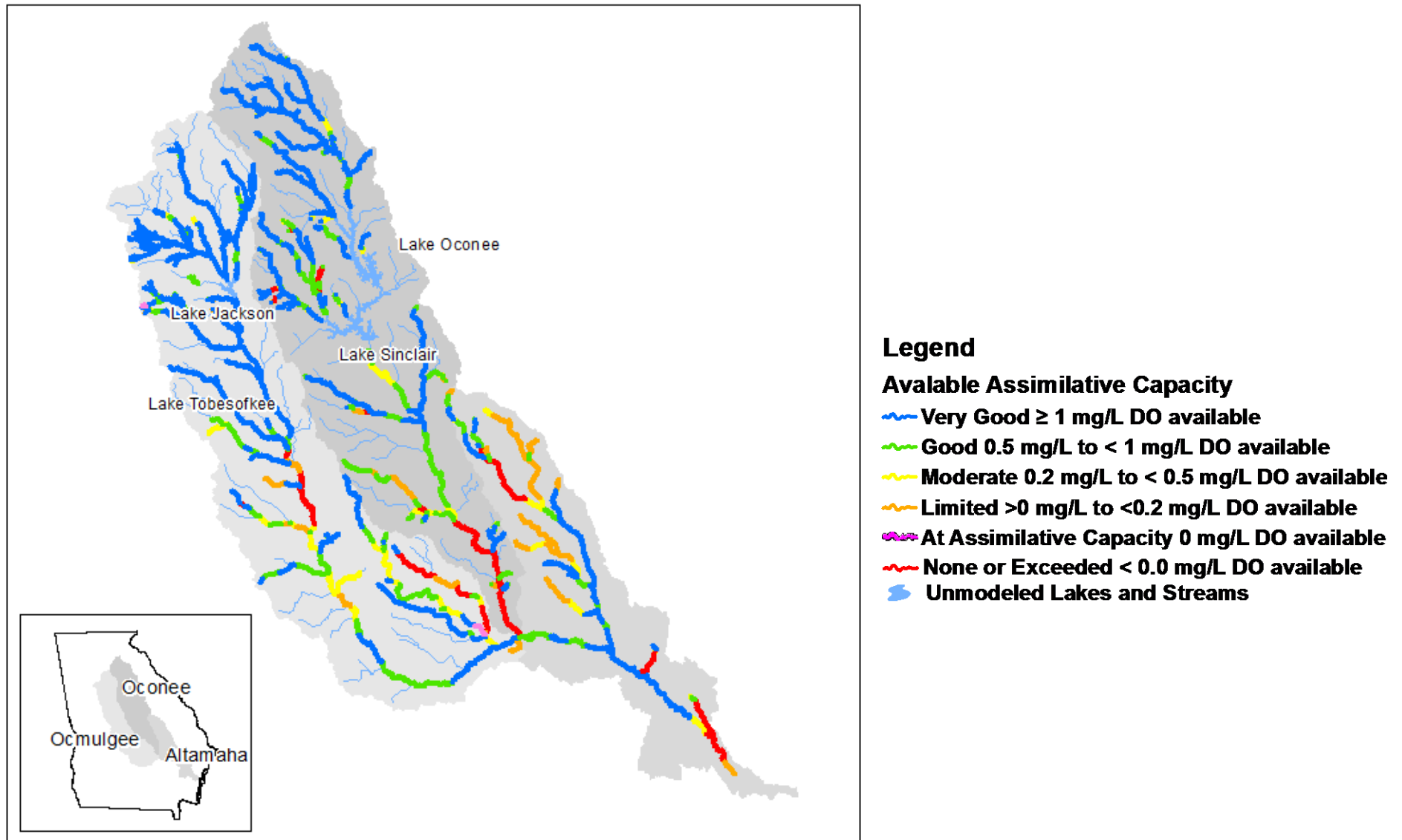
Session A Handouts

Altamaha, Middle Ocmulgee, and Upper Oconee Councils + members of Suwannee- Satilla Council

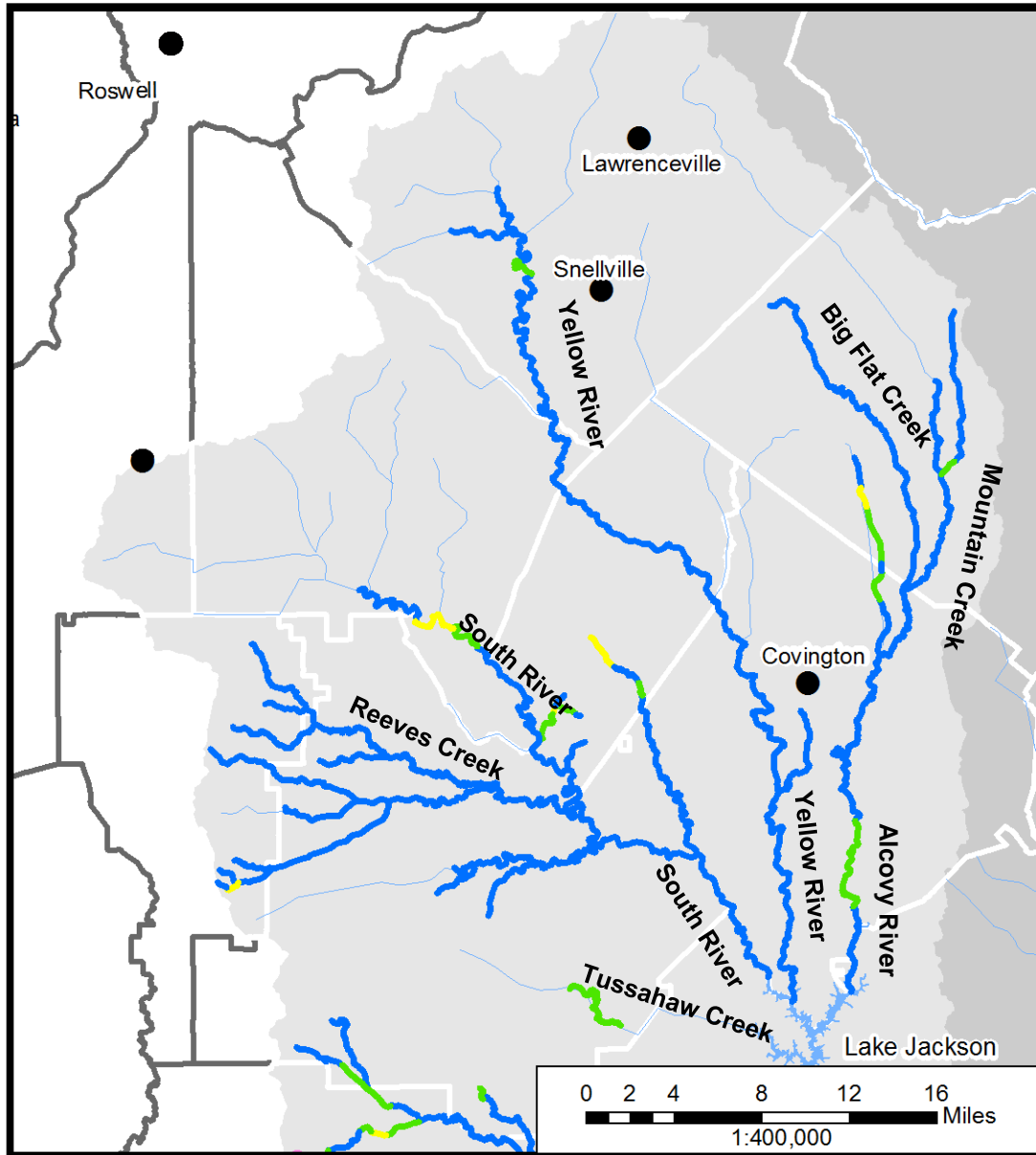
2016 CURRENT ASSIMILATIVE CAPACITY ASSESSMENT



OCONEE, OCMULGEE, AND ALTAMAHA GA DOSAG AND GA ESTUARY MODEL RESULTS



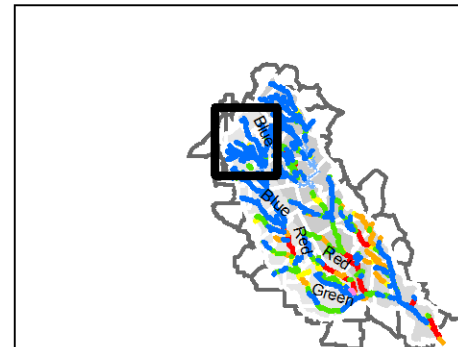
OCMULGEE GA DOSAG MODEL RESULTS



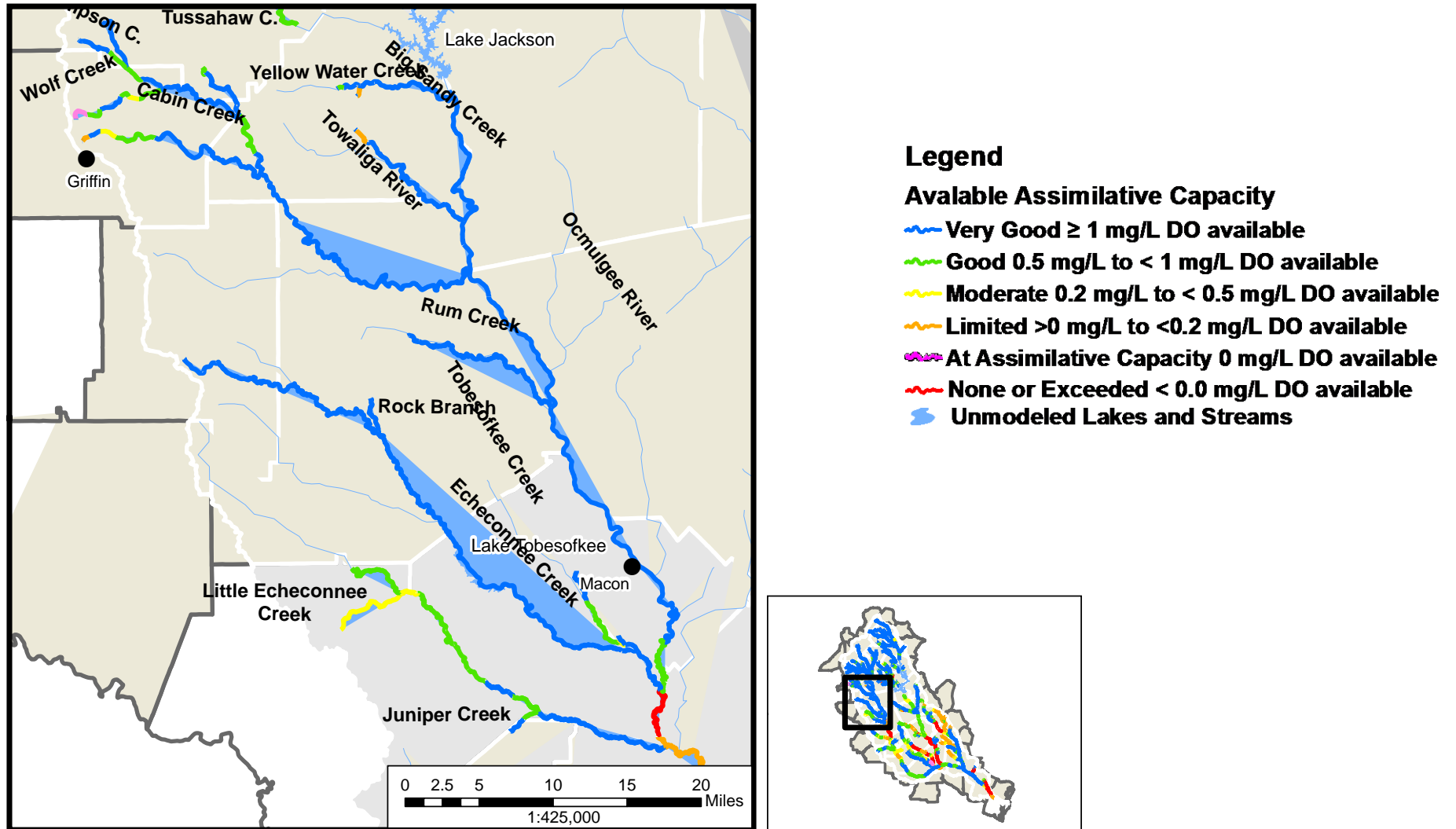
Legend

Available Assimilative Capacity

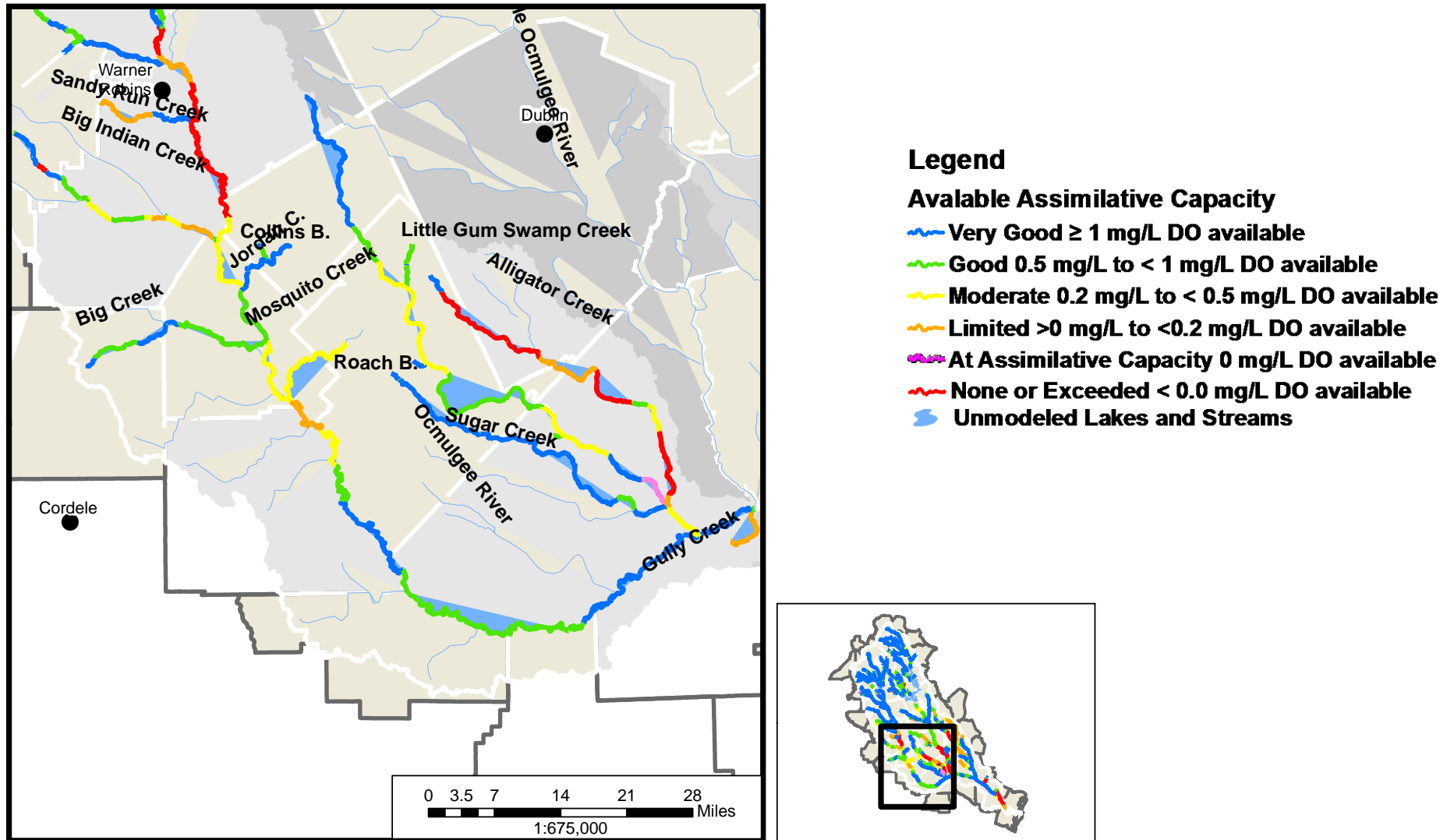
- Very Good ≥ 1 mg/L DO available
- Good 0.5 mg/L to < 1 mg/L DO available
- Moderate 0.2 mg/L to < 0.5 mg/L DO available
- Limited > 0 mg/L to < 0.2 mg/L DO available
- At Assimilative Capacity 0 mg/L DO available
- None or Exceeded < 0.0 mg/L DO available
- Unmodeled Lakes and Streams



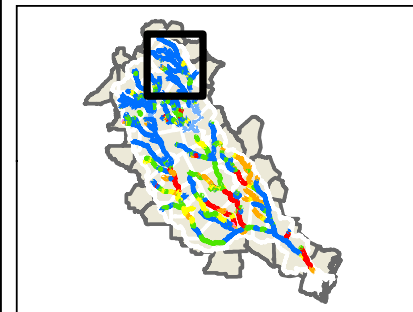
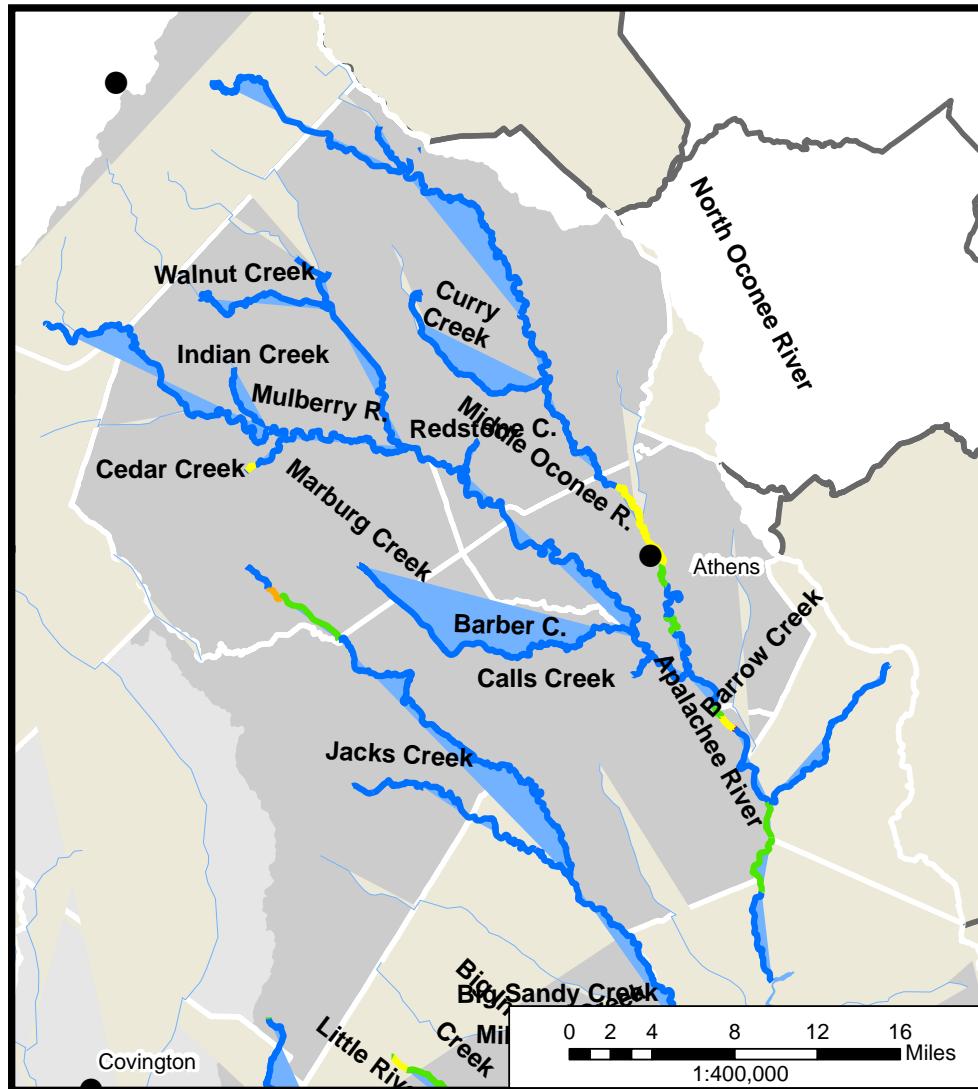
OCMULGEE GA DOSAG MODEL RESULTS

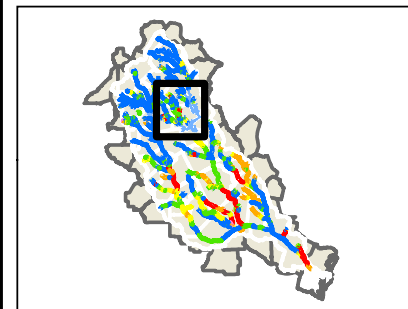


OCMULGEE GA DOSAG MODEL RESULTS

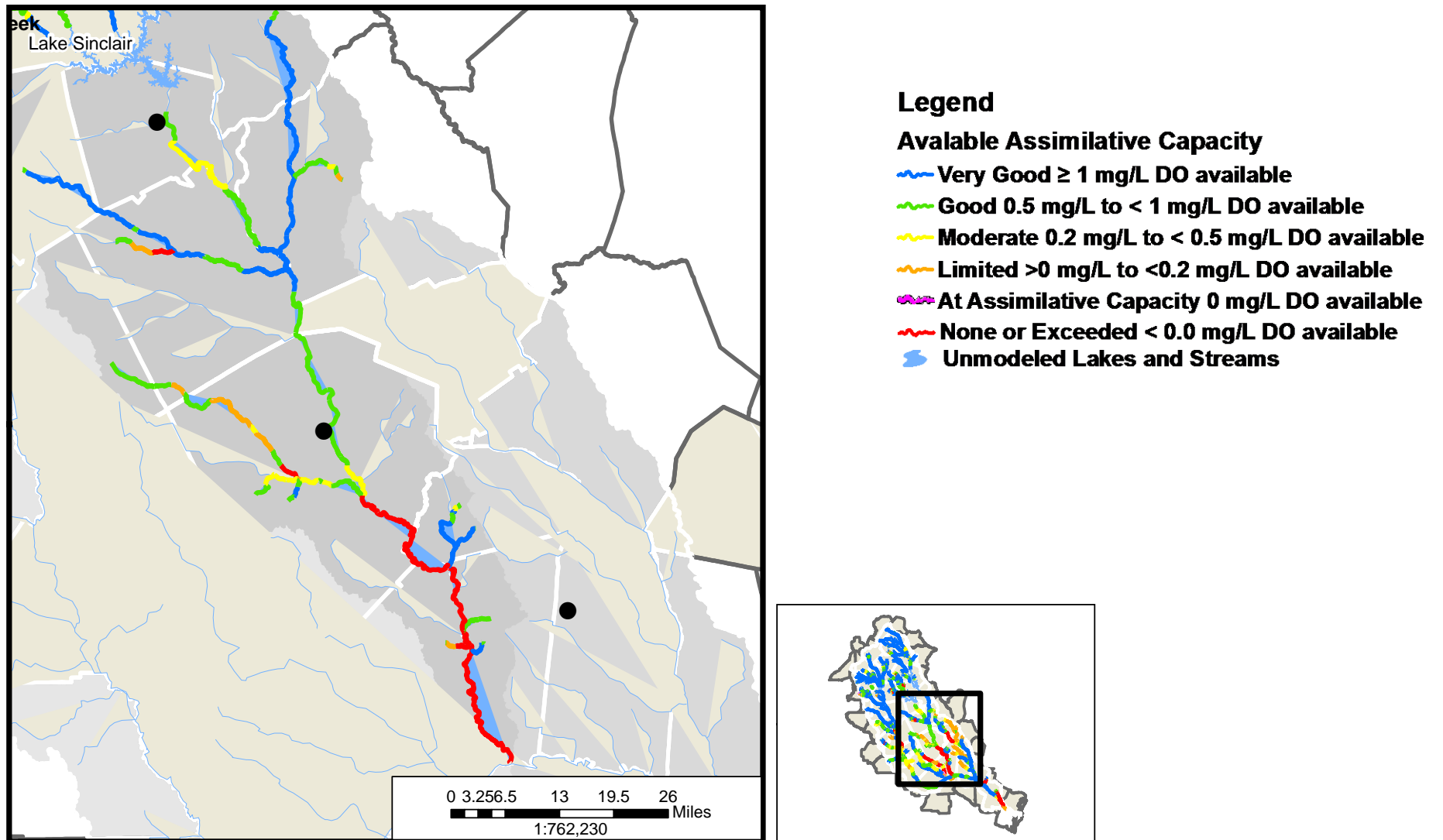


OCONEE GA DOSAG MODEL RESULTS

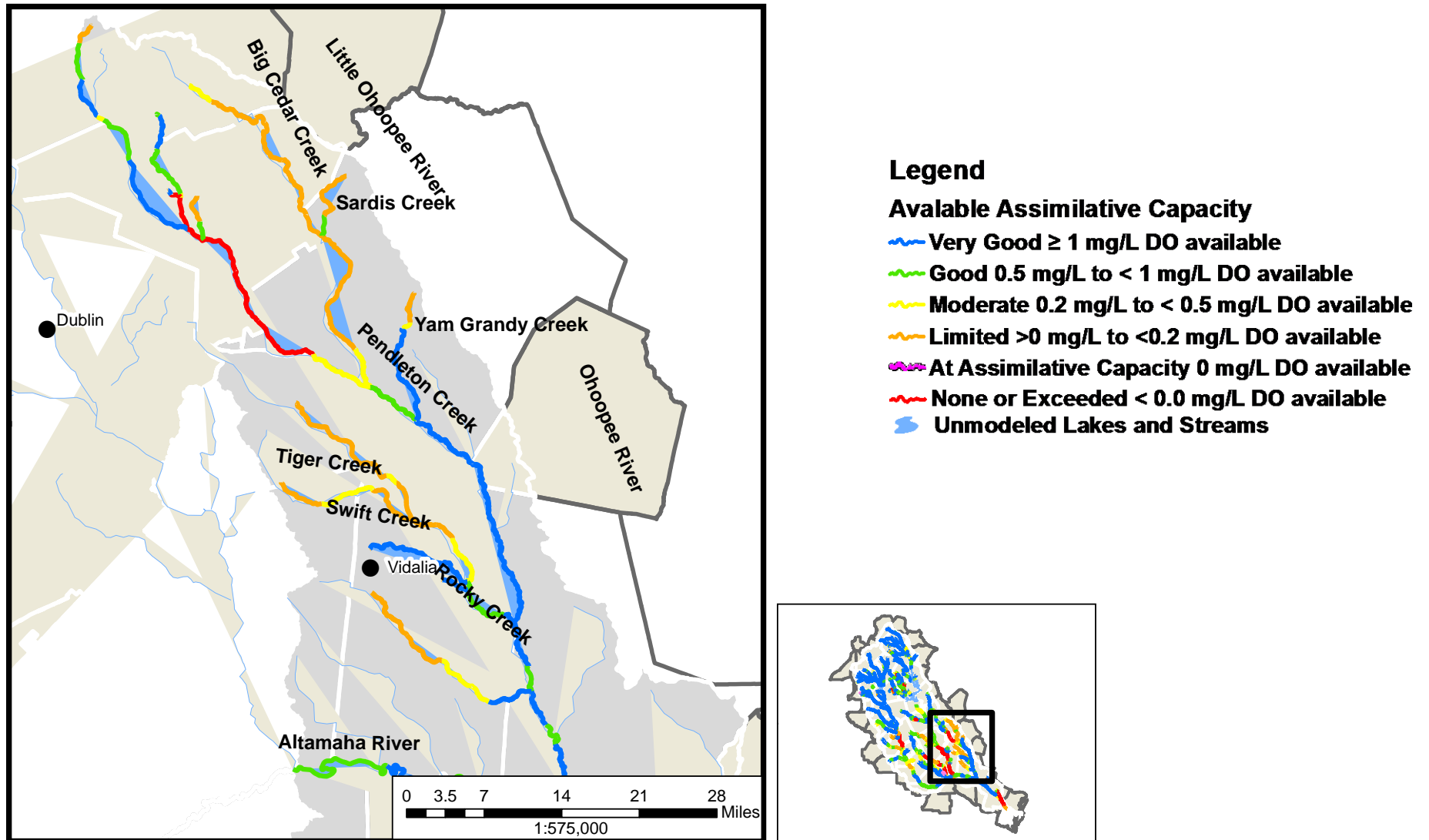




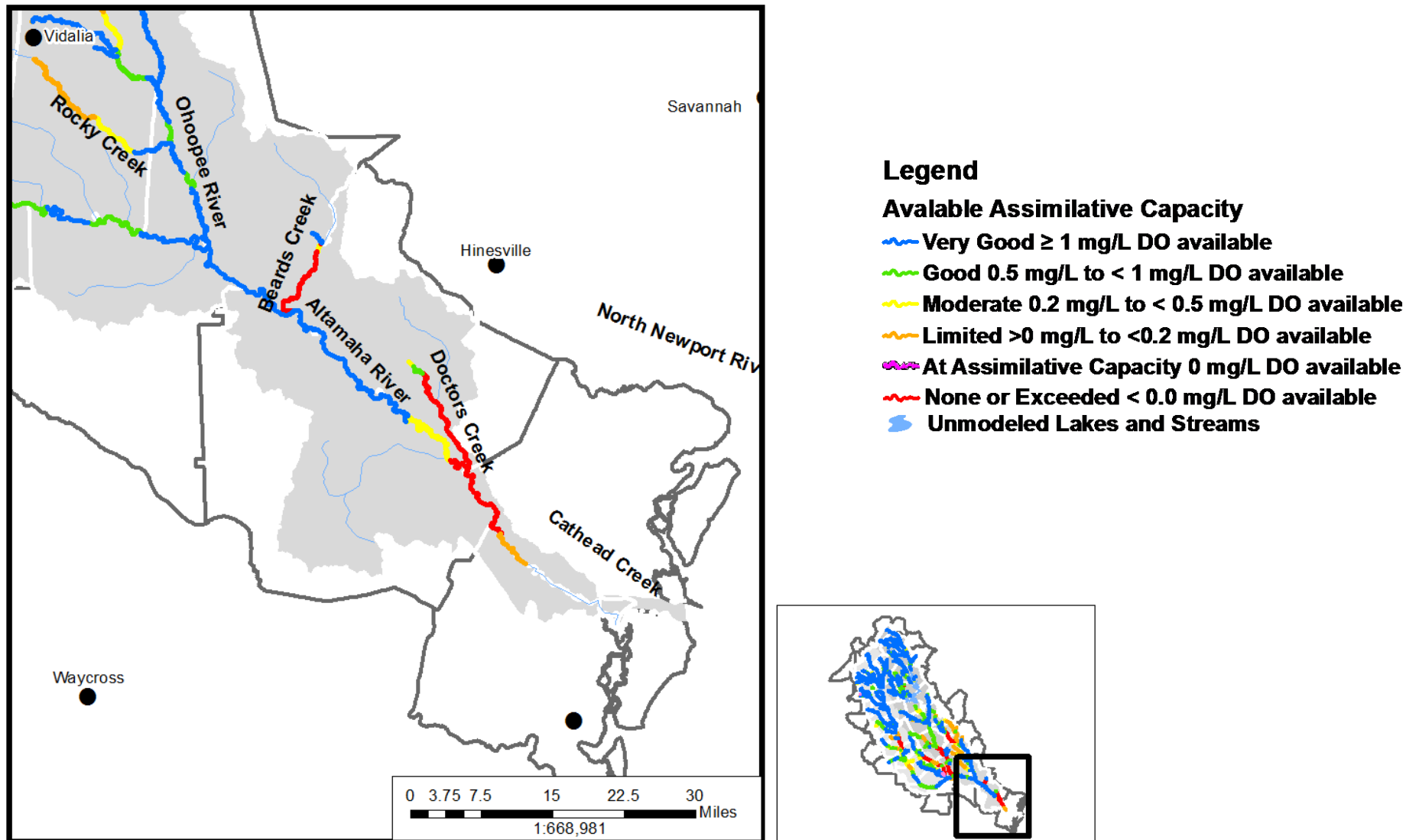
OCONEE GA DOSAG MODEL RESULTS



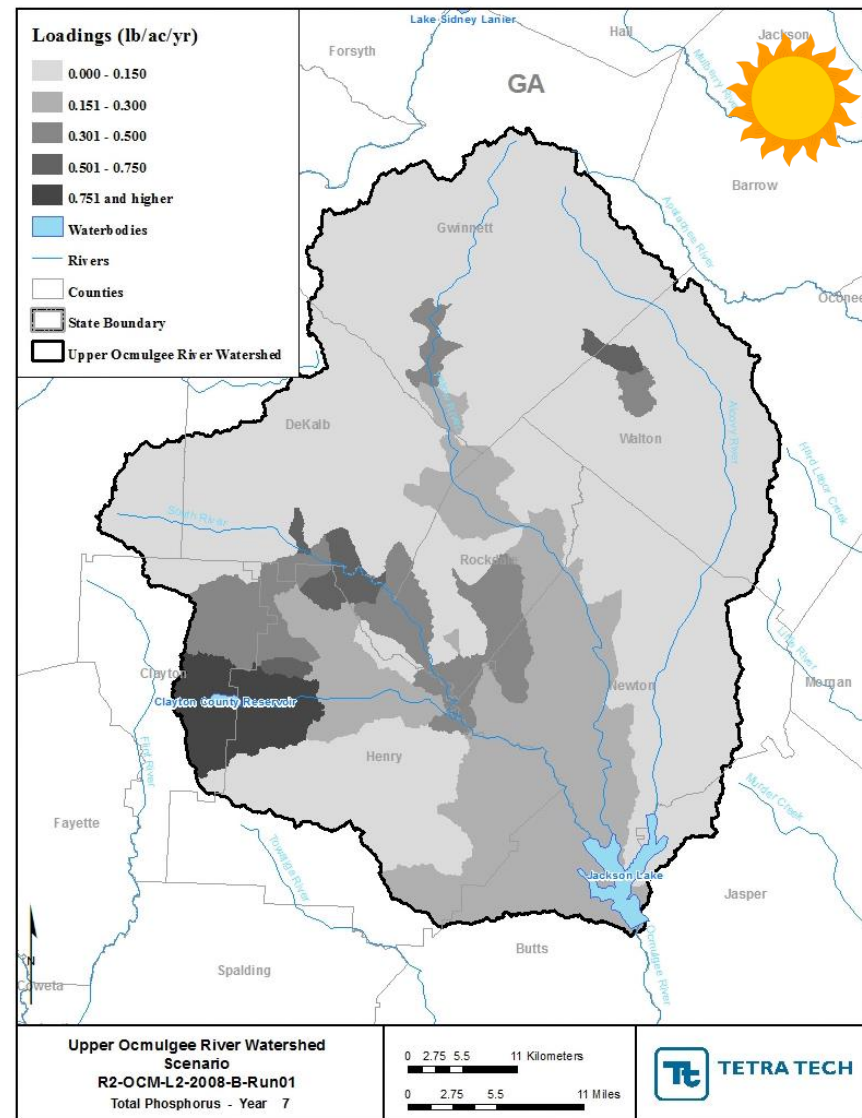
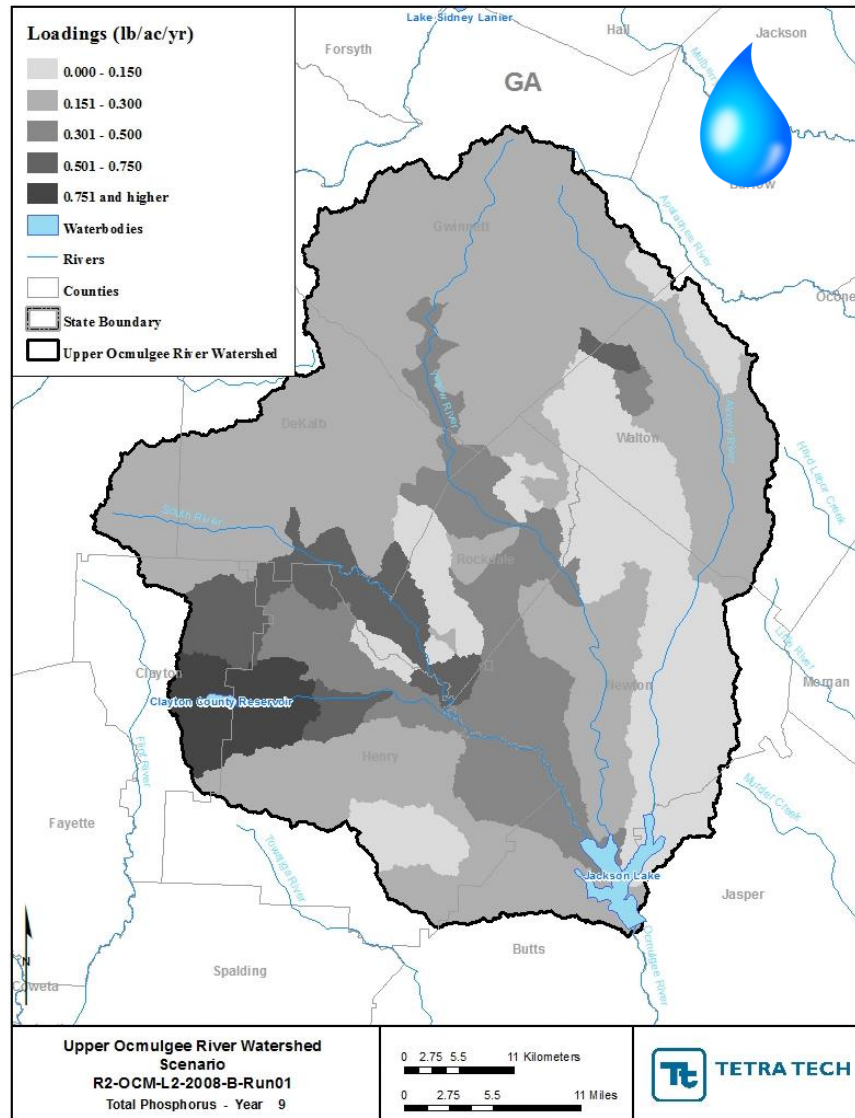
ALTAMAHA GA DOSAG MODEL RESULTS



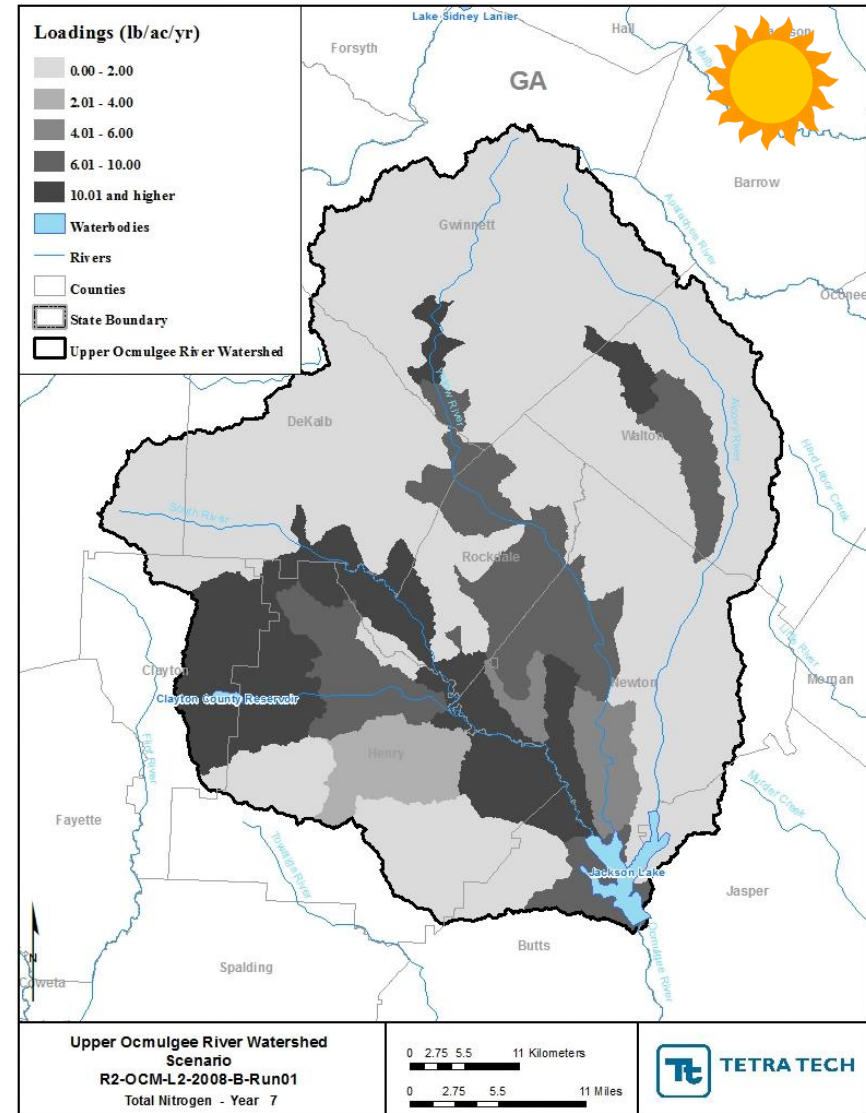
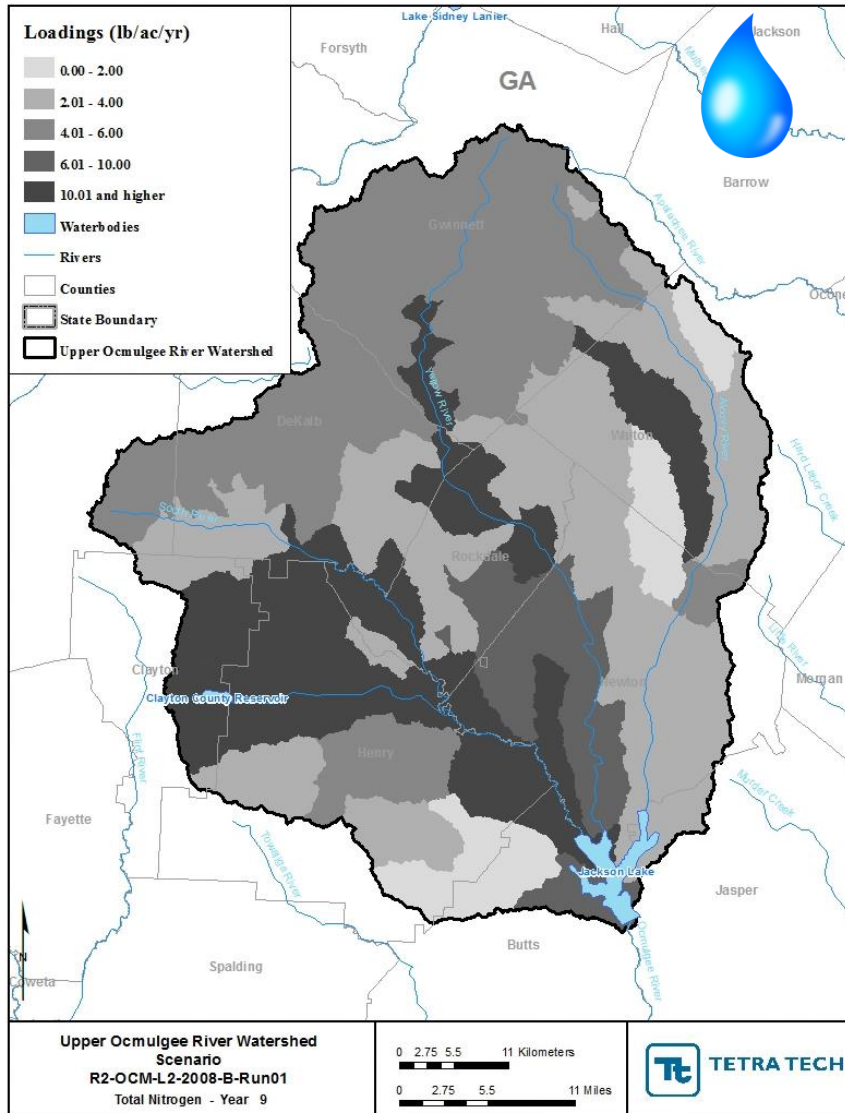
ALTAMAHA GA DOSAG AND GA ESTUARY MODEL RESULTS



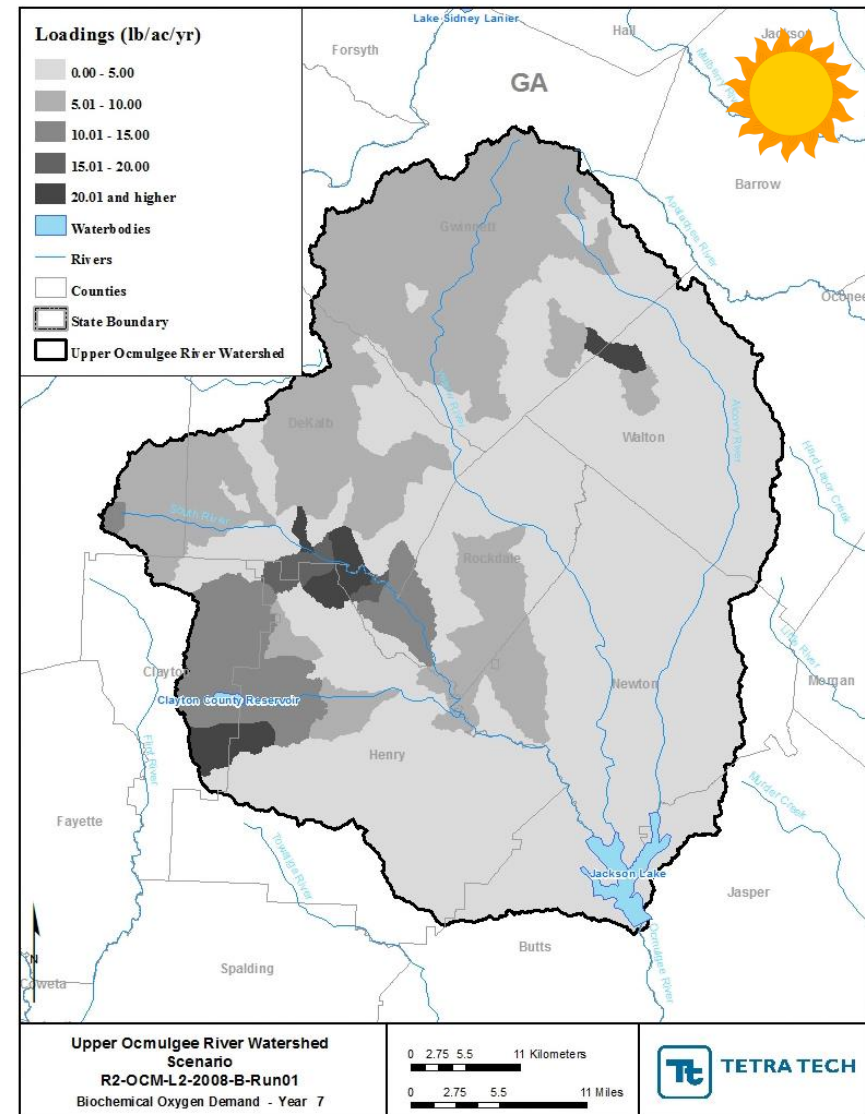
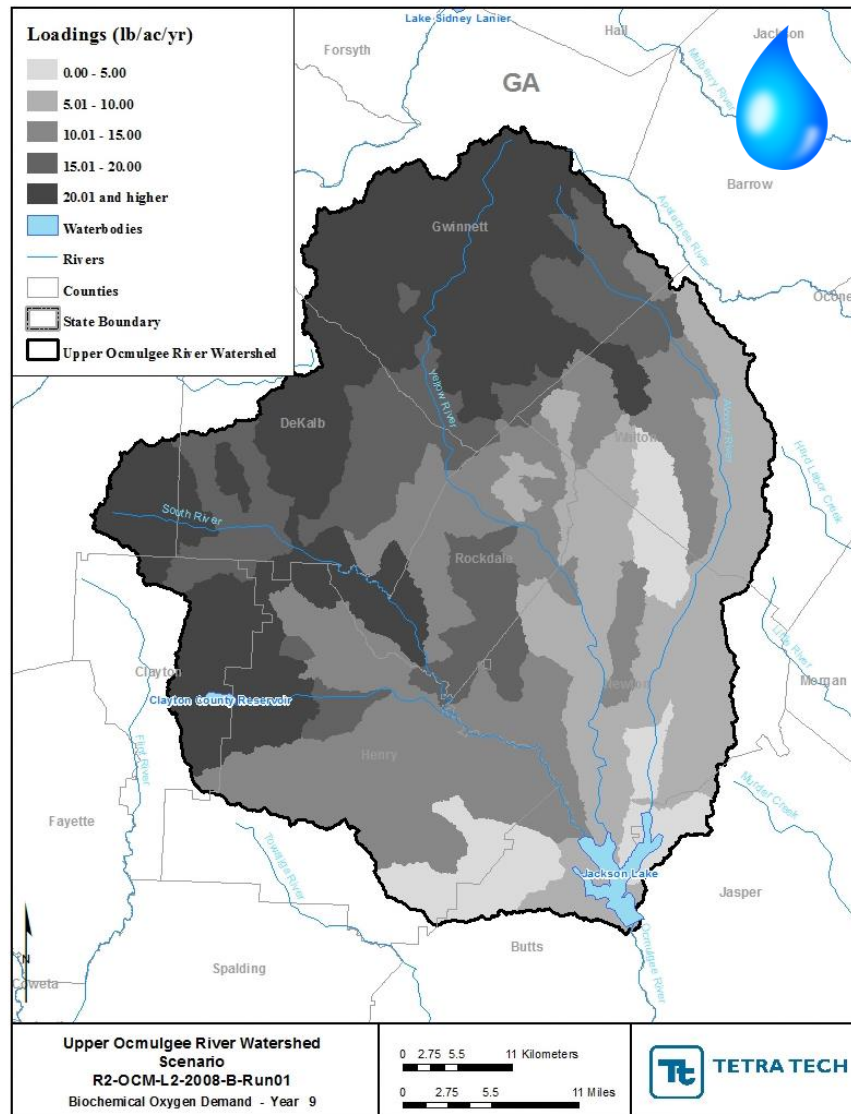
UPPER OCMULGEE TOTAL P HEAT MAPS



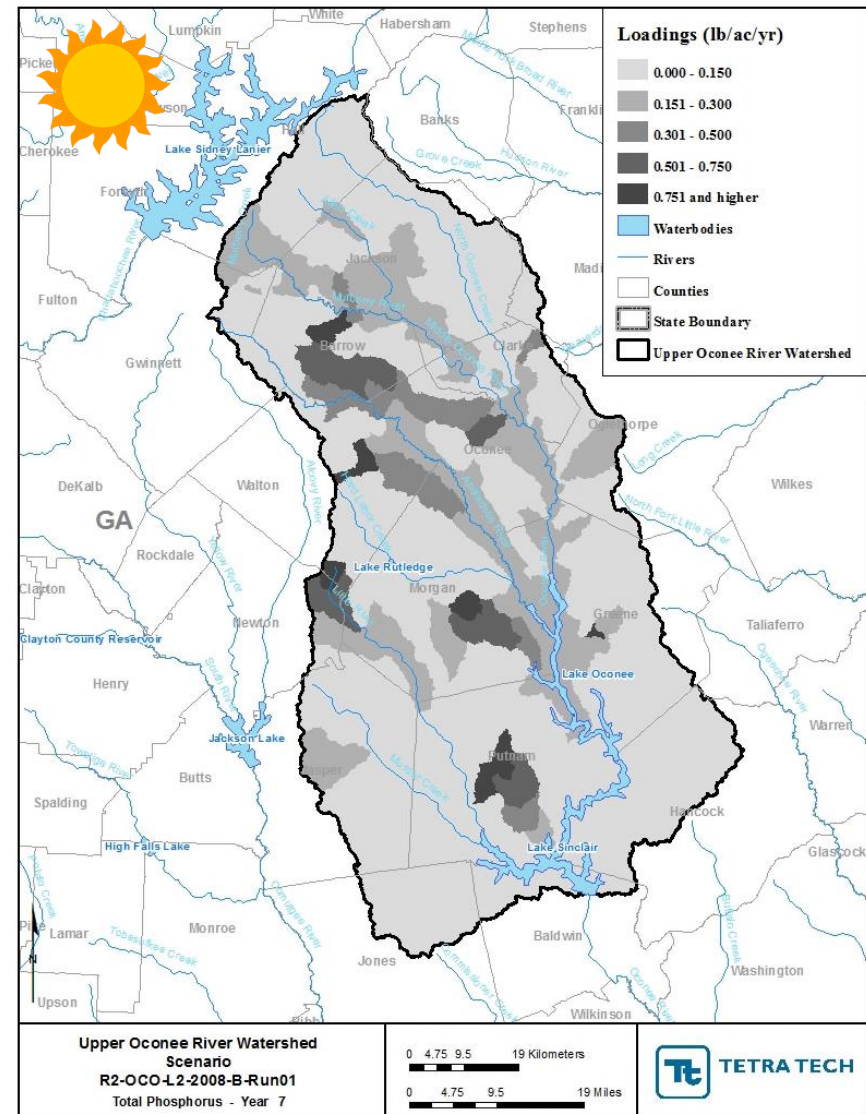
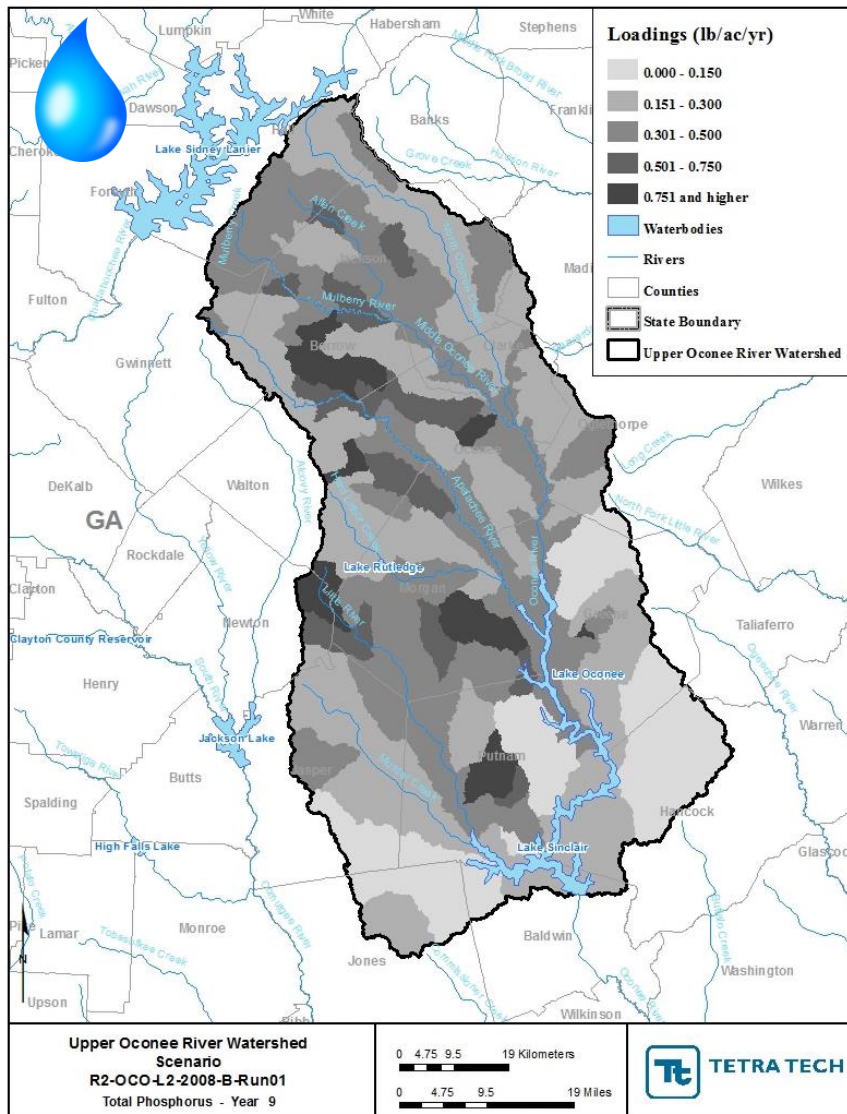
UPPER OCMULGEE TOTAL N HEAT MAPS



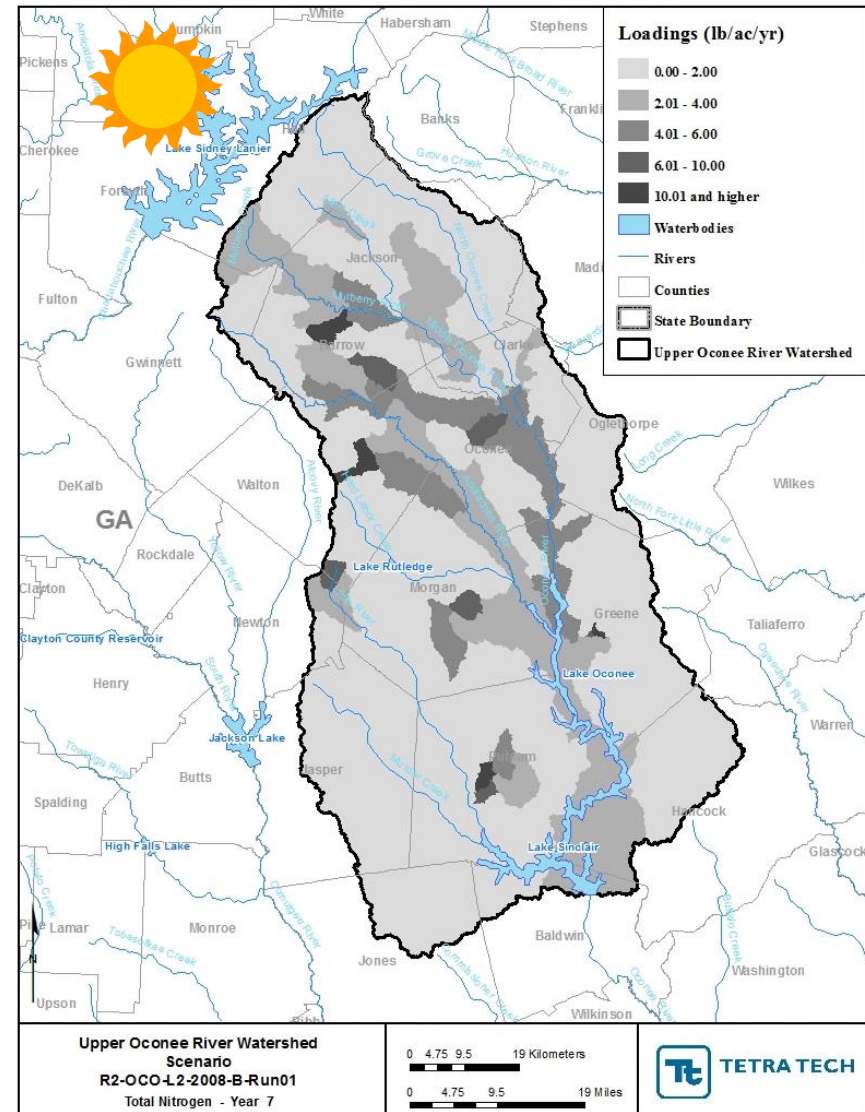
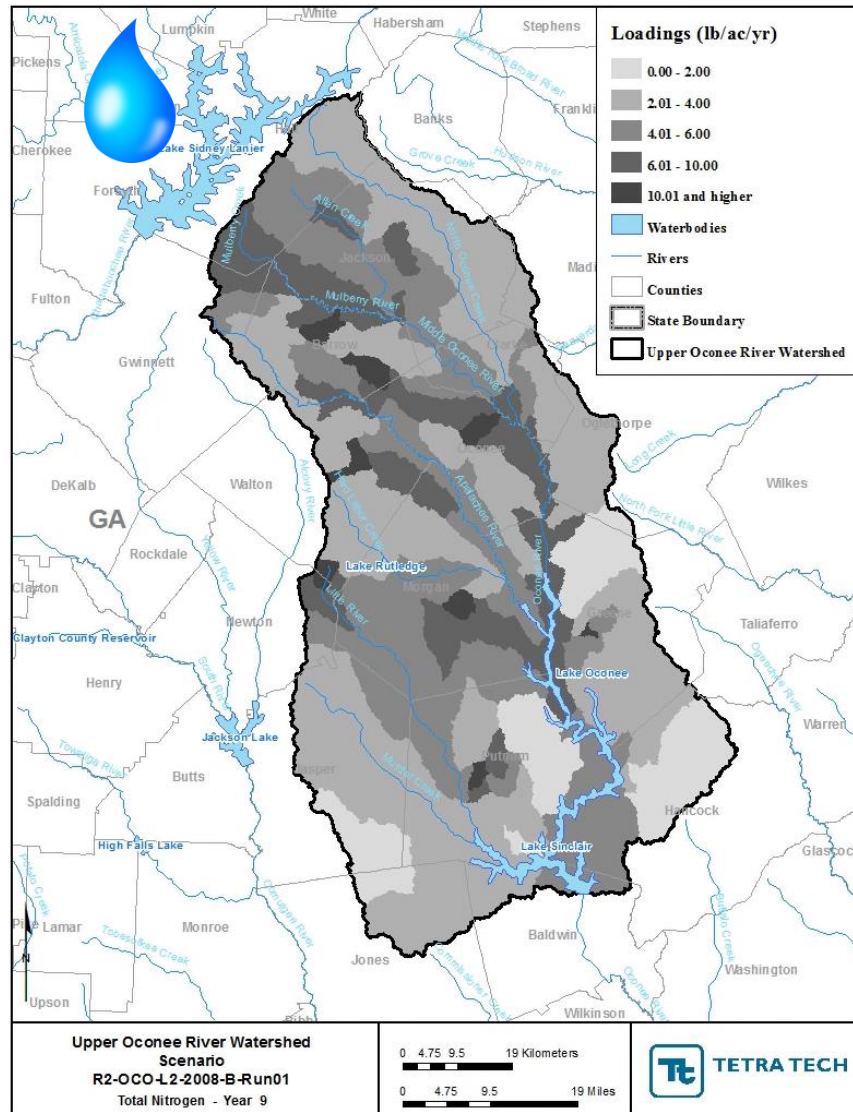
UPPER OCMULGEE BOD HEAT MAPS



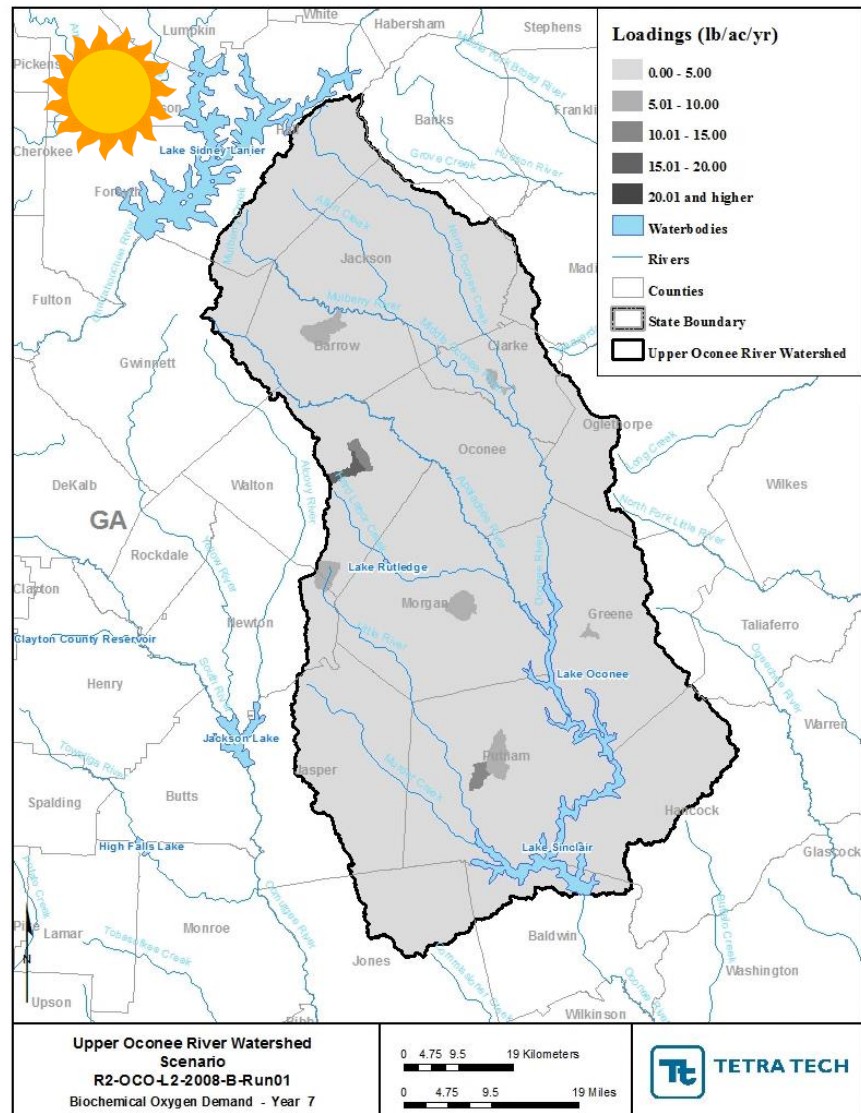
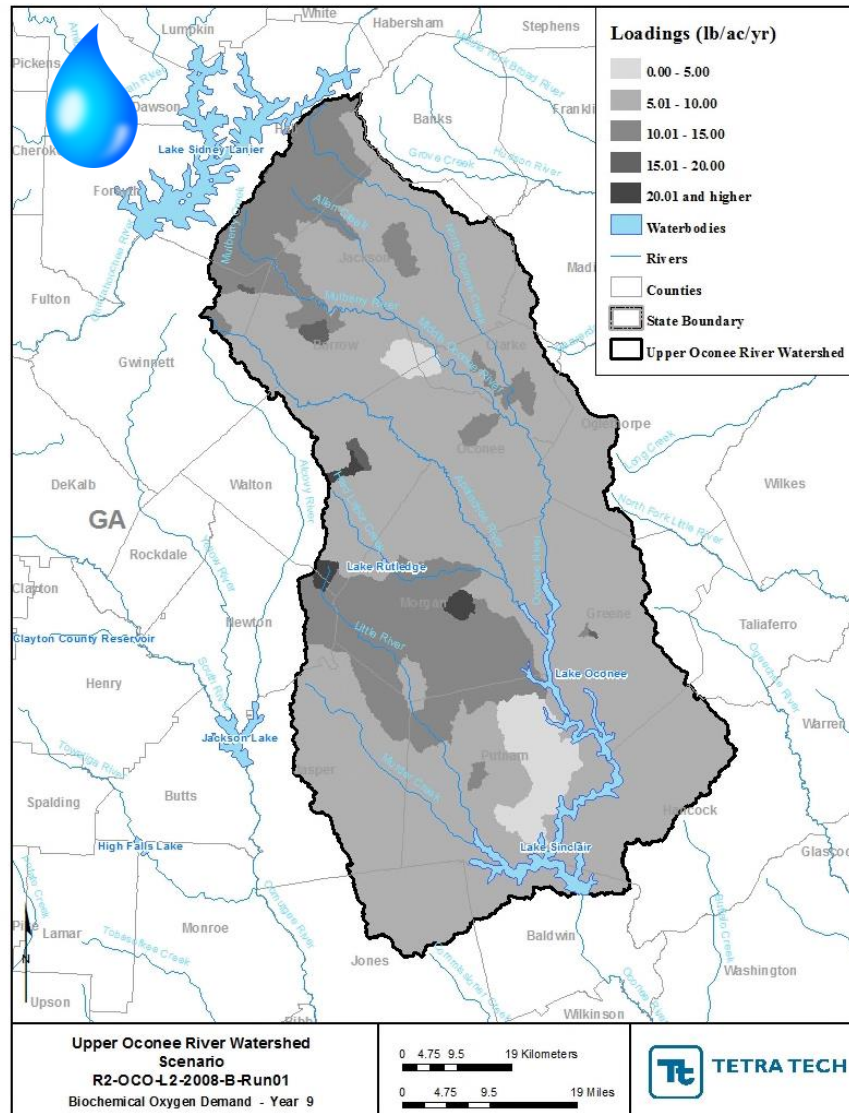
UPPER OCONEE TOTAL P HEAT MAPS

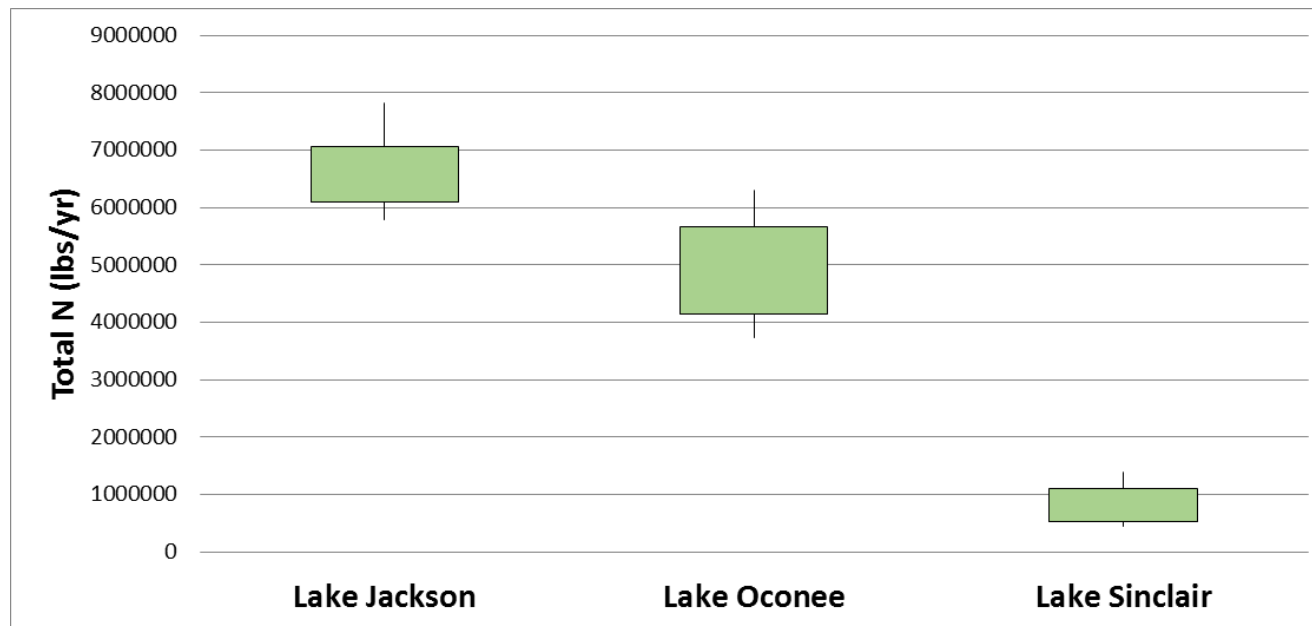
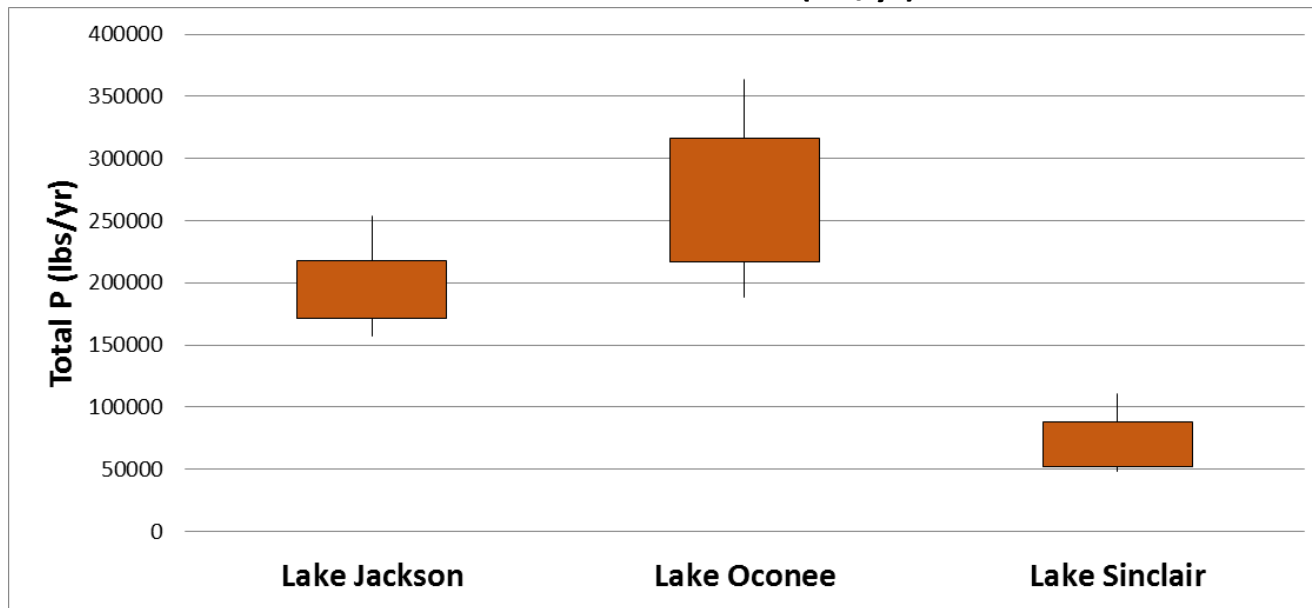


UPPER OCONEE TOTAL N HEAT MAPS

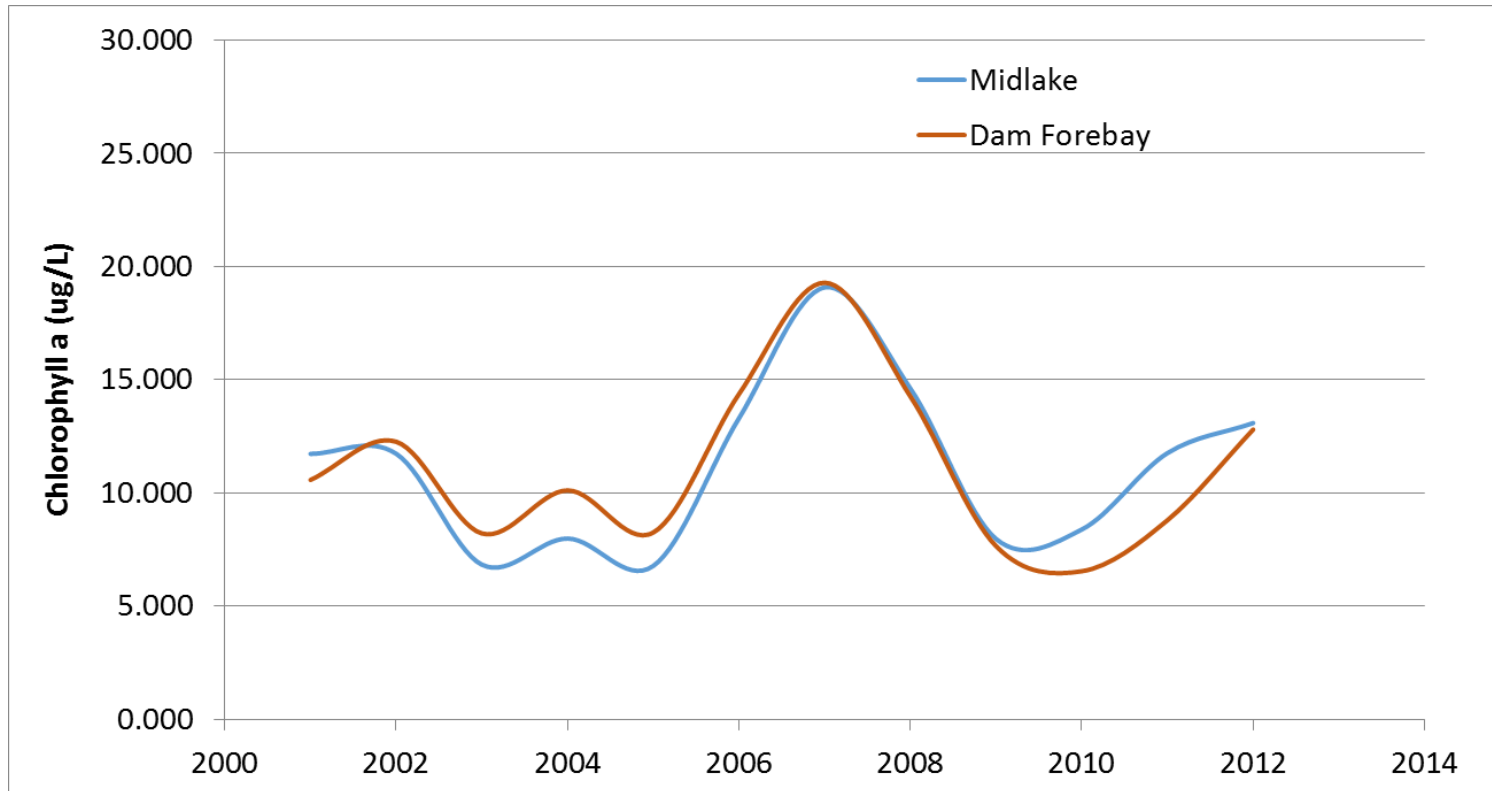


UPPER OCONEE BOD HEAT MAPS



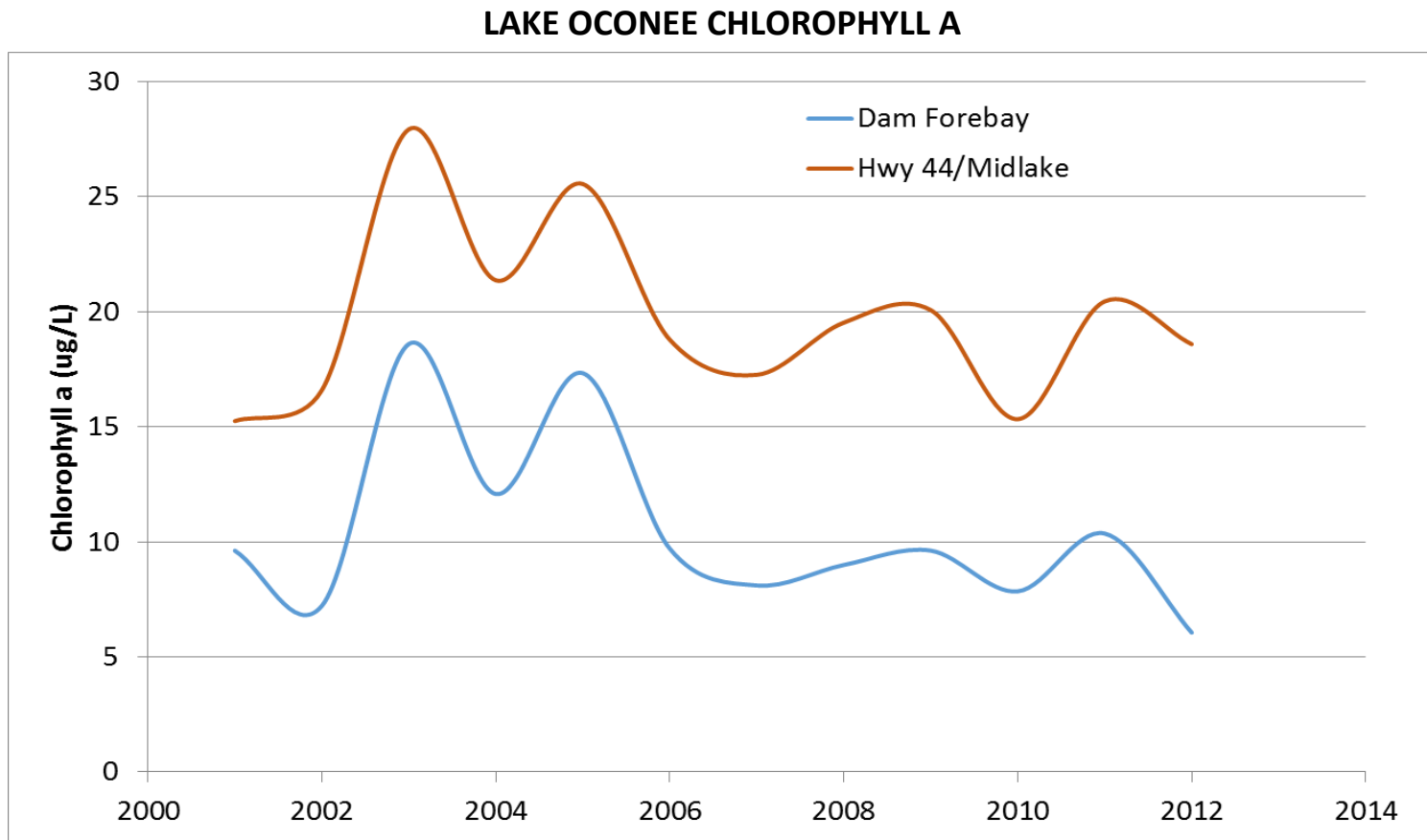
LAKE NUTRIENT LOADS (lbs/yr)

LAKE JACKSON CHLOROPHYLL A



Growing Season Average Total N – 4.0 mg/L

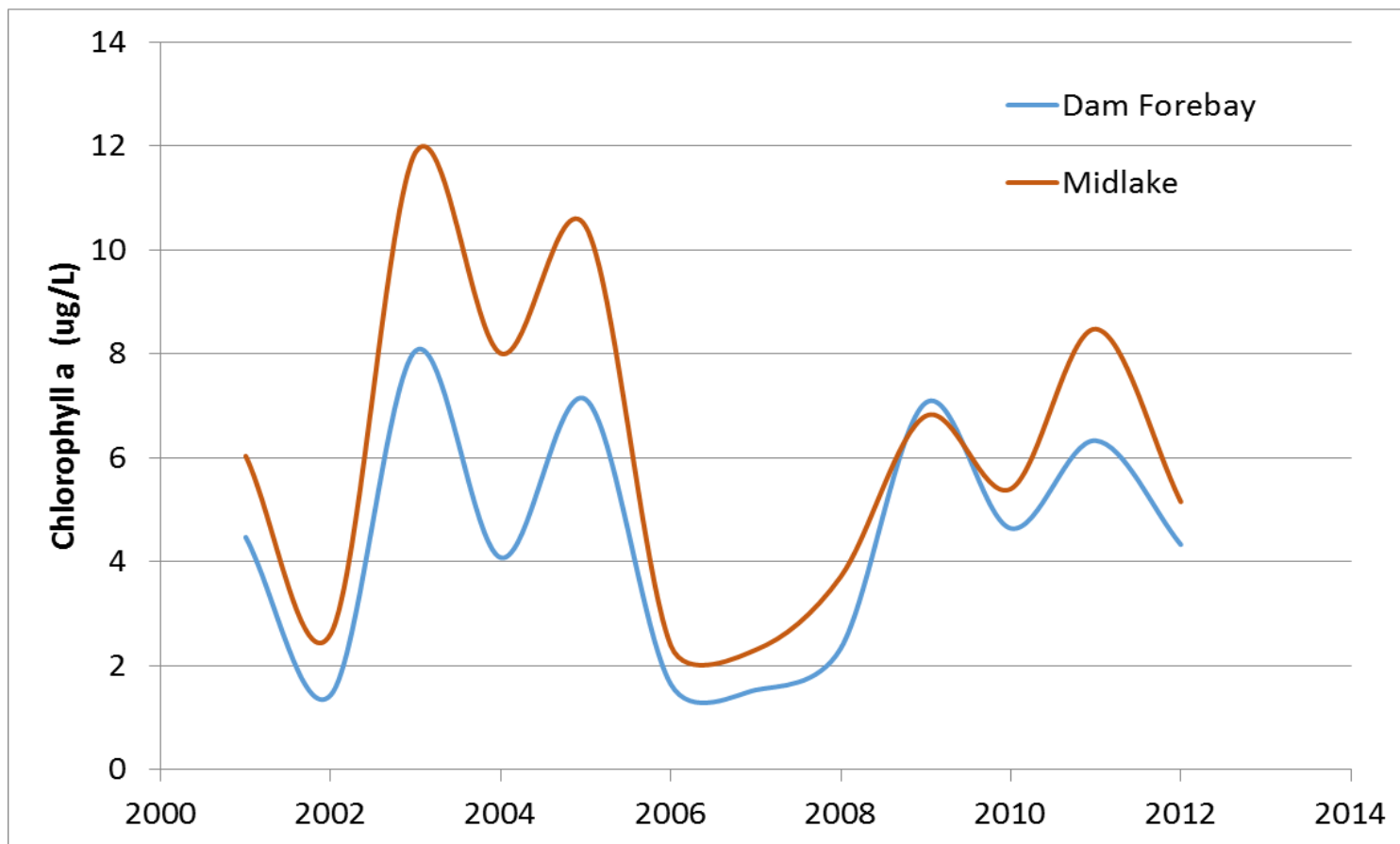
Growing Season Average Total P – 0.12 mg/L



Growing Season Average Total N – 1.6 mg/L

Growing Season Average Total P – 0.07 mg/L

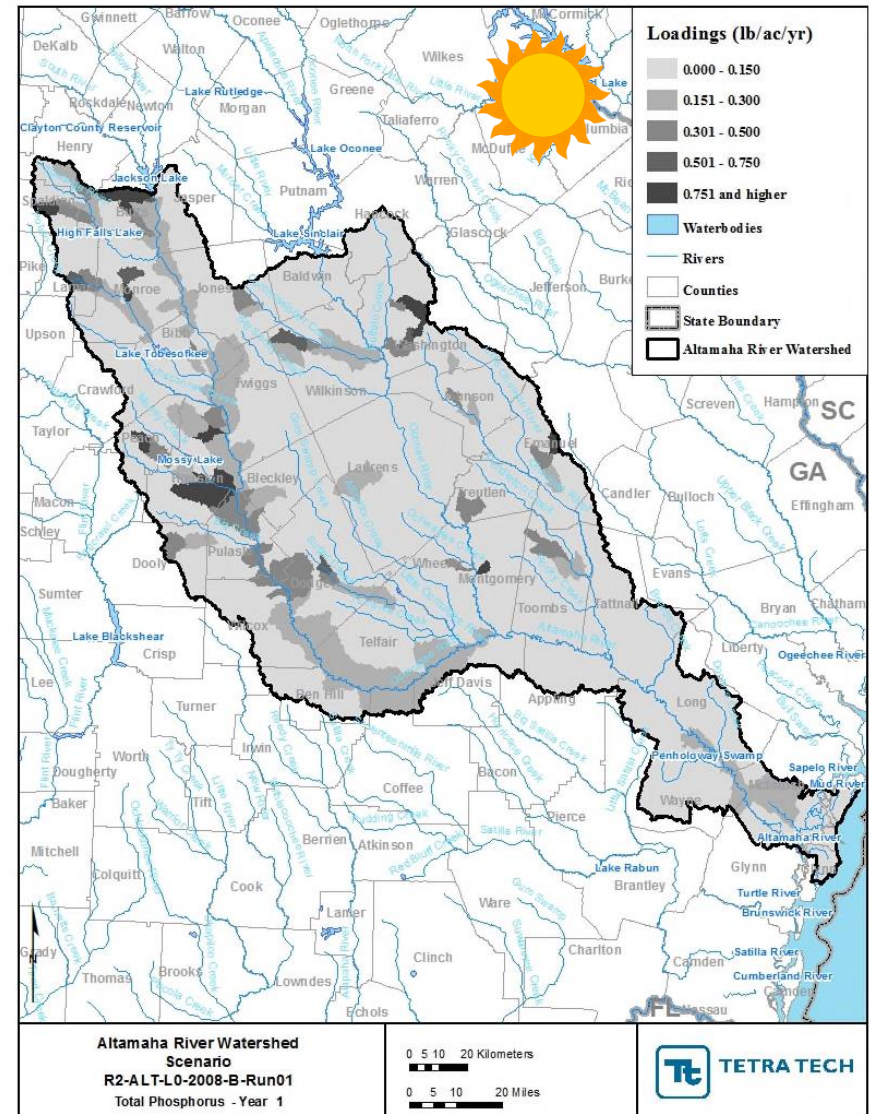
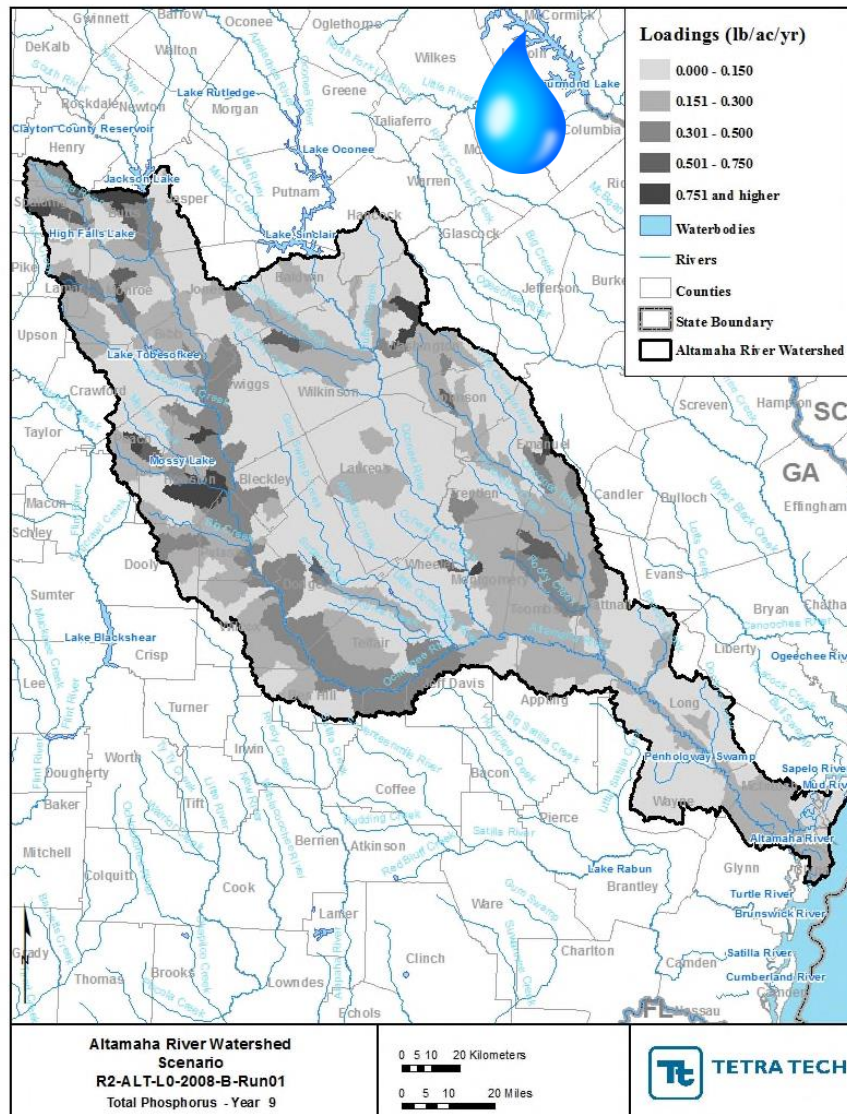
LAKE SINCLAIR CHLOROPHYLL A



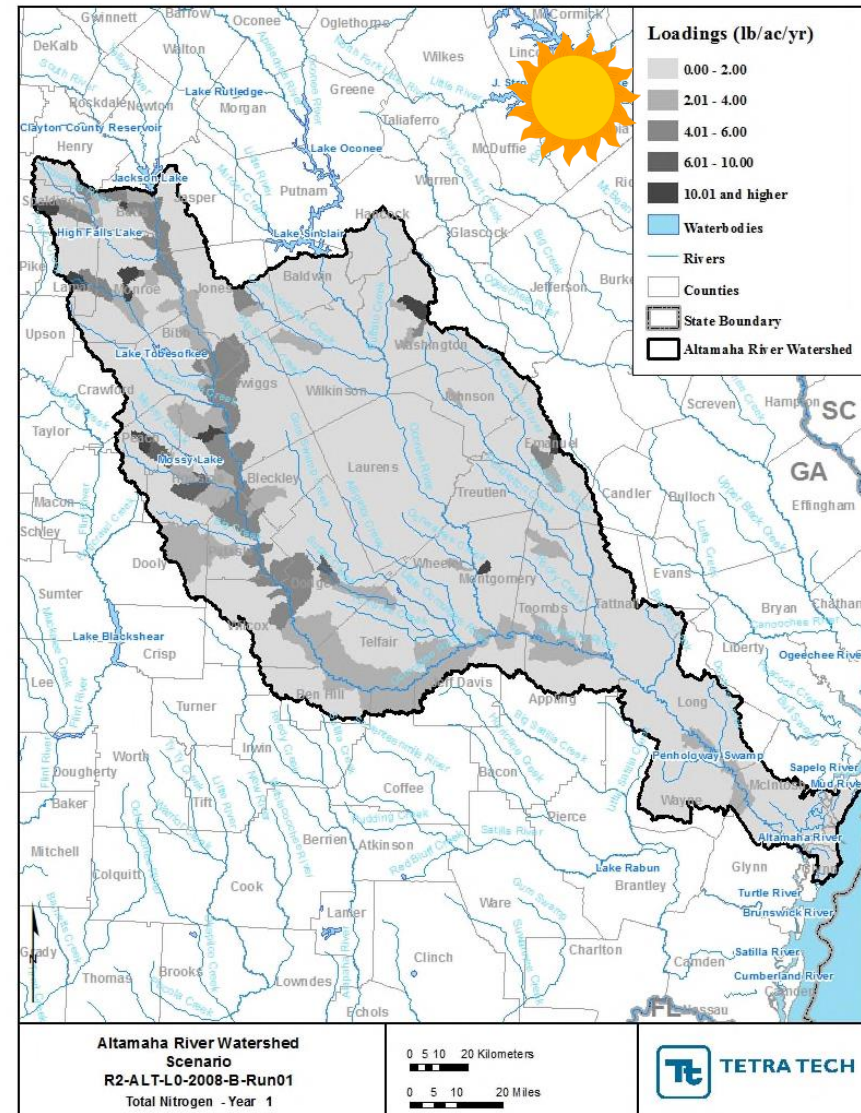
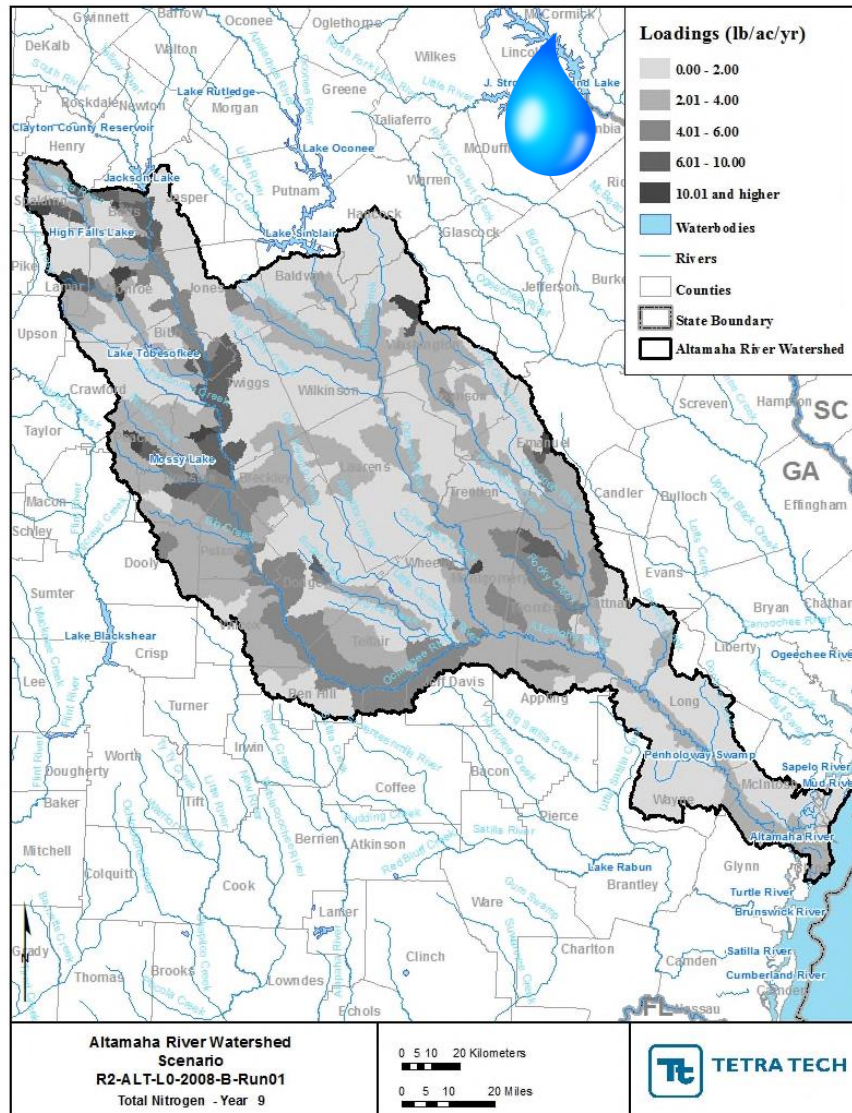
Growing Season Average Total N – 0.8 mg/L

Growing Season Average Total P – 0.07 mg/L

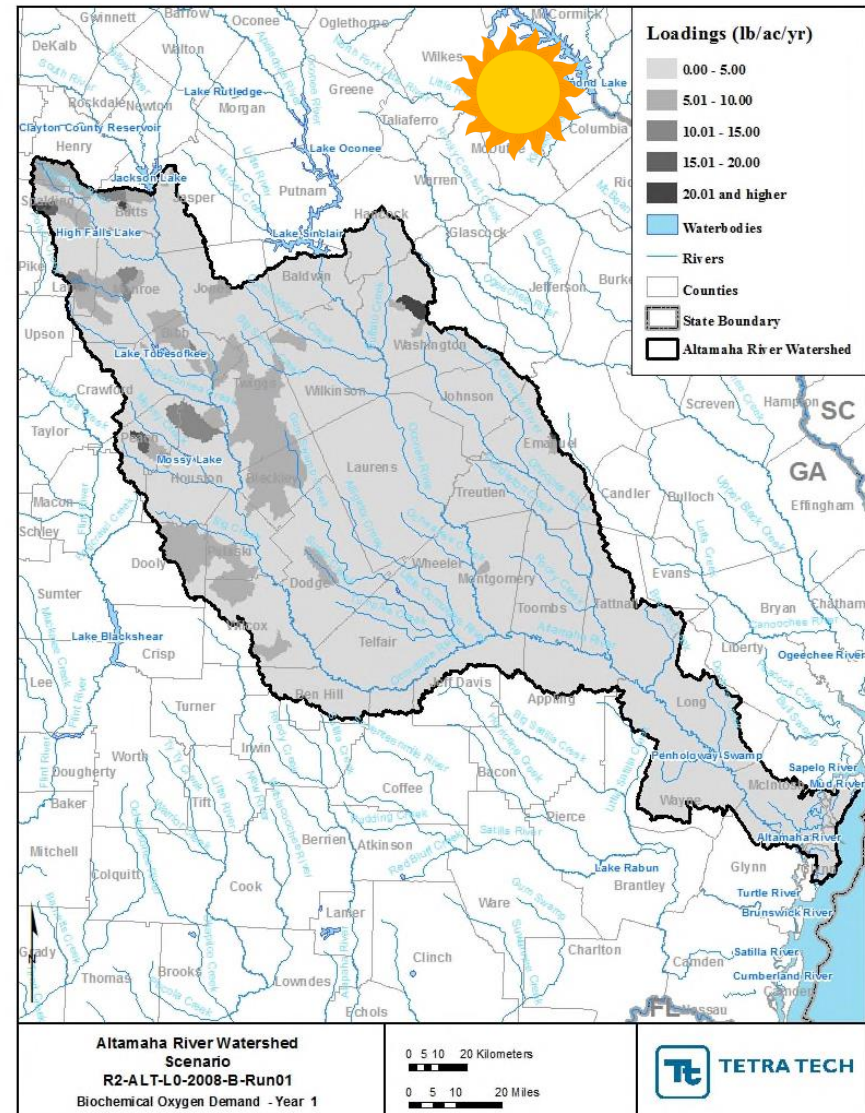
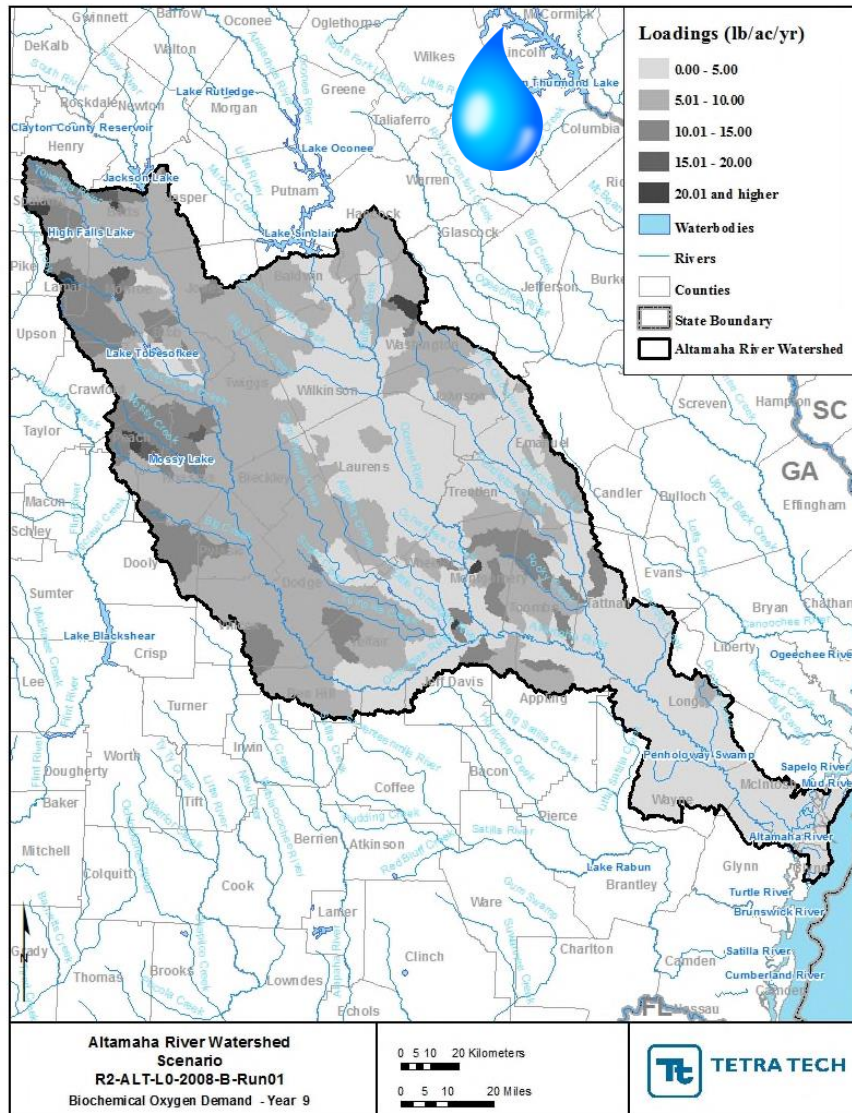
ALTAMAHA TOTAL P HEAT MAPS



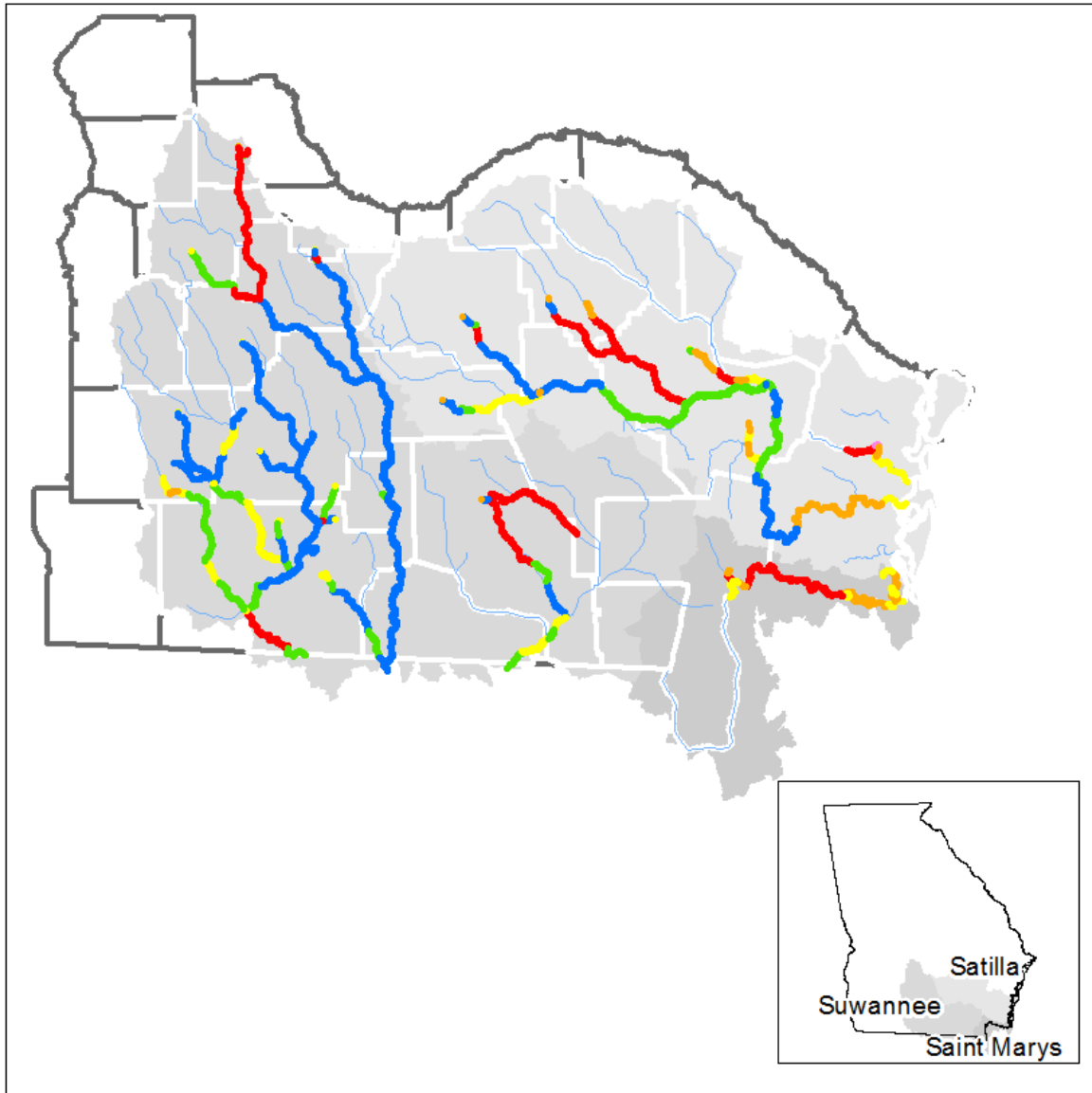
ALTAMAHA TOTAL N HEAT MAPS



ALTAMAHA BOD HEAT MAPS



SUWANNEE, SATILLA, ST MARYS GA DOSAG AND GA ESTUARY MODEL RESULTS

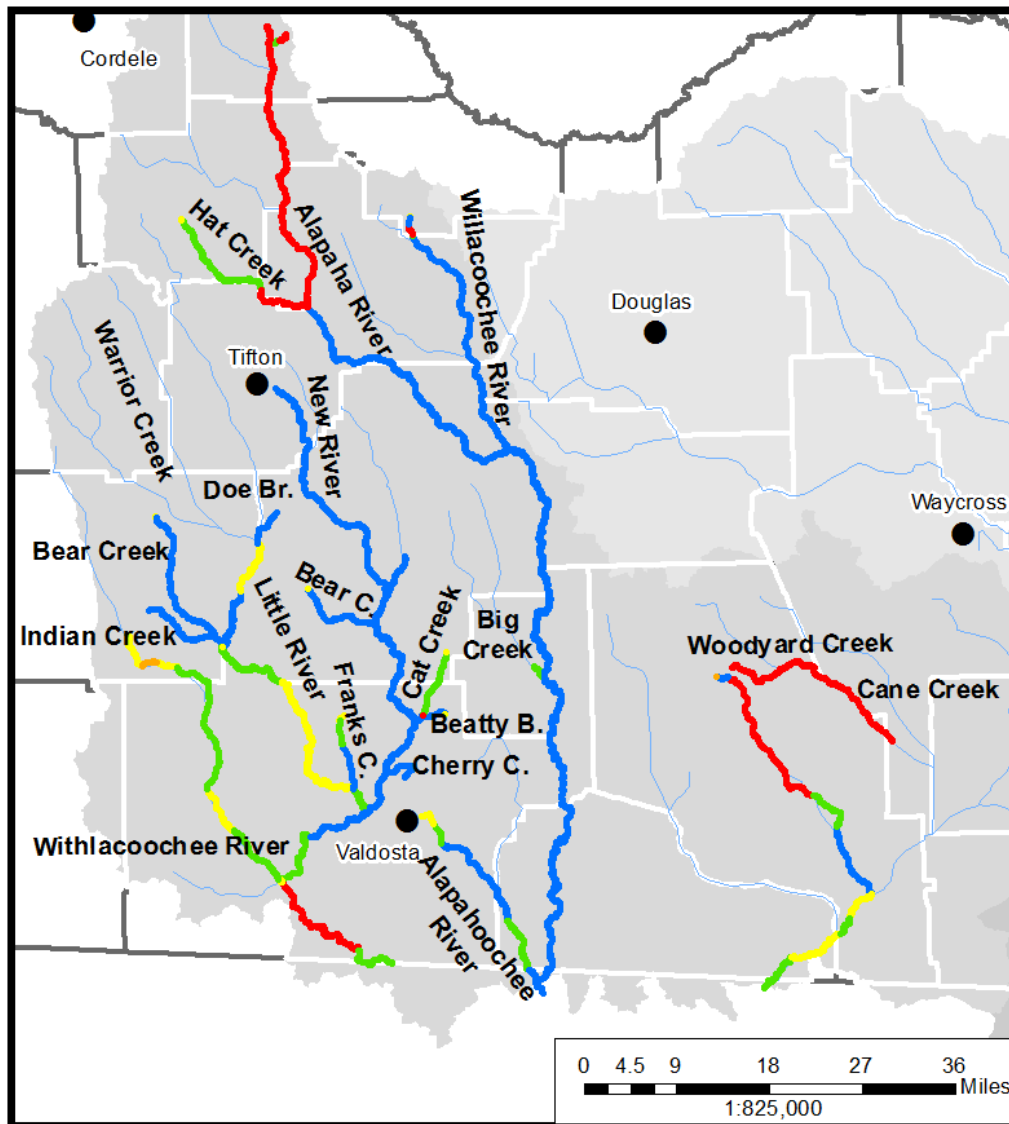


Legend

Available Assimilative Capacity

- Very Good ≥ 1 mg/L DO available
- Good 0.5 mg/L to < 1 mg/L DO available
- Moderate 0.2 mg/L to < 0.5 mg/L DO available
- Limited > 0 mg/L to < 0.2 mg/L DO available
- At Assimilative Capacity 0 mg/L DO available
- None or Exceeded < 0.0 mg/L DO available
- Unmodeled Lakes and Streams

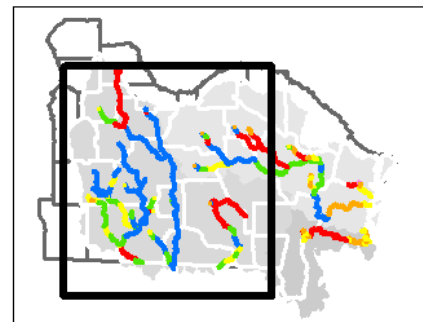
SUWANNEE GA DOSAG MODEL RESULTS



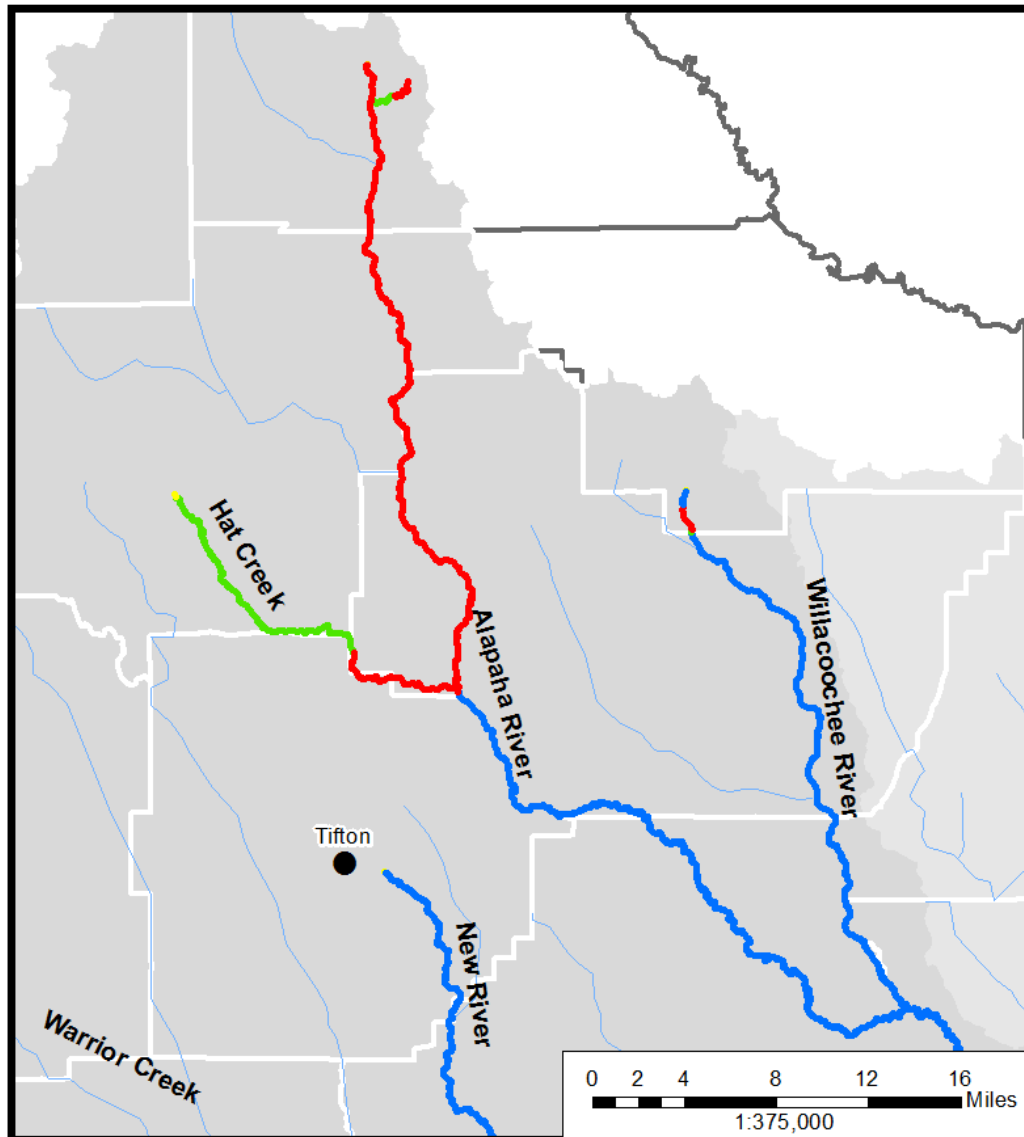
Legend

Available Assimilative Capacity

- ~ Very Good ≥ 1 mg/L DO available
- ~ Good 0.5 mg/L to < 1 mg/L DO available
- ~ Moderate 0.2 mg/L to < 0.5 mg/L DO available
- ~ Limited > 0 mg/L to < 0.2 mg/L DO available
- ~ At Assimilative Capacity 0 mg/L DO available
- ~ None or Exceeded < 0.0 mg/L DO available
- ~ Unmodeled Lakes and Streams



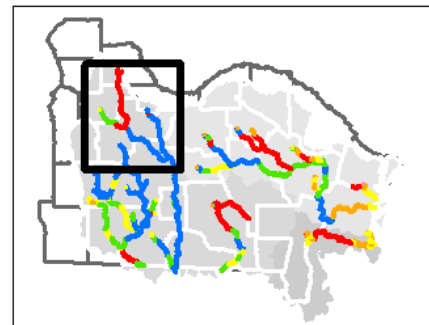
SUWANNEE GA DOSAG MODEL RESULTS



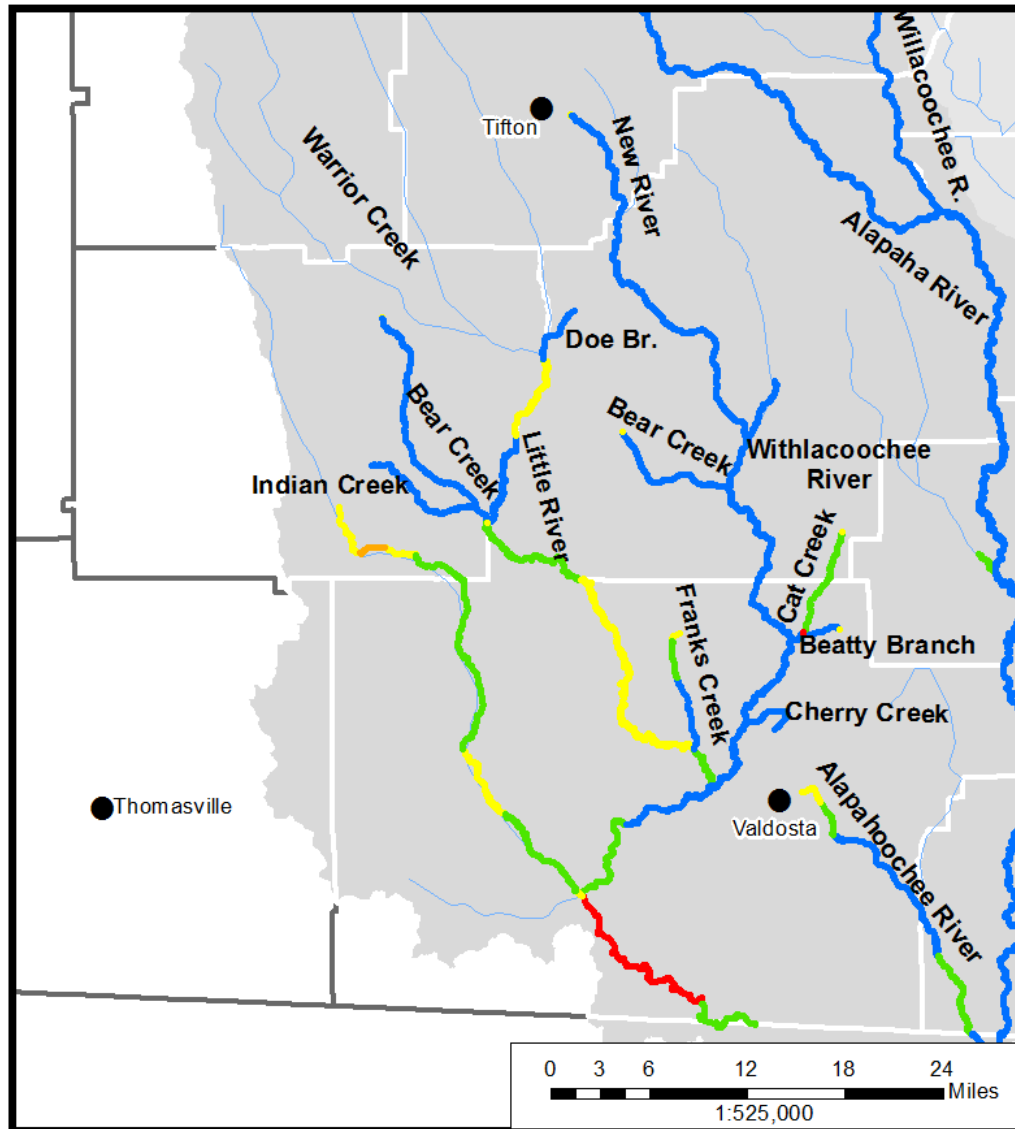
Legend

Available Assimilative Capacity

- Very Good ≥ 1 mg/L DO available
- Good 0.5 mg/L to < 1 mg/L DO available
- Moderate 0.2 mg/L to < 0.5 mg/L DO available
- Limited > 0 mg/L to < 0.2 mg/L DO available
- At Assimilative Capacity 0 mg/L DO available
- None or Exceeded < 0.0 mg/L DO available
- Unmodeled Lakes and Streams



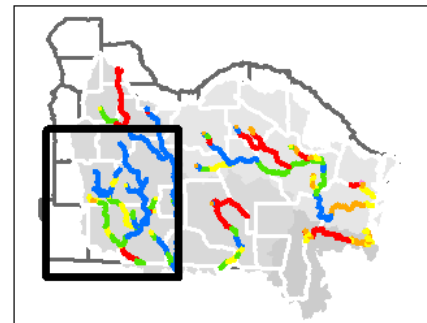
SUWANNEE GA DOSAG MODEL RESULTS



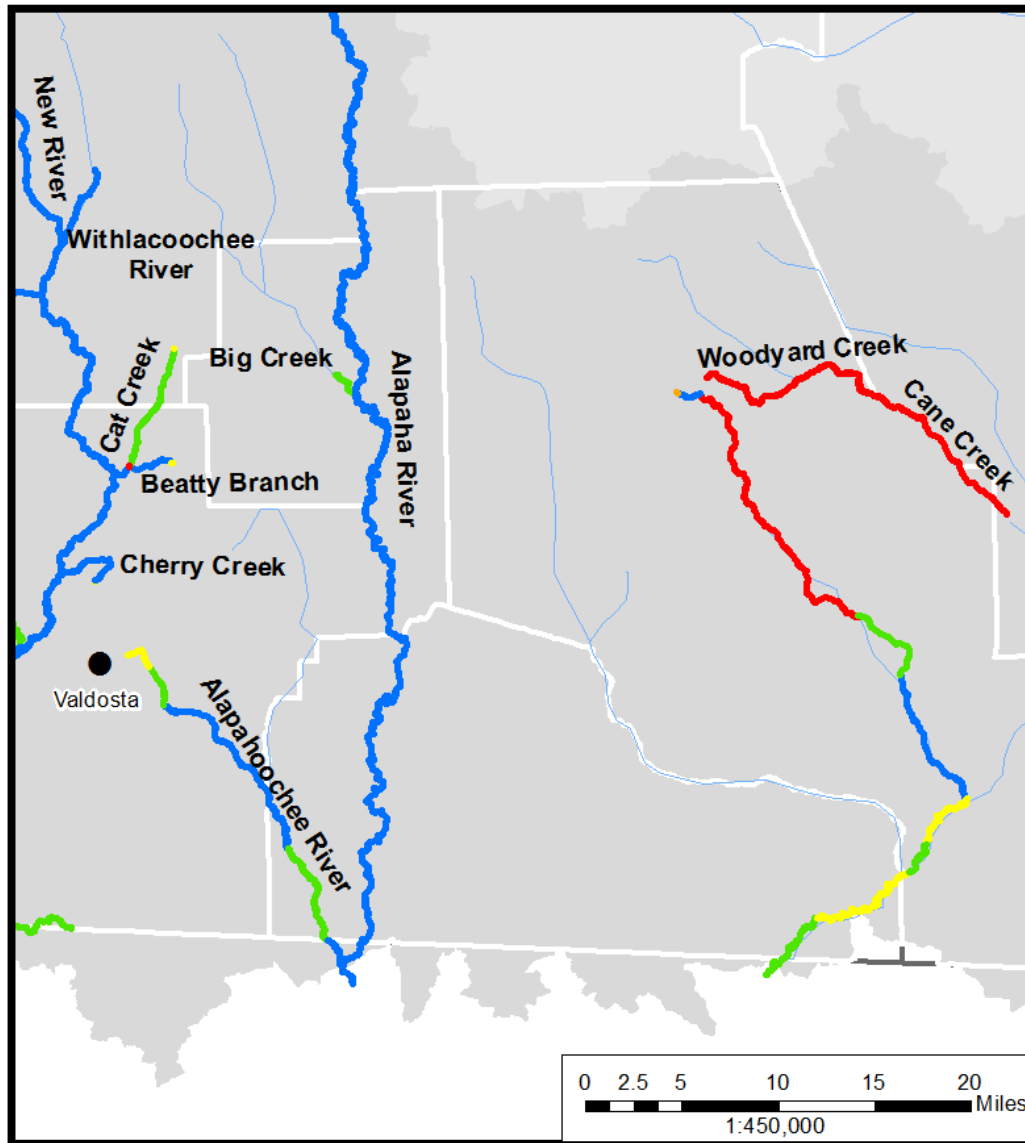
Legend

Available Assimilative Capacity

- Very Good ≥ 1 mg/L DO available
- Good 0.5 mg/L to < 1 mg/L DO available
- Moderate 0.2 mg/L to < 0.5 mg/L DO available
- Limited > 0 mg/L to < 0.2 mg/L DO available
- At Assimilative Capacity 0 mg/L DO available
- None or Exceeded < 0.0 mg/L DO available
- Unmodeled Lakes and Streams



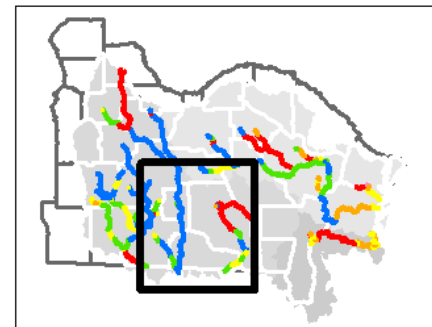
SUWANNEE GA DOSAG MODEL RESULTS



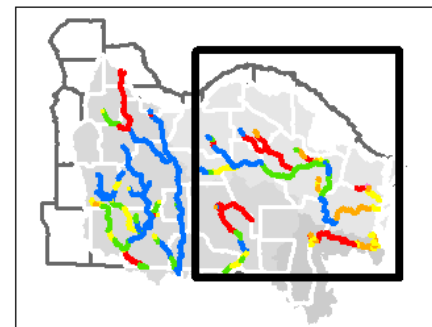
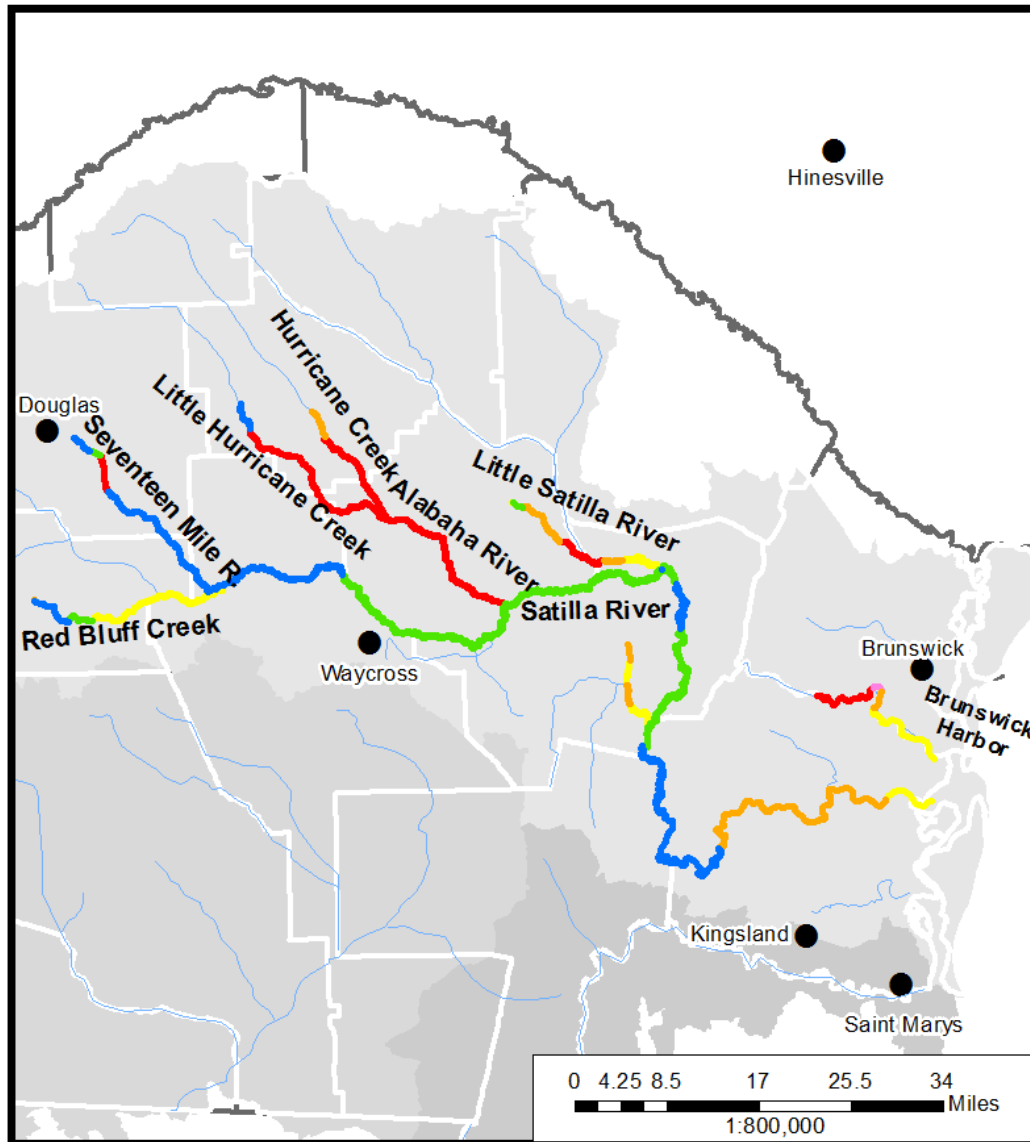
Legend

Available Assimilative Capacity

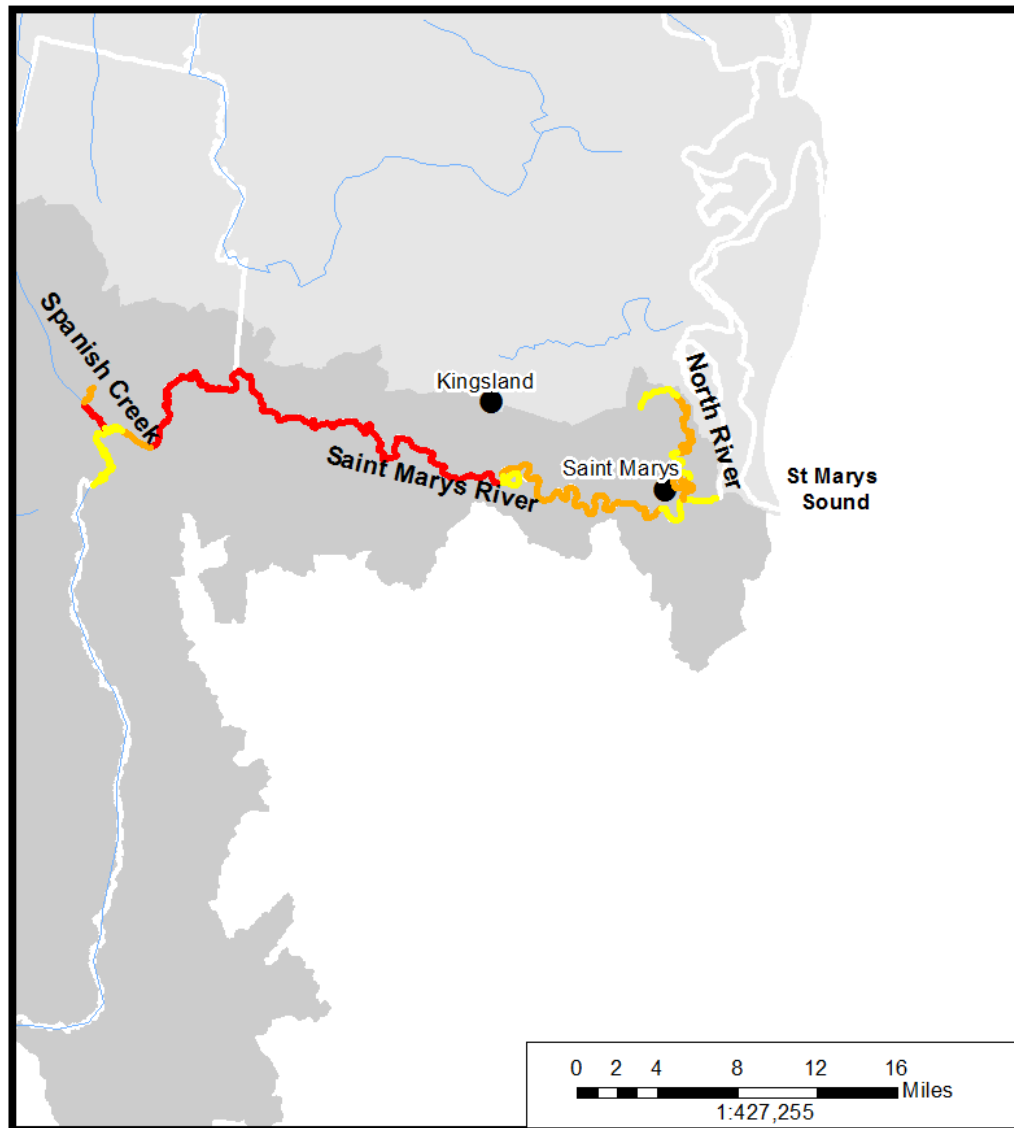
- Very Good ≥ 1 mg/L DO available
- Good 0.5 mg/L to < 1 mg/L DO available
- Moderate 0.2 mg/L to < 0.5 mg/L DO available
- Limited > 0 mg/L to < 0.2 mg/L DO available
- At Assimilative Capacity 0 mg/L DO available
- None or Exceeded < 0.0 mg/L DO available
- Unmodeled Lakes and Streams



SATILLA GA DOSAG AND GA ESTUARY MODEL RESULTS



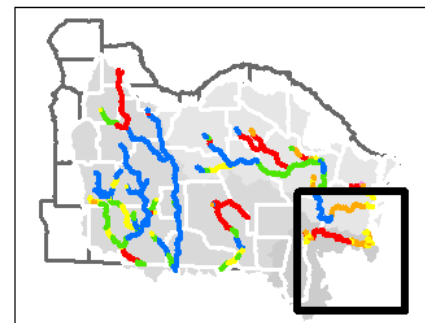
ST MARYS GA DOSAG AND GA ESTUARY MODEL RESULTS



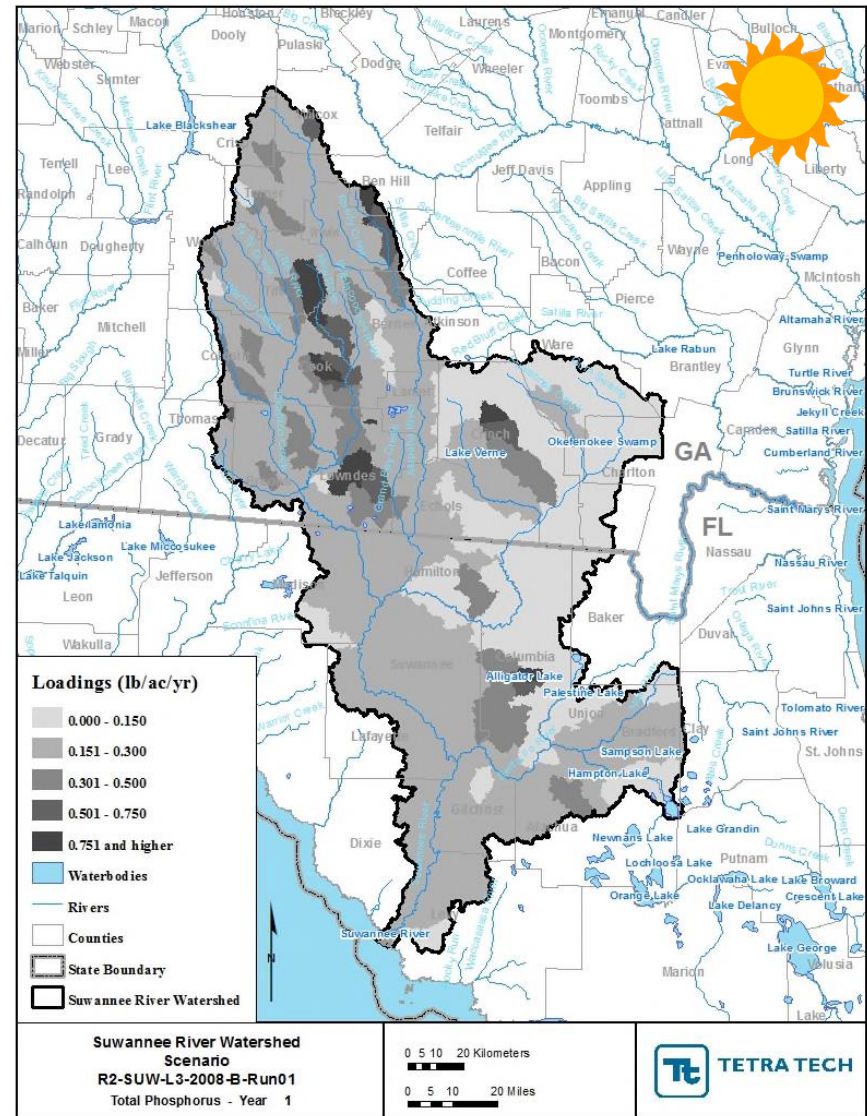
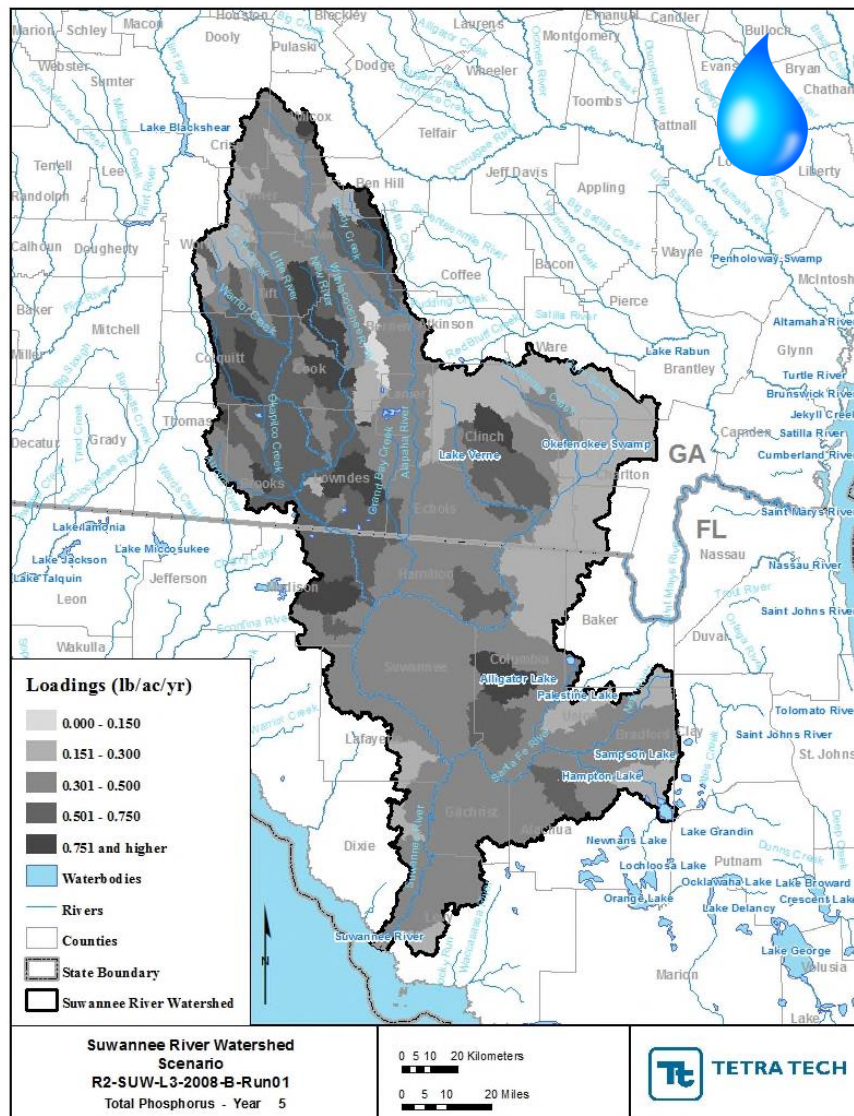
Legend

Available Assimilative Capacity

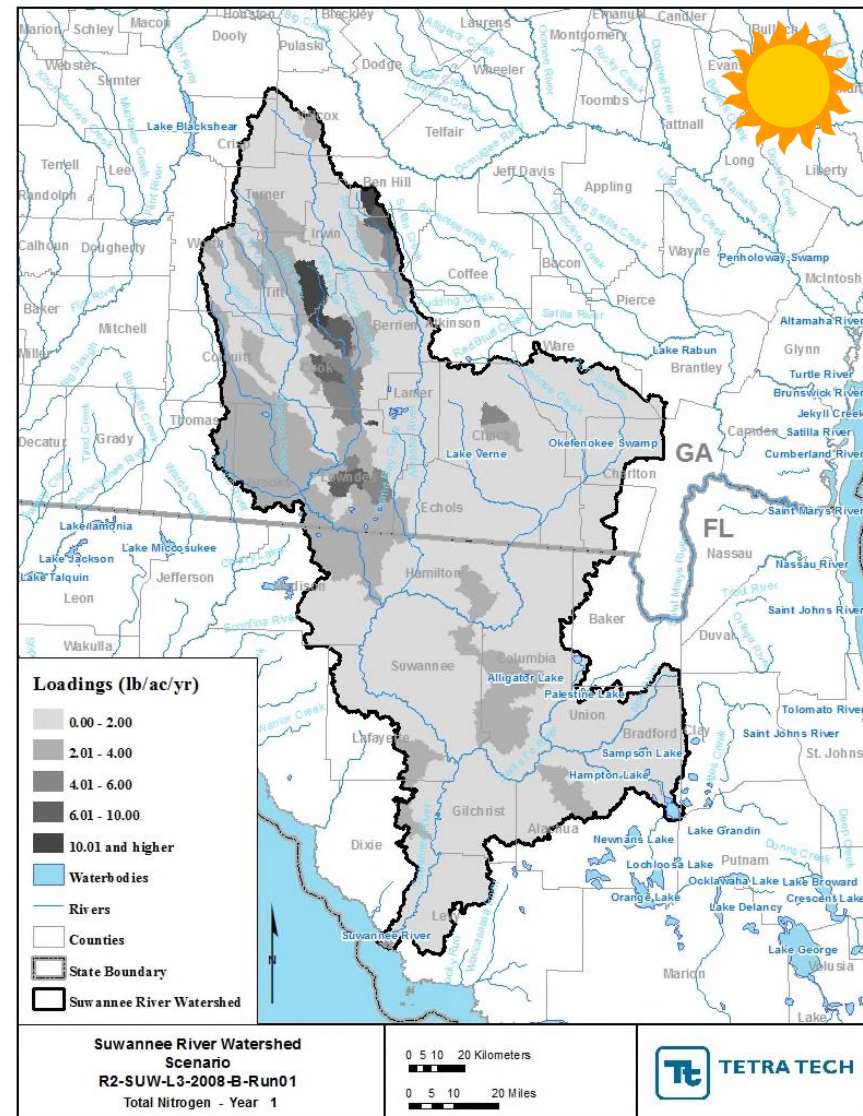
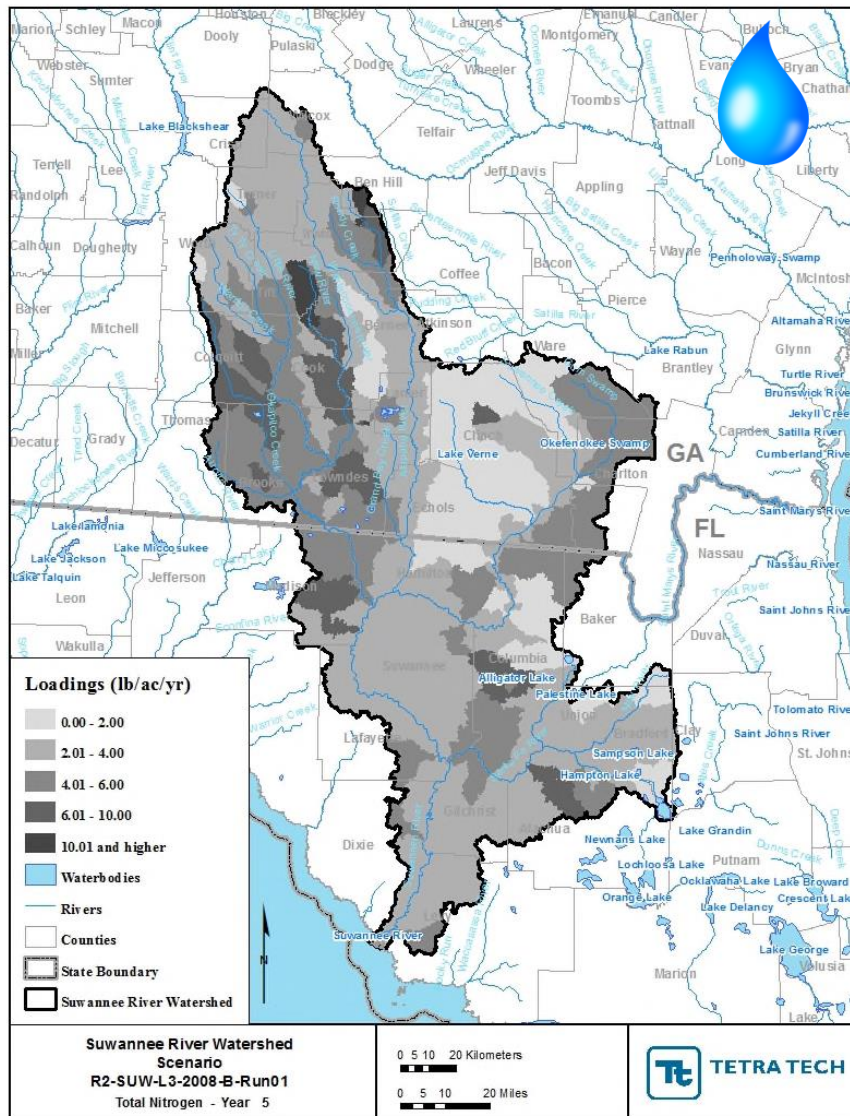
- ~ Very Good ≥ 1 mg/L DO available
- ~ Good 0.5 mg/L to < 1 mg/L DO available
- ~ Moderate 0.2 mg/L to < 0.5 mg/L DO available
- ~ Limited > 0 mg/L to < 0.2 mg/L DO available
- ~ At Assimilative Capacity 0 mg/L DO available
- ~ None or Exceeded < 0.0 mg/L DO available
- ~ Unmodeled Lakes and Streams



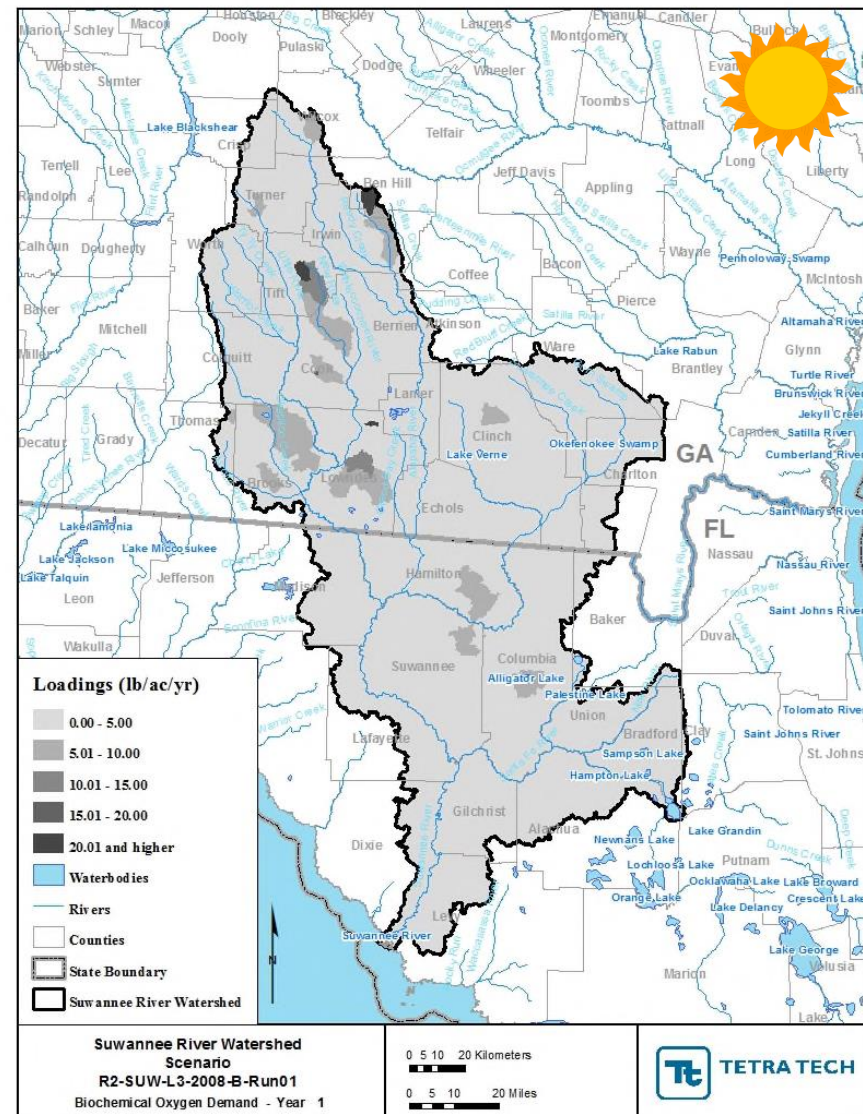
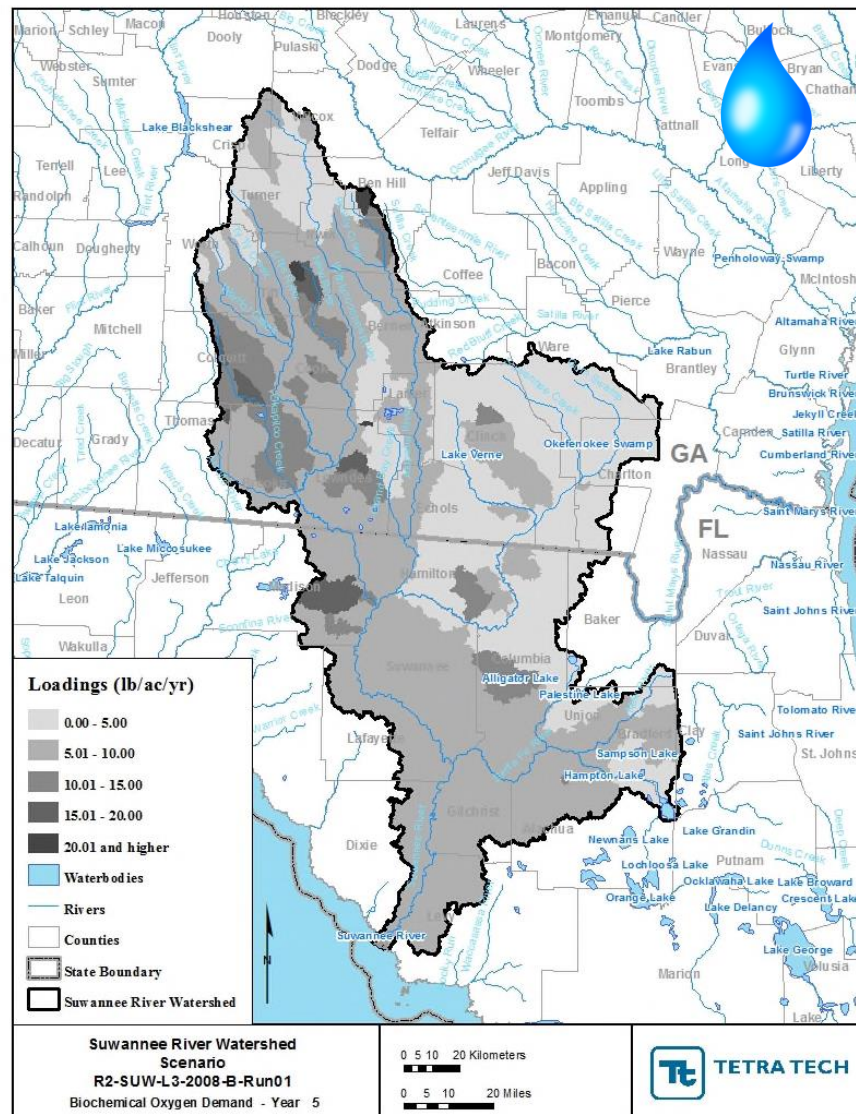
SUWANNEE TOTAL P HEAT MAPS

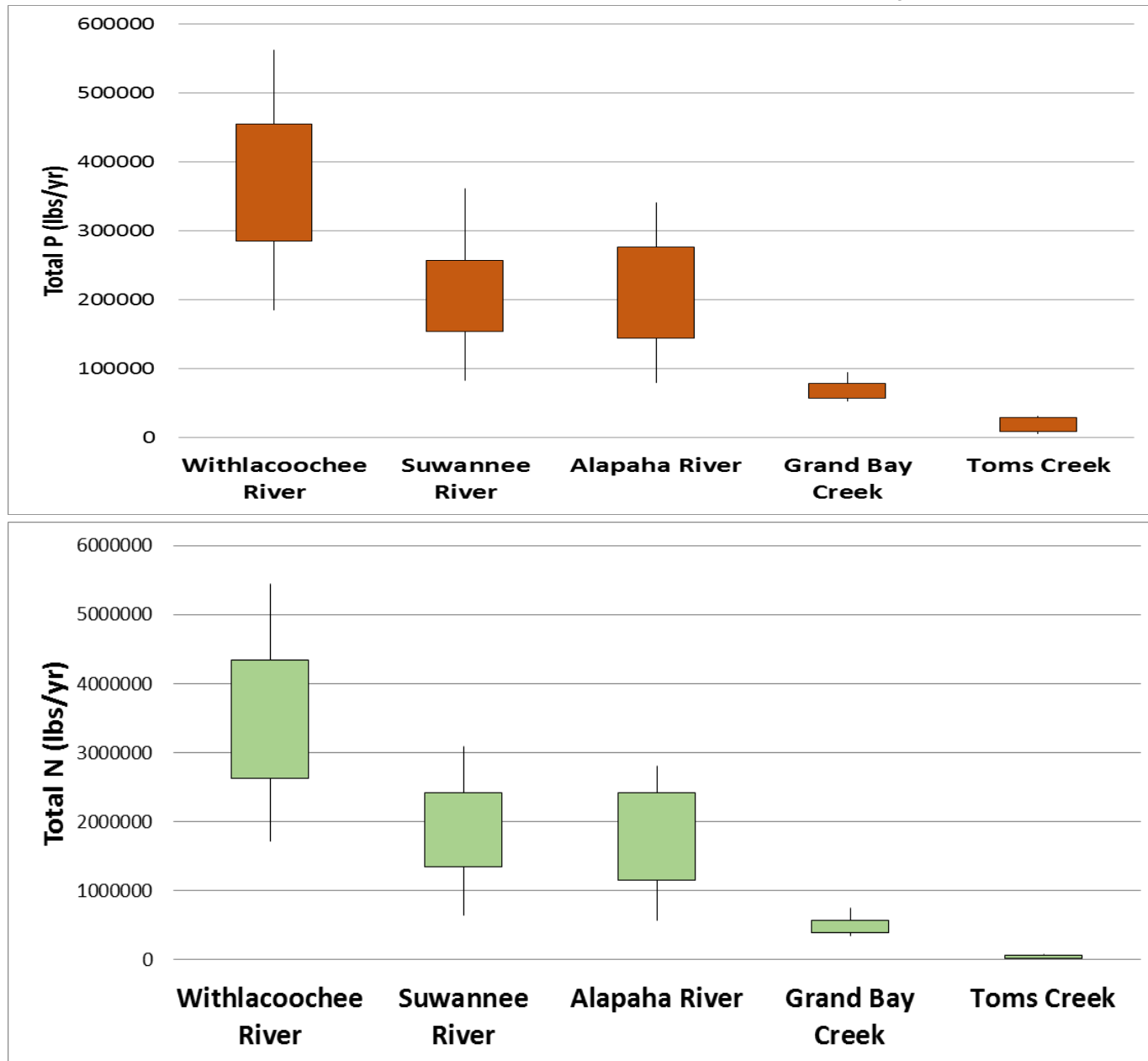


SUWANNEE TOTAL N HEAT MAPS

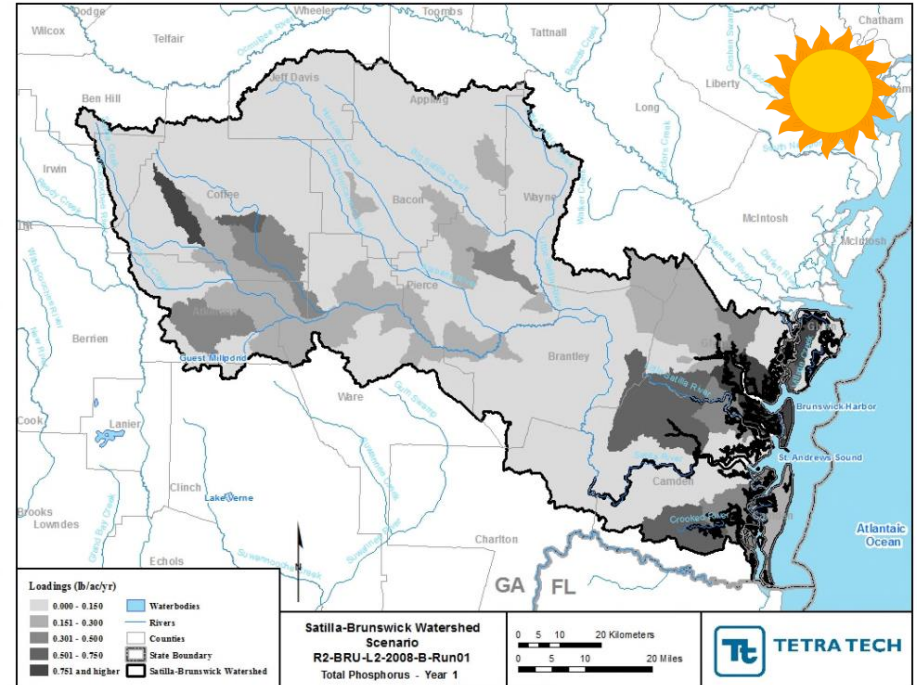
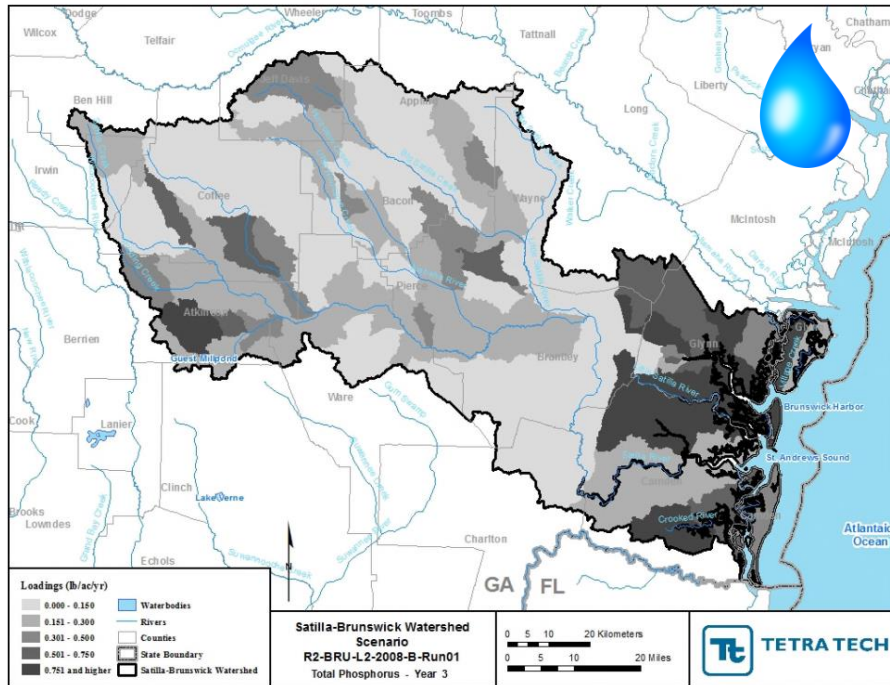


SUWANNEE BOD HEAT MAPS

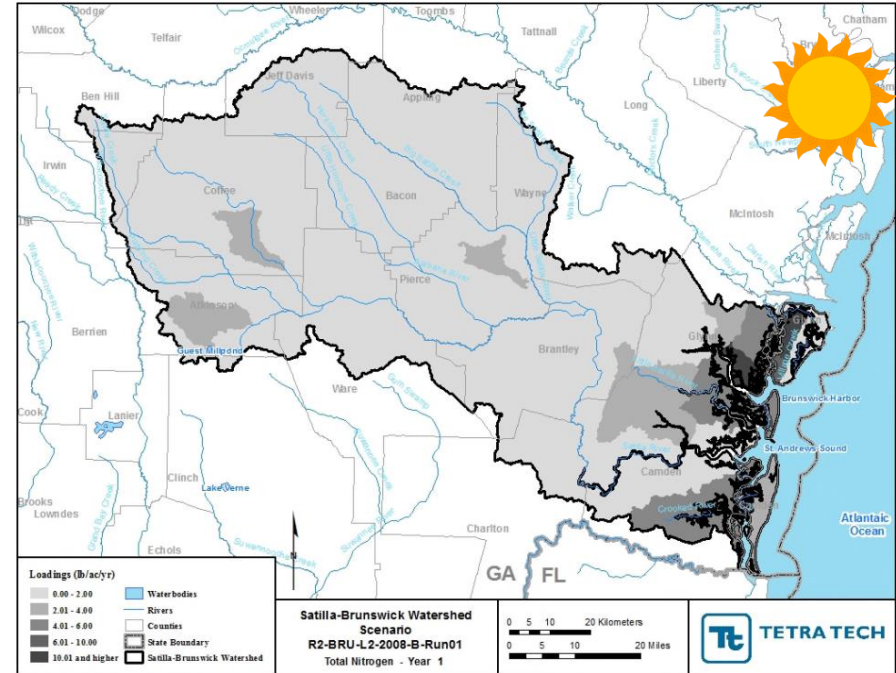
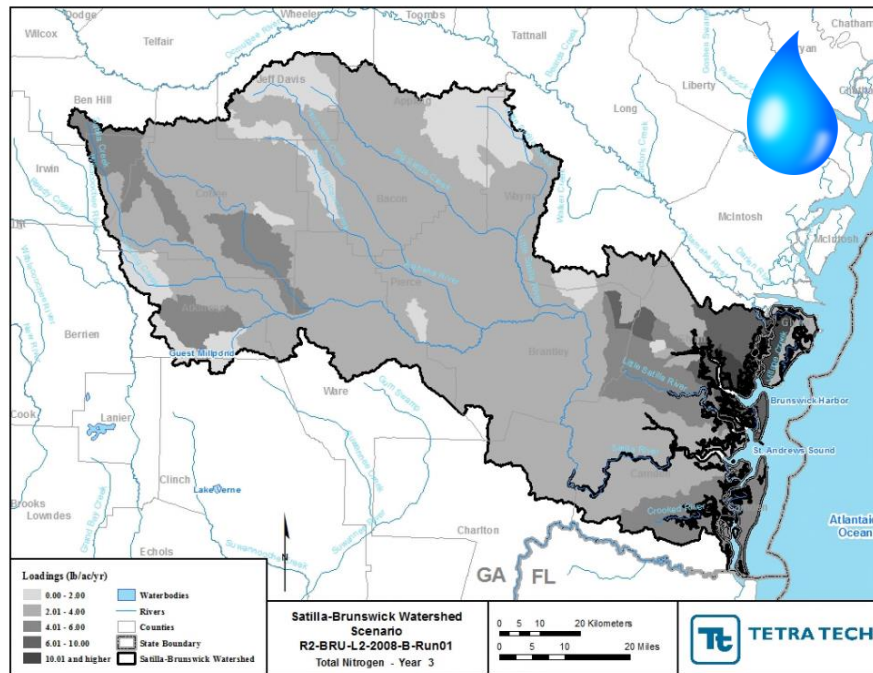


SUWANNEE STATELINE NUTRIENT LOADS (lbs/yr)

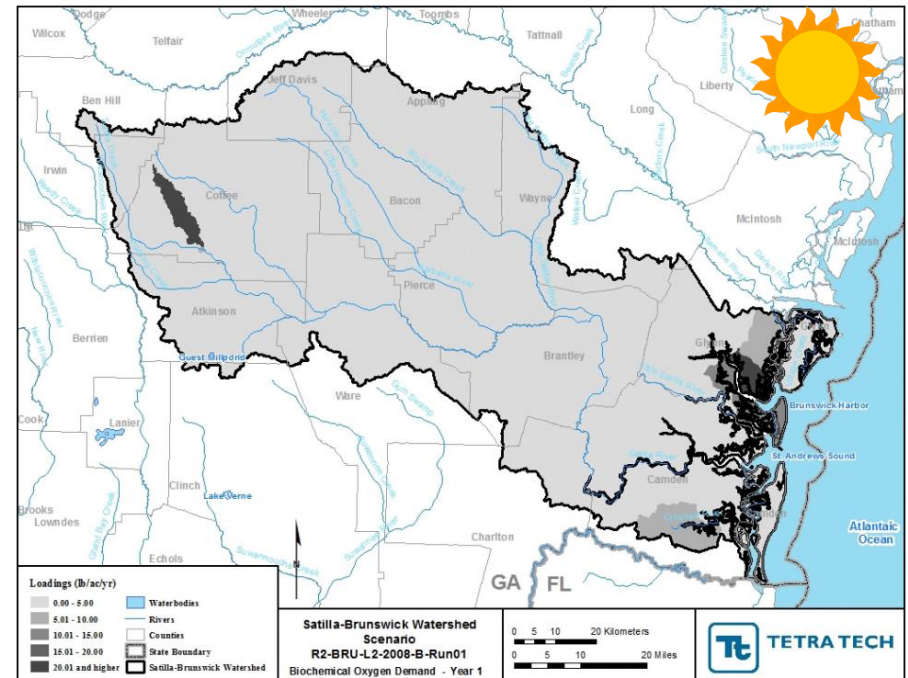
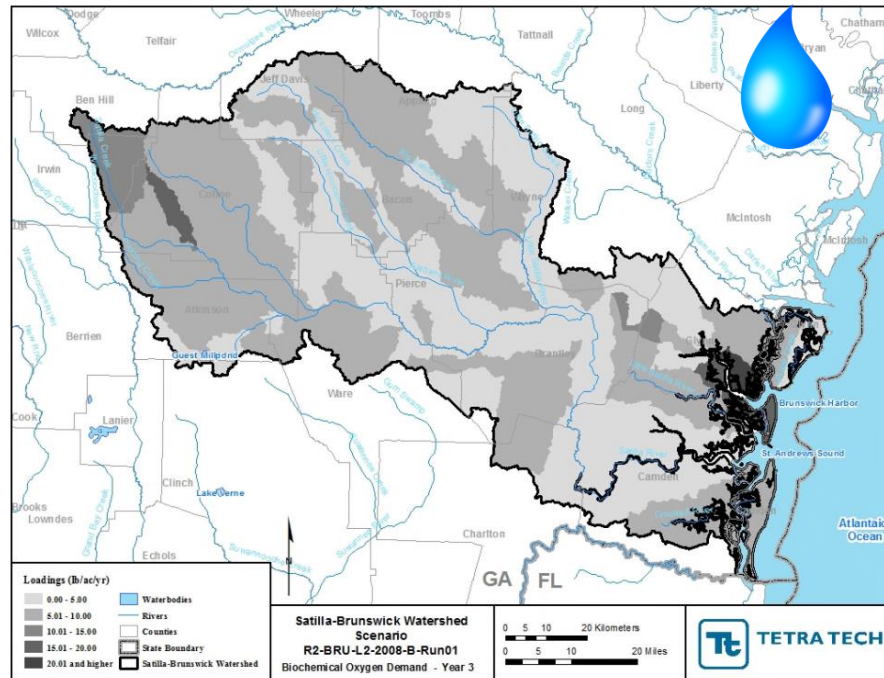
SATILLA TOTAL P HEAT MAPS



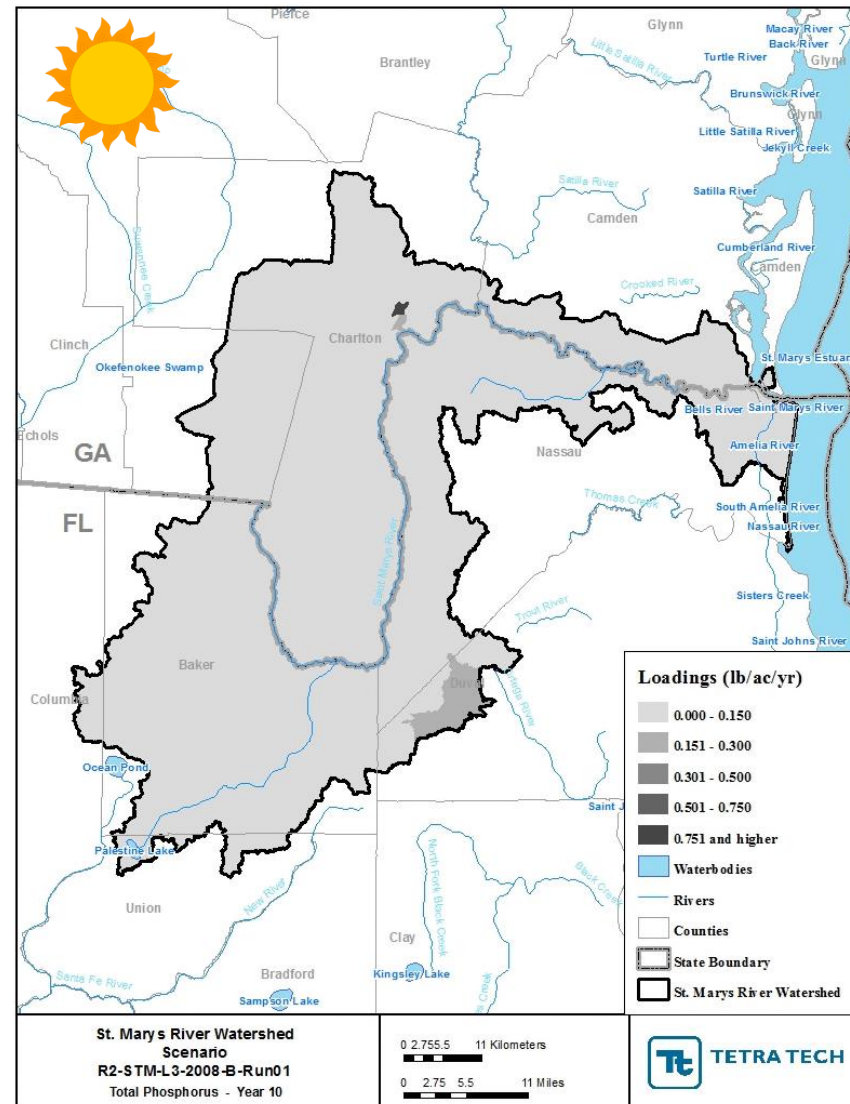
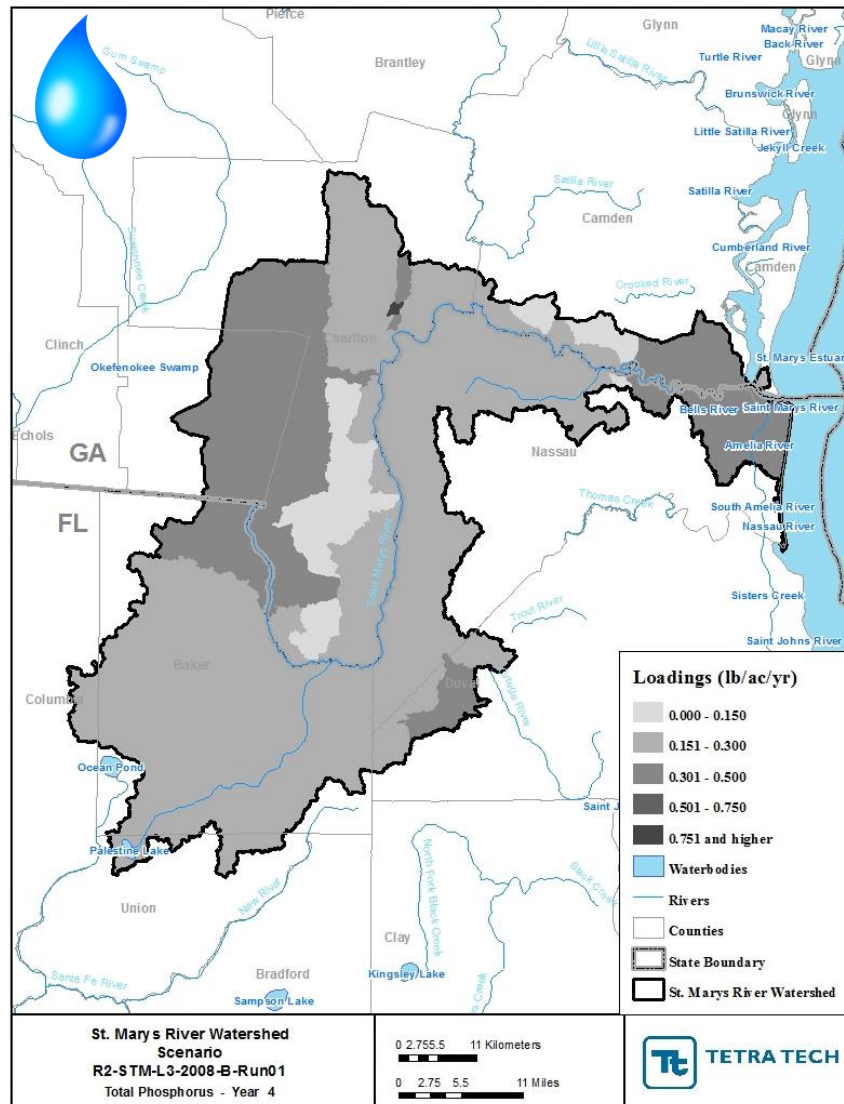
SATILLA TOTAL N HEAT MAPS



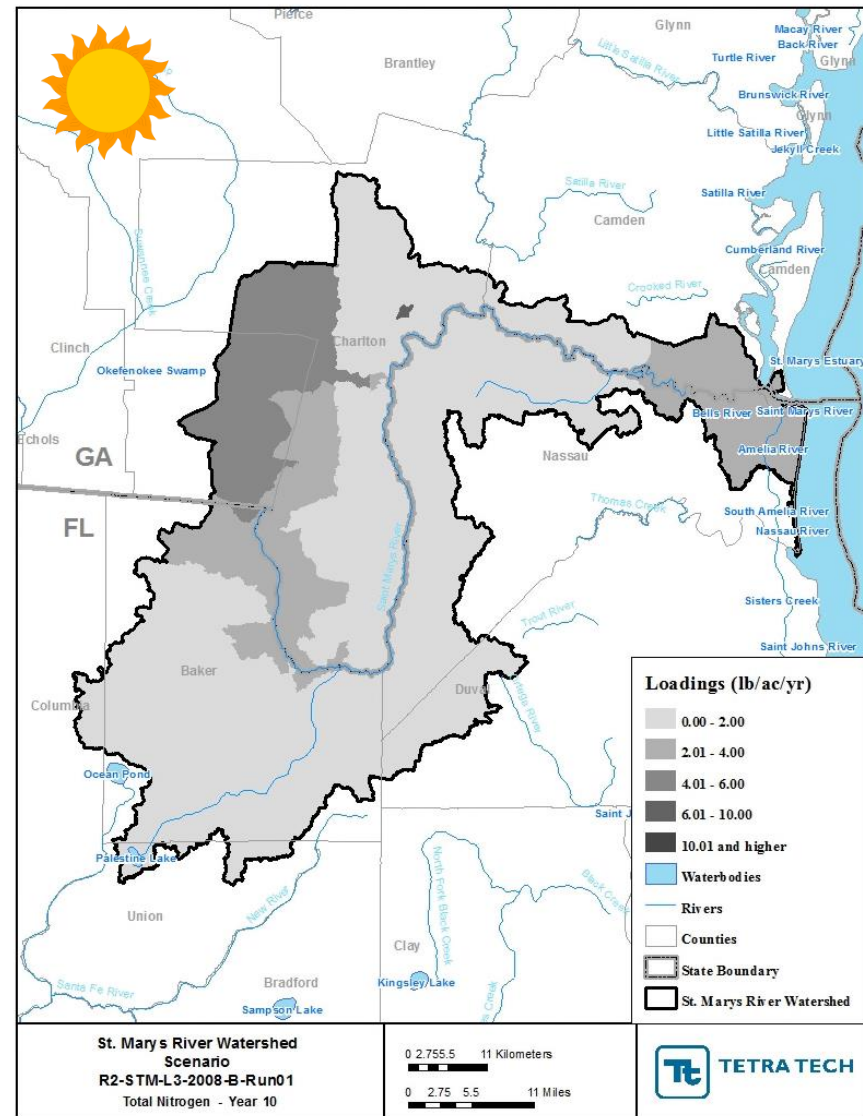
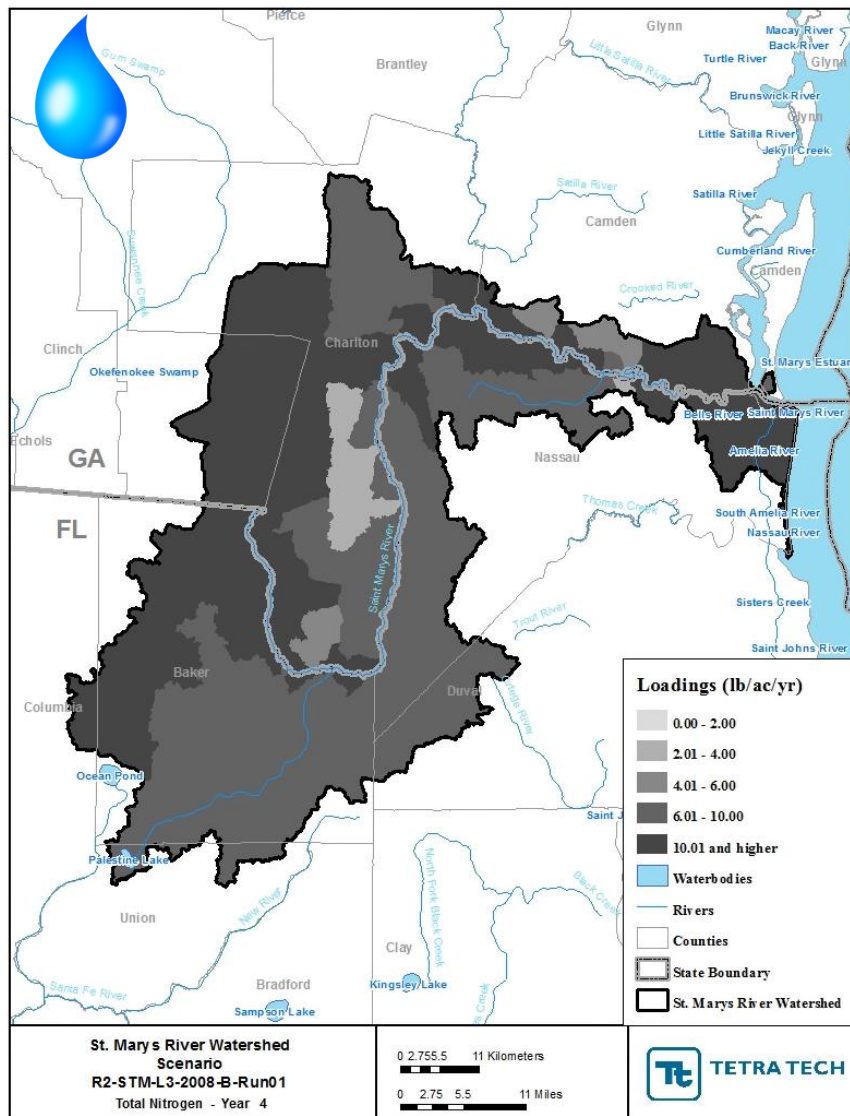
SATILLA BOD HEAT MAPS



ST MARYS TOTAL P HEAT MAPS



ST MARYS TOTAL N HEAT MAPS



ST MARYS BOD HEAT MAPS

