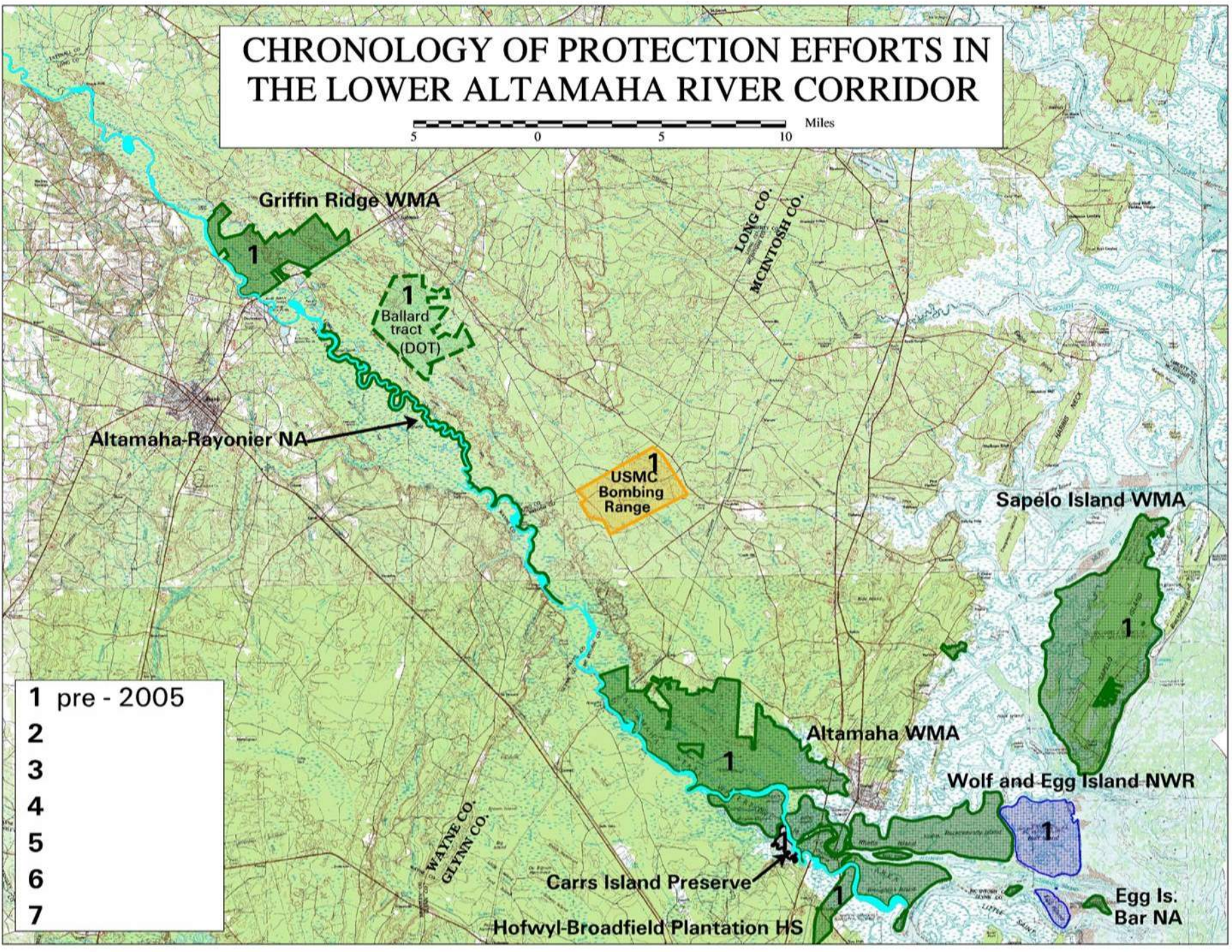




LOWER ALTAMAHA RIVER TIME LINE



CHRONOLOGY OF PROTECTION EFFORTS IN THE LOWER ALTAMAHA RIVER CORRIDOR



- 1 pre - 2005
- 2
- 3
- 4
- 5
- 6
- 7

Griffin Ridge WMA
1
Ballard tract (DOT)
Altamaha-Rayonier NA

1
USMC Bombing Range

Sapelo Island WMA

Altamaha WMA

Wolf and Egg Island NWR

Carrs Island Preserve

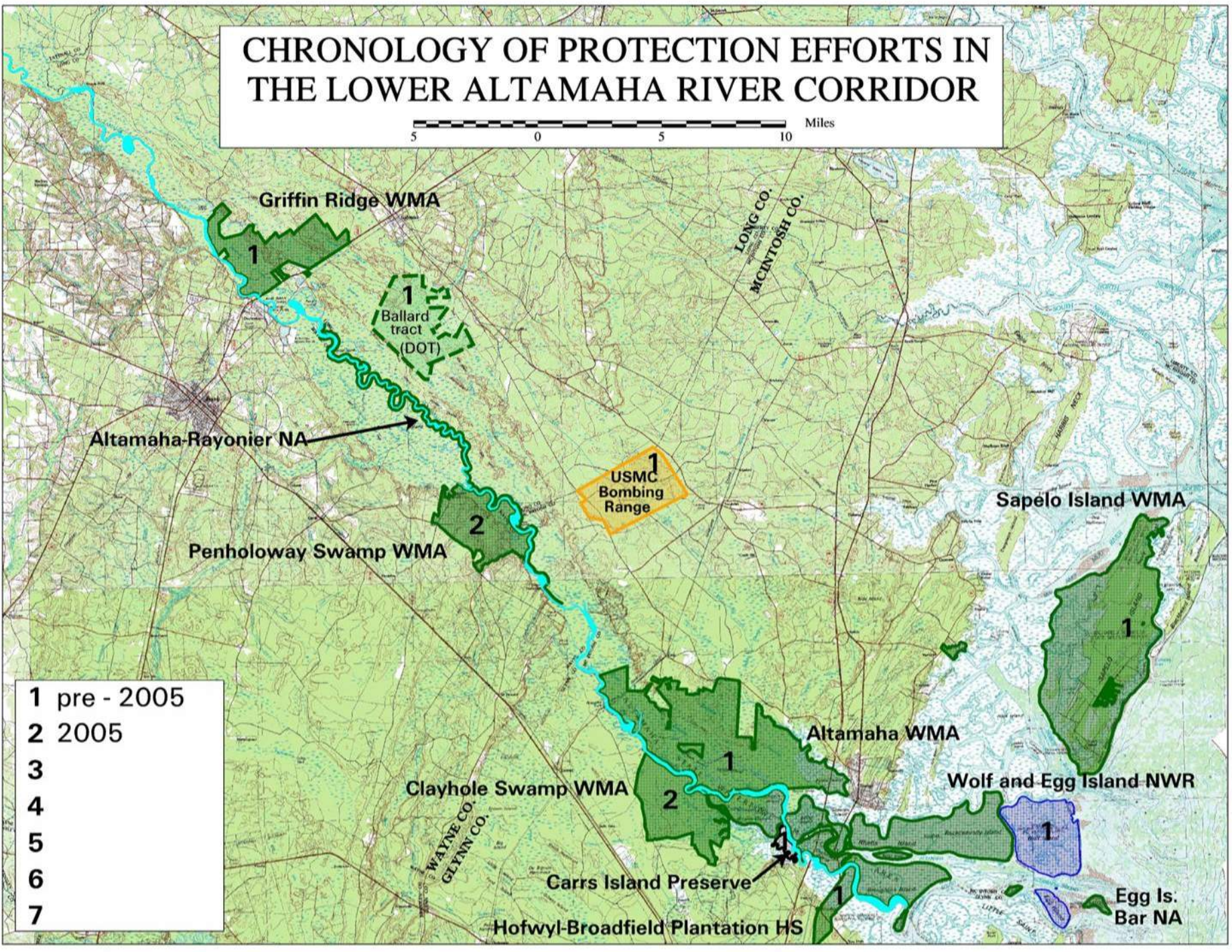
Hofwyl-Broadfield Plantation HS

Egg Is. Bar NA

LONG CO.
MCINTOSH CO.

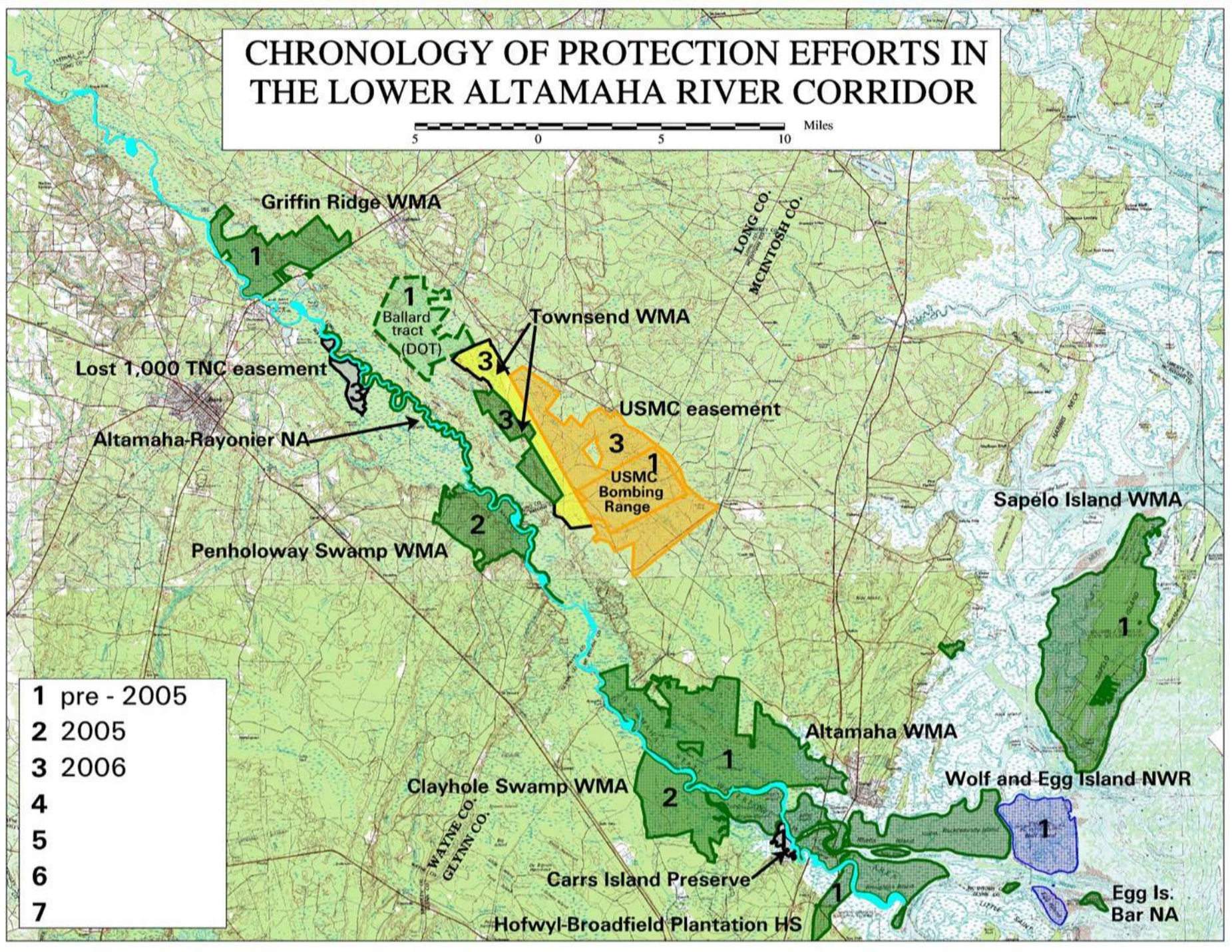
WAYNE CO.
GLENN CO.

CHRONOLOGY OF PROTECTION EFFORTS IN THE LOWER ALTAMAHA RIVER CORRIDOR



- 1 pre - 2005
- 2 2005
- 3
- 4
- 5
- 6
- 7

CHRONOLOGY OF PROTECTION EFFORTS IN THE LOWER ALTAMAHA RIVER CORRIDOR



Lost 1,000 TNC easement

Altamaha-Rayonier NA

Penholoway Swamp WMA

Griffin Ridge WMA

Ballard tract (DOT)

Townsend WMA

USMC easement

USMC Bombing Range

Sapelo Island WMA

Altamaha WMA

Wolf and Egg Island NWR

Clayhole Swamp WMA

Carrs Island Preserve

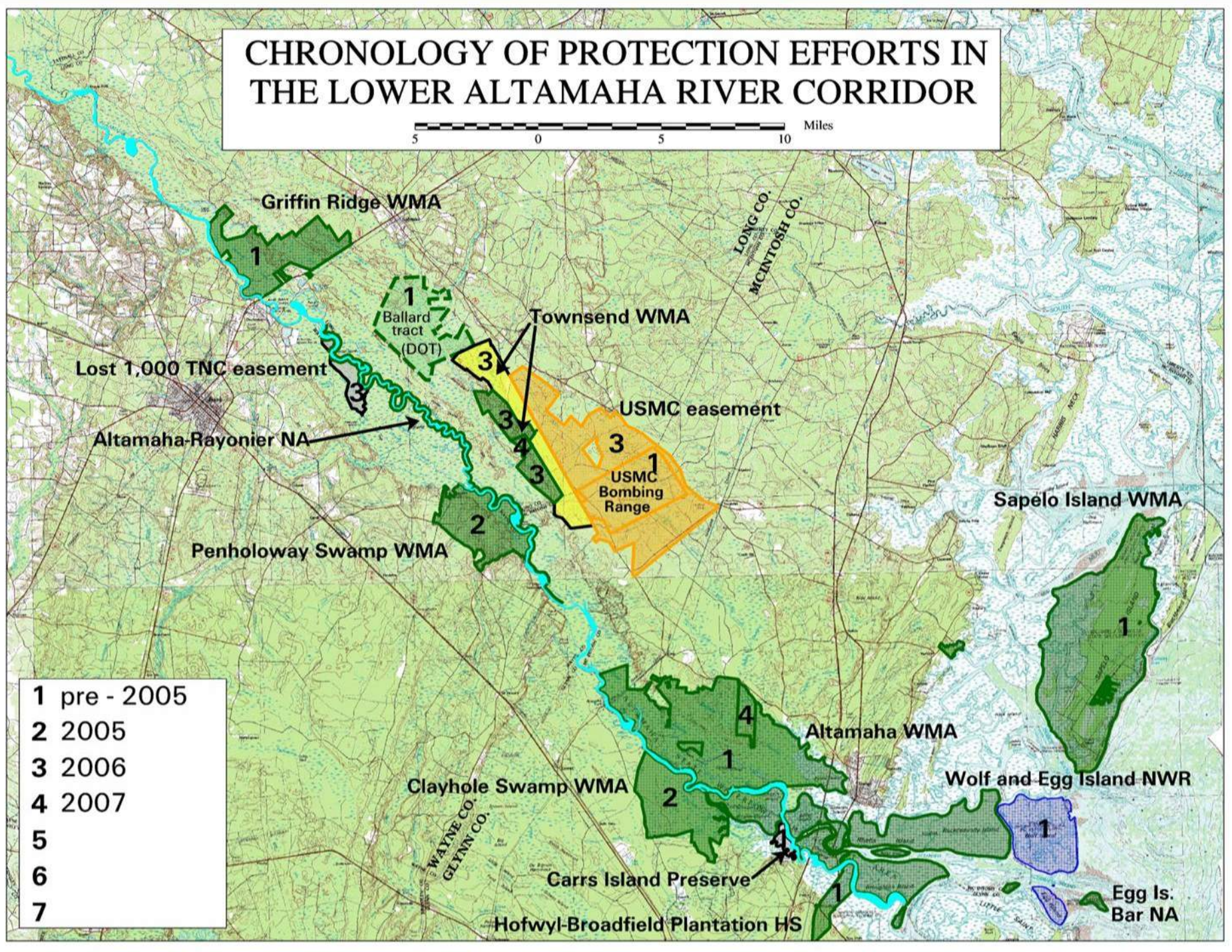
Hofwyl-Broadfield Plantation HS

Egg Is. Bar NA

LONG CO.
MCINTOSH CO.

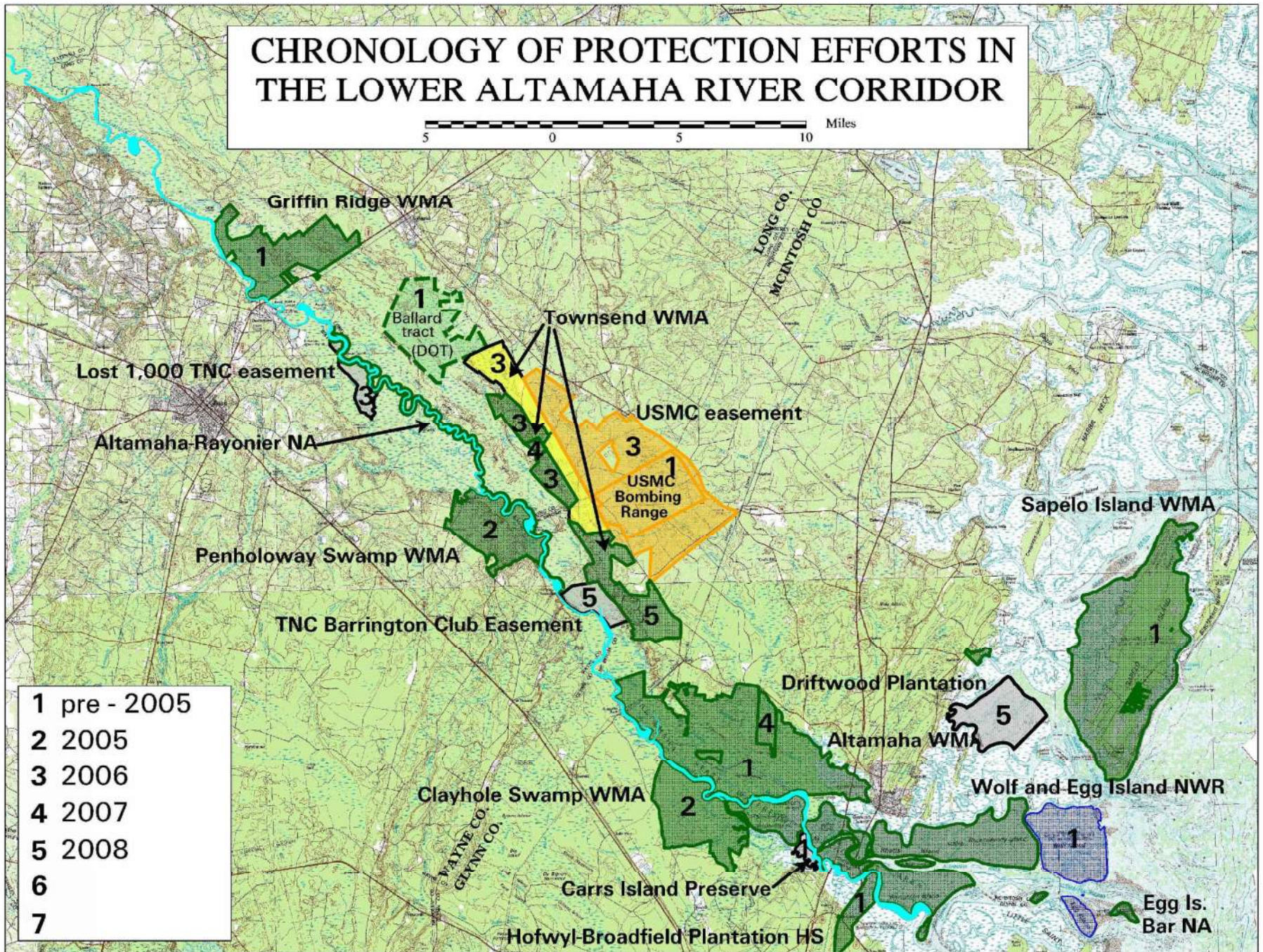
WAYNE CO.
GLENN CO.

CHRONOLOGY OF PROTECTION EFFORTS IN THE LOWER ALTAMAHA RIVER CORRIDOR

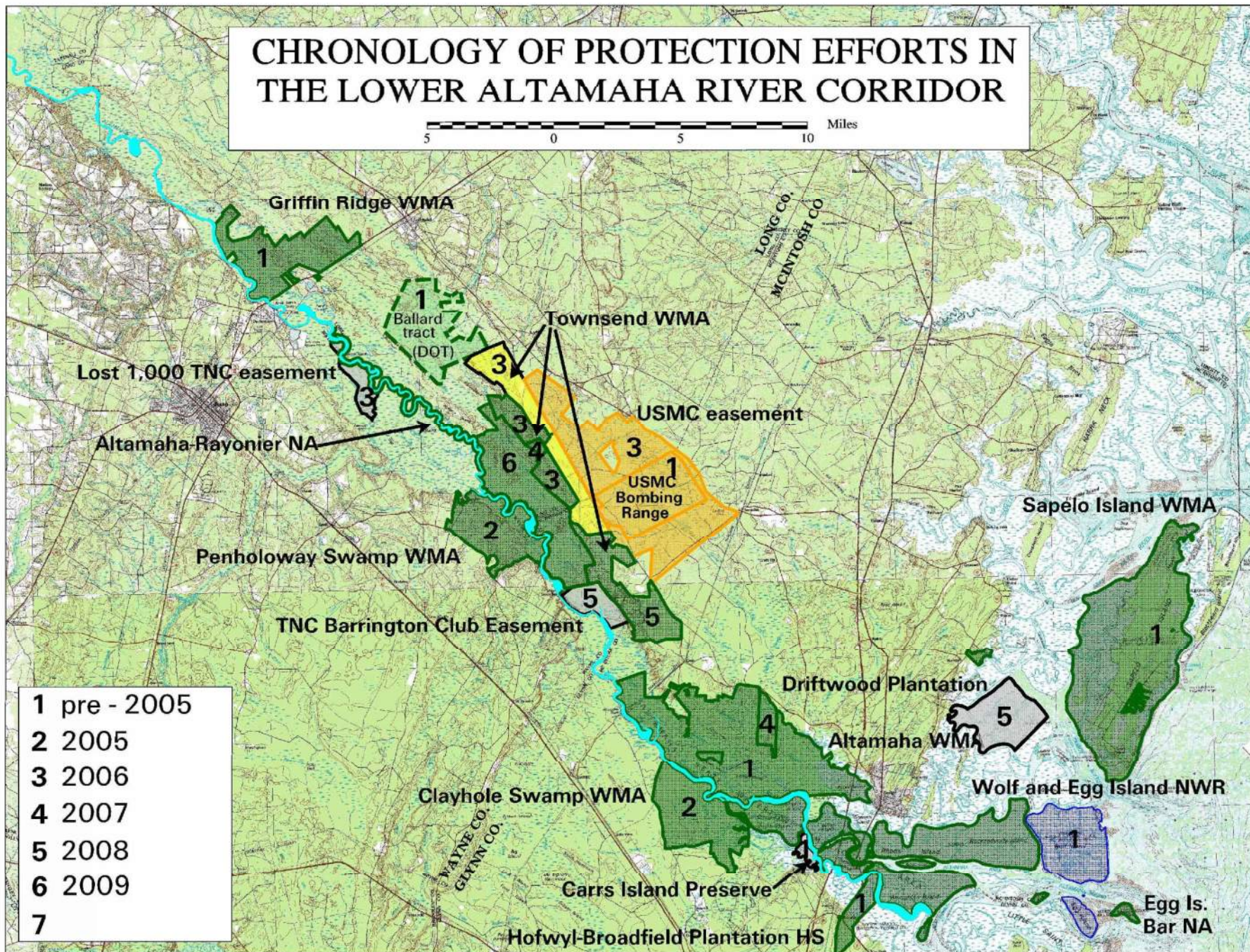


- 1 pre - 2005
- 2 2005
- 3 2006
- 4 2007
- 5
- 6
- 7

CHRONOLOGY OF PROTECTION EFFORTS IN THE LOWER ALTAMAHA RIVER CORRIDOR

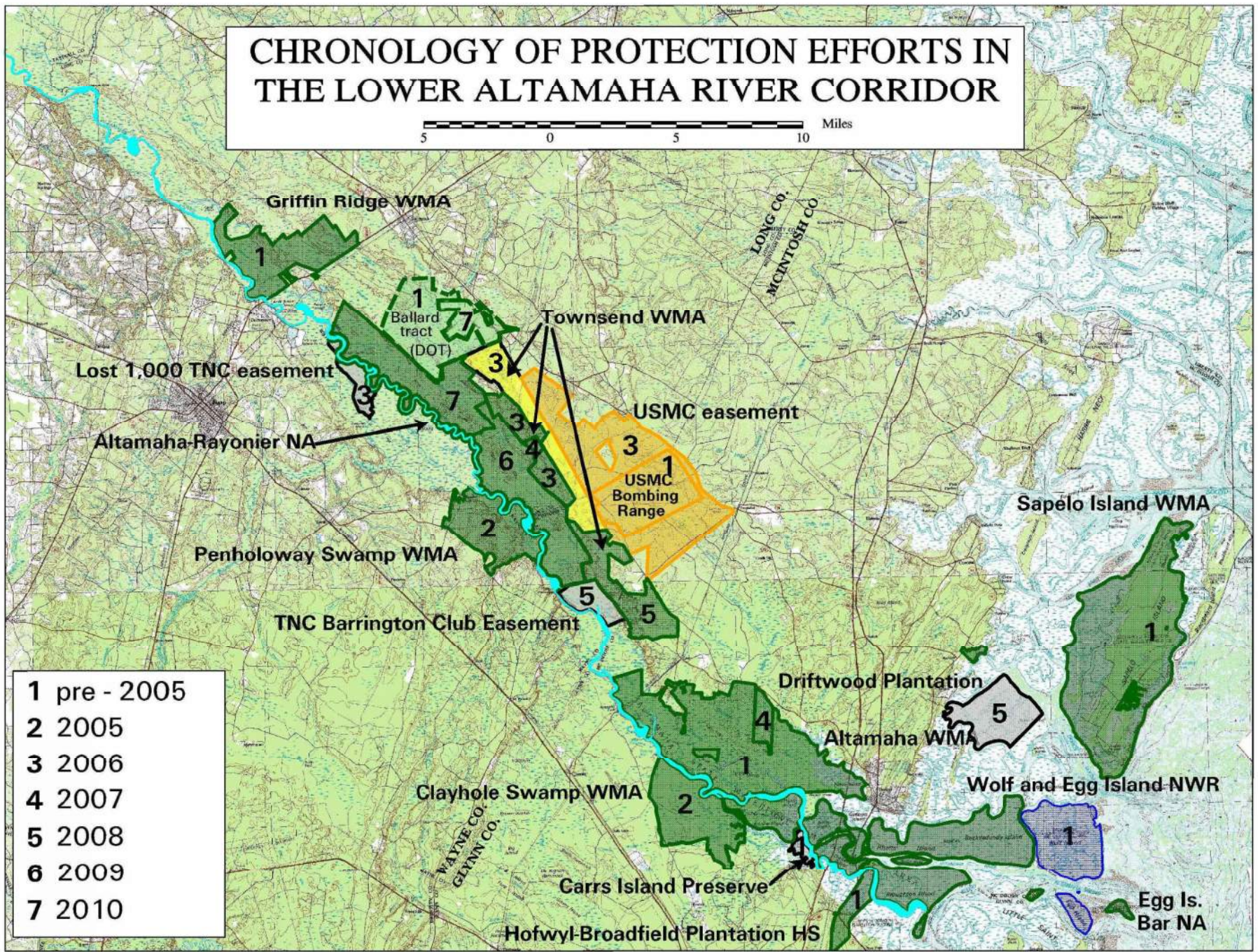


CHRONOLOGY OF PROTECTION EFFORTS IN THE LOWER ALTAMAHA RIVER CORRIDOR

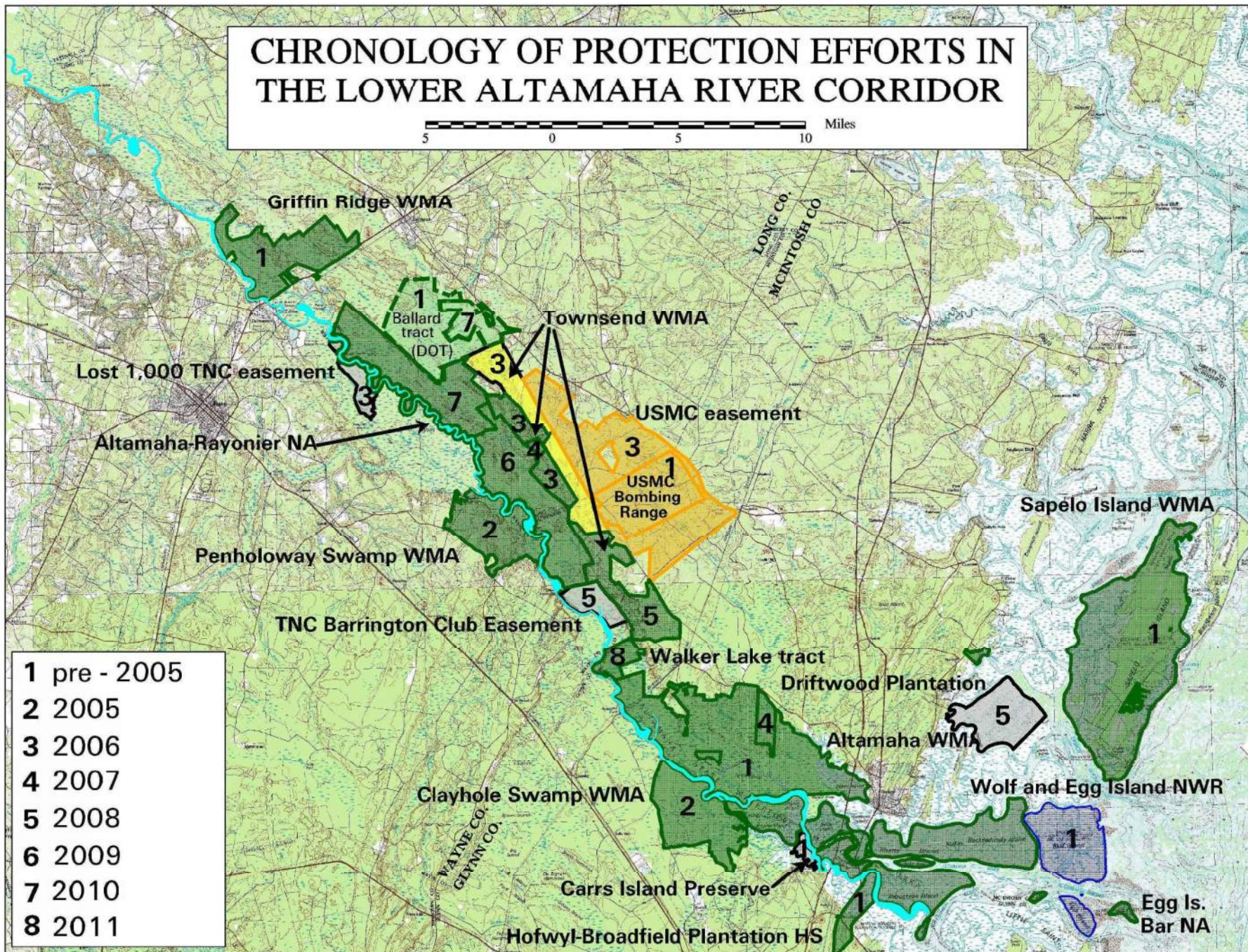


CHRONOLOGY OF PROTECTION EFFORTS IN THE LOWER ALTAMAHA RIVER CORRIDOR

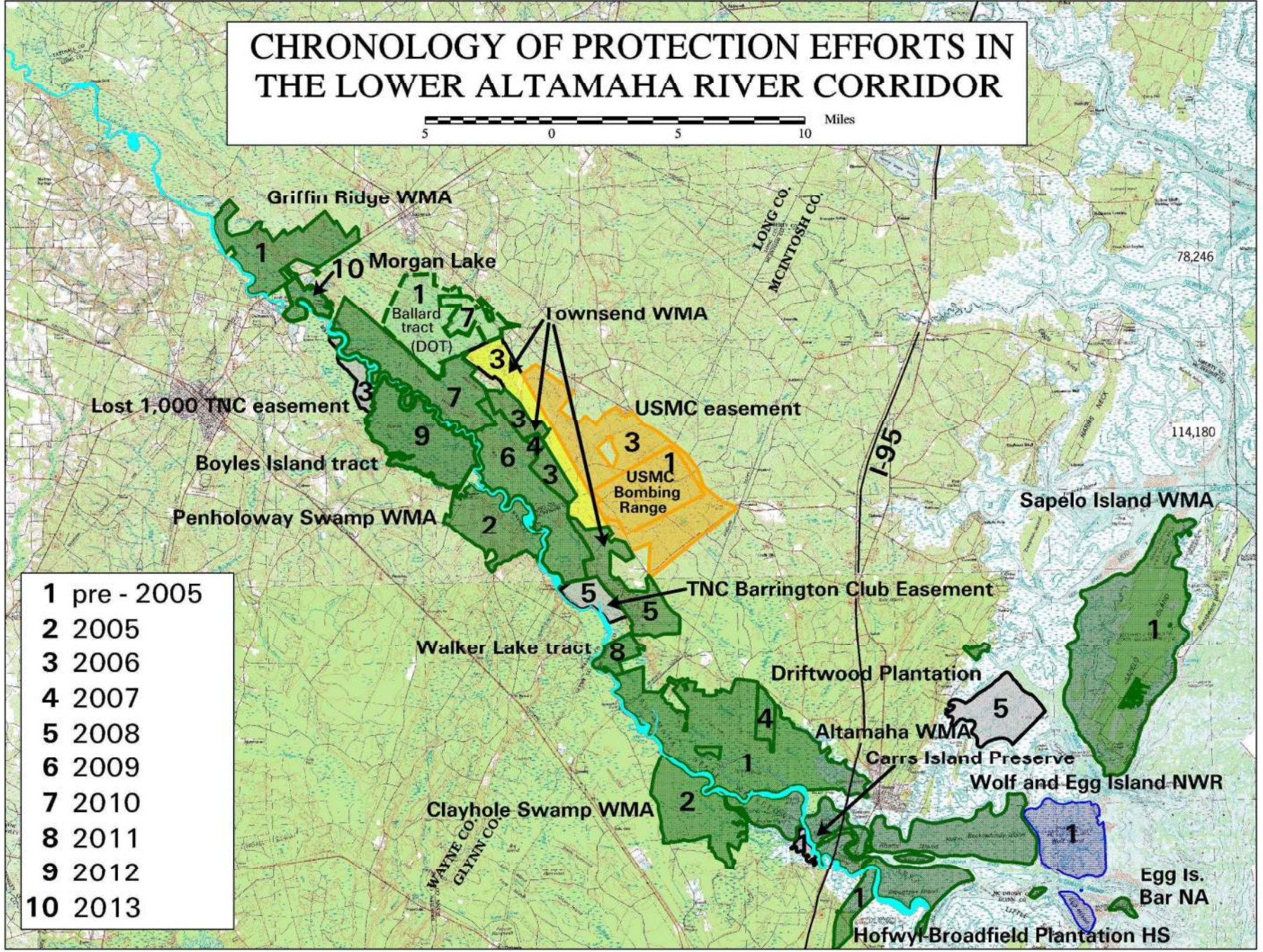
5 0 5 10 Miles



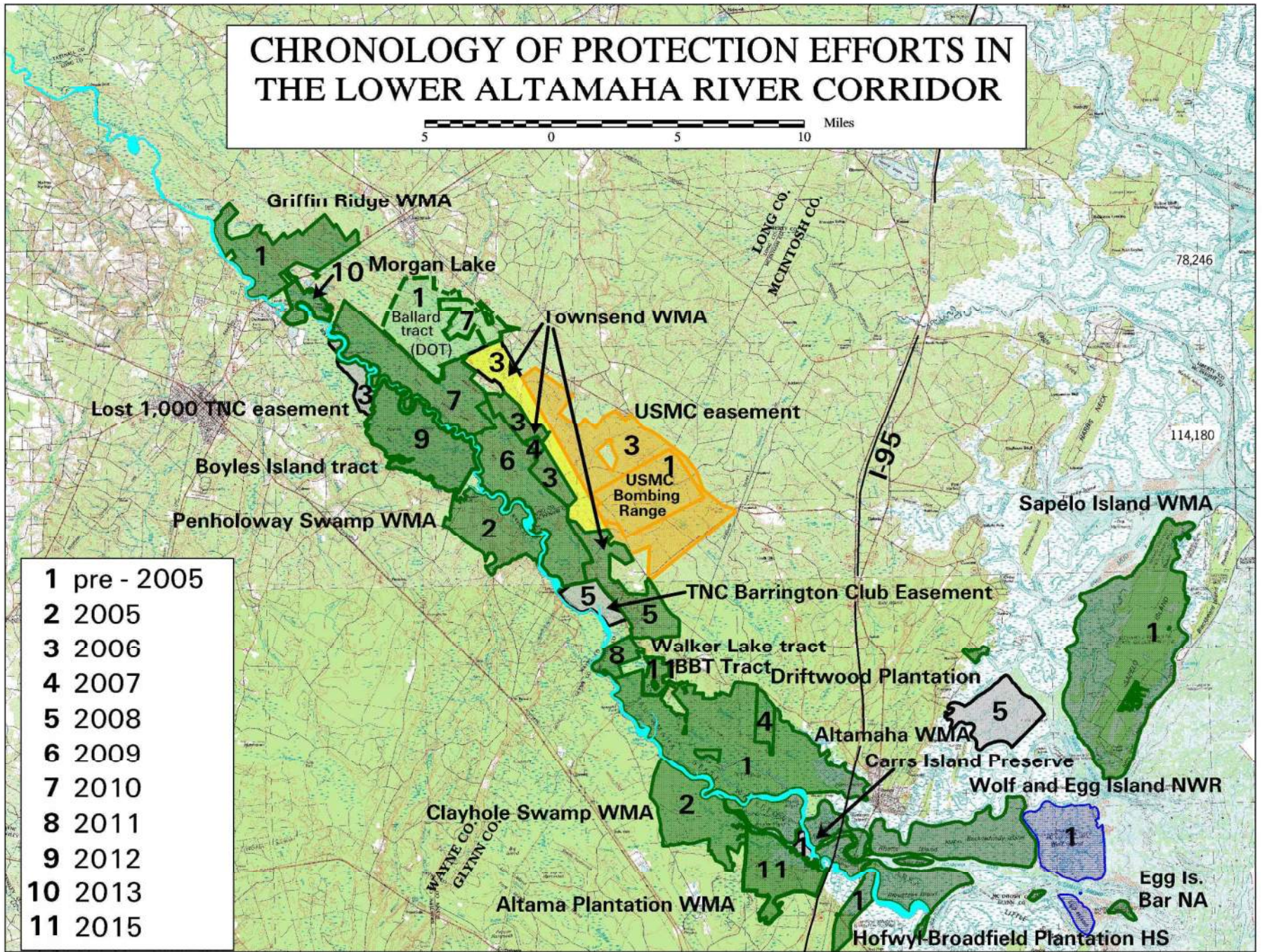
CHRONOLOGY OF PROTECTION EFFORTS IN THE LOWER ALTAMAHA RIVER CORRIDOR



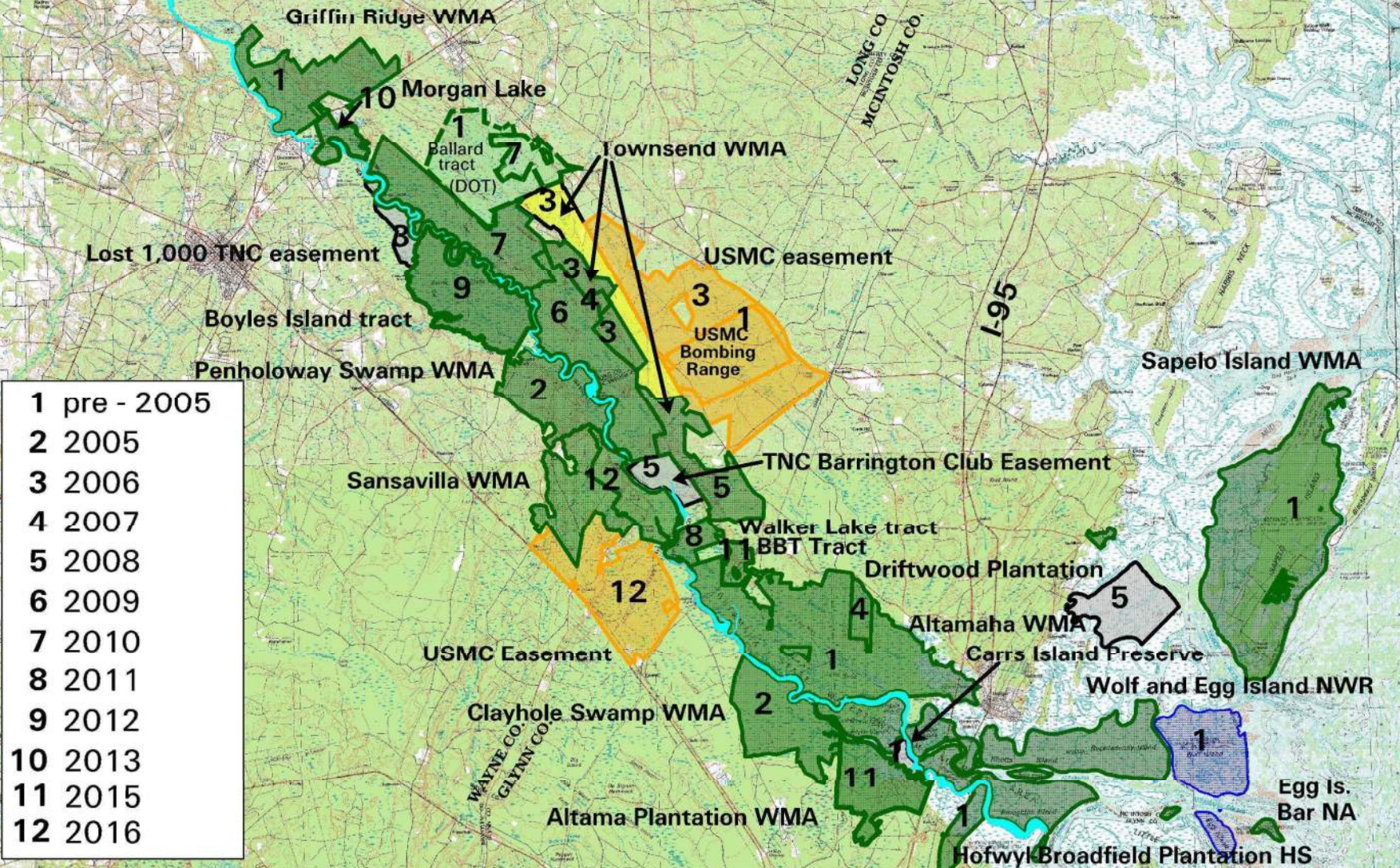
CHRONOLOGY OF PROTECTION EFFORTS IN THE LOWER ALTAMAHA RIVER CORRIDOR



CHRONOLOGY OF PROTECTION EFFORTS IN THE LOWER ALTAMAHA RIVER CORRIDOR

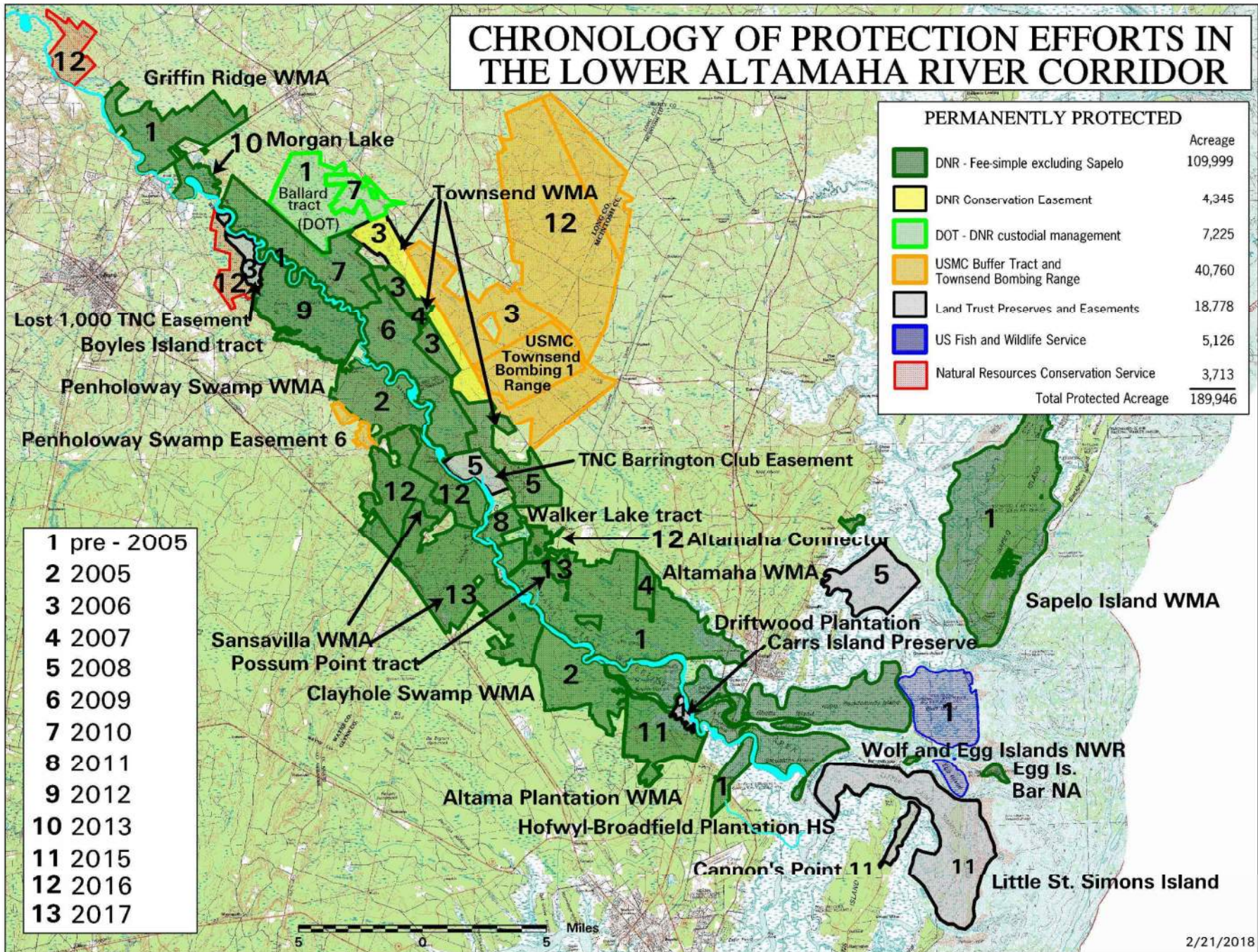


CHRONOLOGY OF PROTECTION EFFORTS IN THE LOWER ALTAMAHA RIVER CORRIDOR



- 1 pre - 2005
- 2 2005
- 3 2006
- 4 2007
- 5 2008
- 6 2009
- 7 2010
- 8 2011
- 9 2012
- 10 2013
- 11 2015
- 12 2016

CHRONOLOGY OF PROTECTION EFFORTS IN THE LOWER ALTAMAHA RIVER CORRIDOR



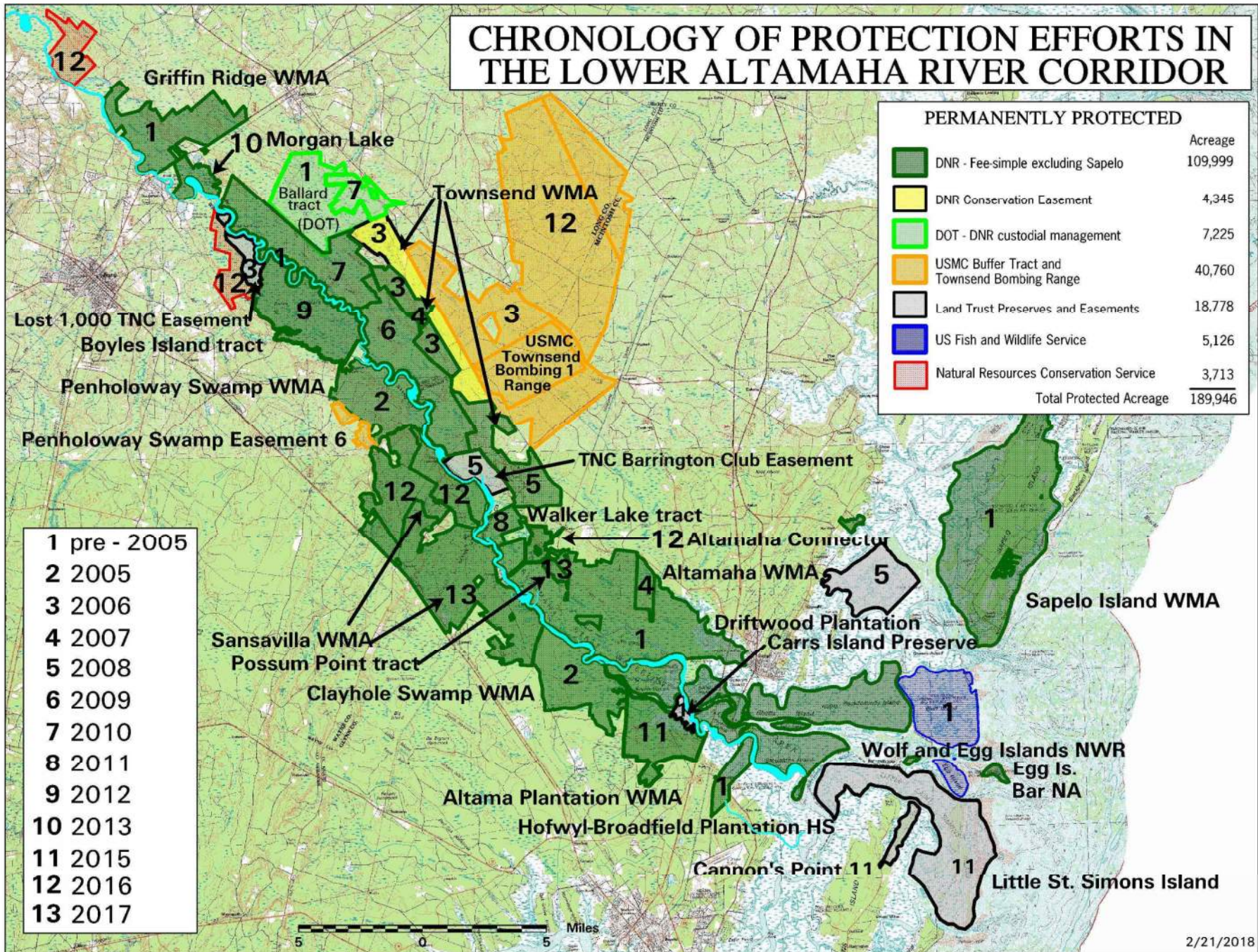
CHRONOLOGY OF PROTECTION EFFORTS IN THE LOWER ALTAMAHA RIVER CORRIDOR

5 0 5 10 Miles



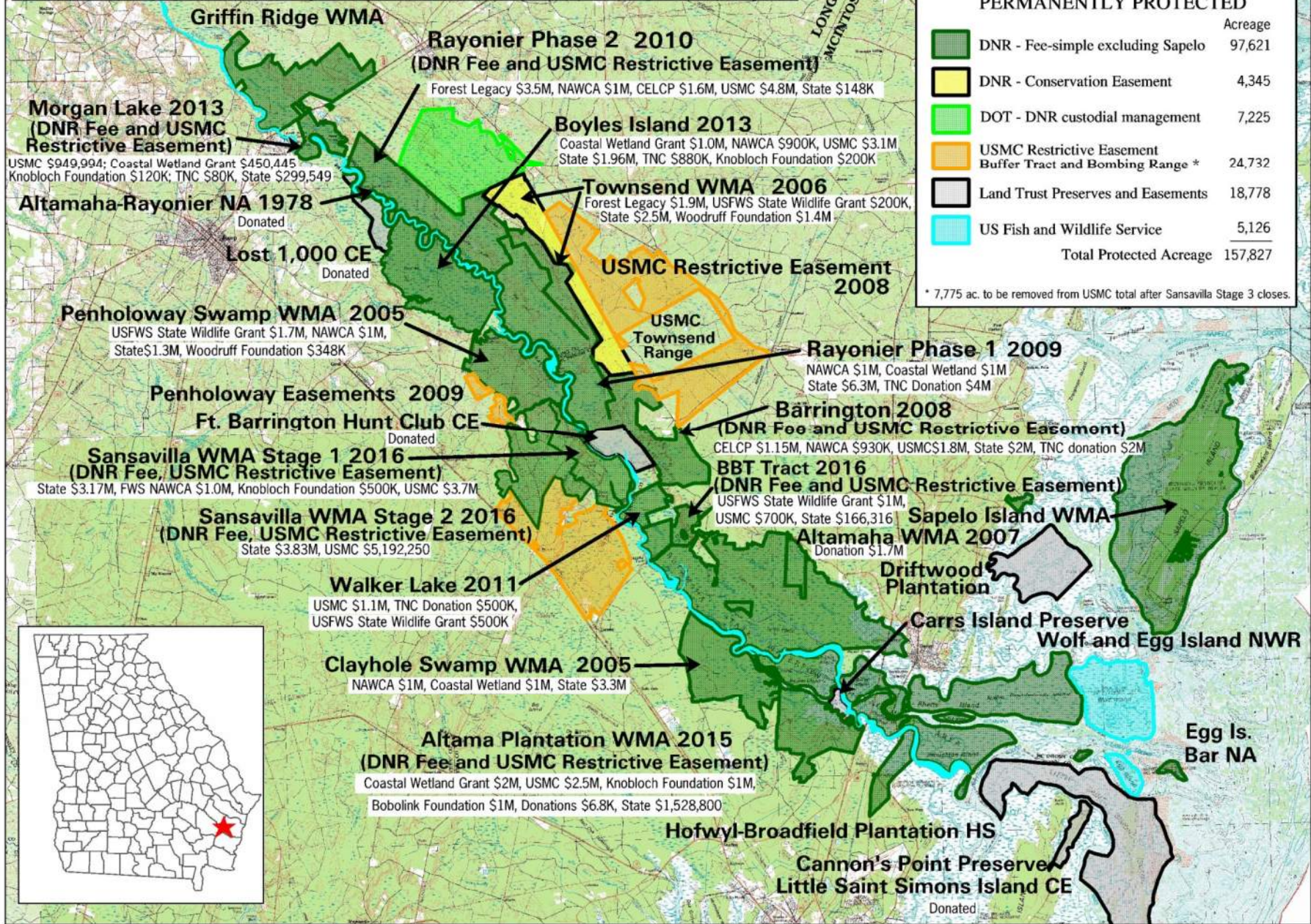
- 1 pre - 2005
- 2
- 3
- 4
- 5
- 6
- 7

CHRONOLOGY OF PROTECTION EFFORTS IN THE LOWER ALTAMAHA RIVER CORRIDOR



LOWER ALTAMAHA RIVER CORRIDOR FUNDING SOURCES

10 0 10 Miles 1/25/2017



PERMANENTLY PROTECTED	
	Acreage
DNR - Fee-simple excluding Sapelo	97,621
DNR - Conservation Easement	4,345
DOT - DNR custodial management	7,225
USMC Restrictive Easement Buffer Tract and Bombing Range *	24,732
Land Trust Preserves and Easements	18,778
US Fish and Wildlife Service	5,126
Total Protected Acreage	
157,827	

* 7,775 ac. to be removed from USMC total after Sansavilla Stage 3 closes.

