



Georgia's Wildlife Resources Division

Department of Natural Resources

Department Structure



Our Mission

To conserve, enhance and promote Georgia's fish and wildlife resources and outdoor heritage through science-driven research, management, regulation, and education.

Our Primary Customers

- **1.2 million** resident anglers in Georgia
- **630,000** people annually hunt in Georgia
- **2.4 million** people annually participate in wildlife-watching activities.
- **660,000** target shooters in Georgia

The takeaway: Hunters and anglers spend \$3.2 billion per year and support 39,640 jobs in Georgia.

Funding for Hunters and Anglers

- Wildlife conservation predominantly is paid for by hunters and anglers through license sales and equipment purchases
- If you enjoy wildlife watching, thank hunters and anglers for conserving all wildlife through their support of sportfish and wildlife restoration funds
- Hunters and anglers have and continue to pay more toward conservation than all other conservation groups combined!



Division Structure

Comprises three sections:

- Game Management
- Fisheries Management
- Nongame Conservation



Game Management

Provides science based management, conservation and protection of Georgia's wildlife and habitats for hunting, trapping and other compatible wildlife related recreation and education.



Game Management

Programs

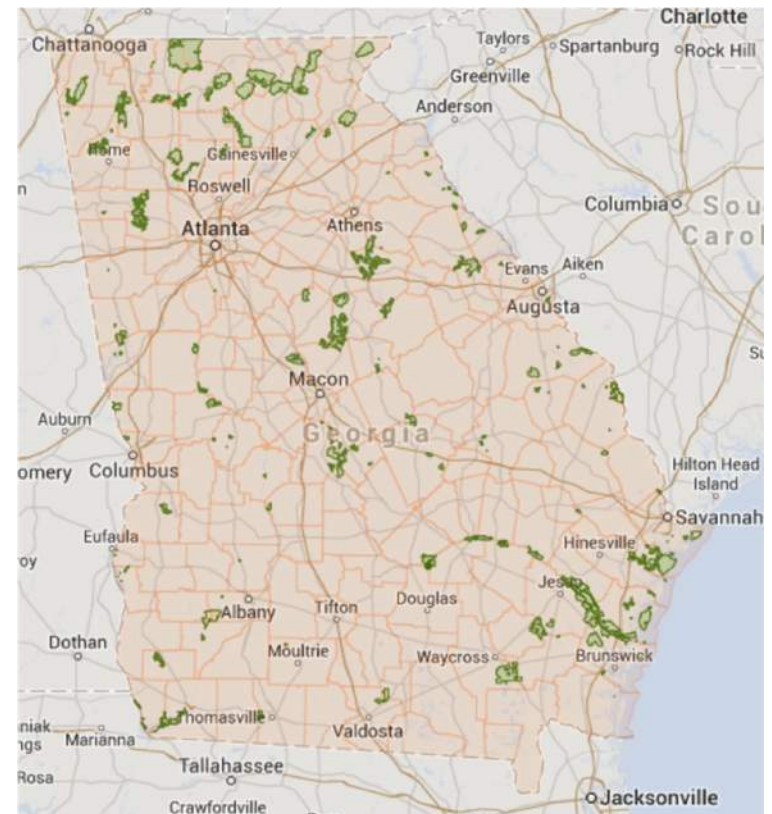
- Wildlife Management Areas (WMA)
 - Barrier Island Operations
- Technical Assistance
- Research, Survey & Monitoring
- Hunting Regulations
- Hunter Education

Sub Programs

- Forest Management
- Shooting Sports
- Private Lands
 - Bobwhite Quail Initiative
 - Farm Bill programs

Wildlife Management Areas (WMAs)

- 104 WMAs
- Over 1 million acres of land
- At least one located within an hour of any location in Georgia
- Great hunting and other wildlife-related recreation at unbeatable price



Altamaha River Corridor WMAs NORTH

- 4 WMAs
- Altamaha, Griffin Ridge, Morgan Lake, Townsend (North, South, Pine Island, Buck Island)
- 58,872 acres of land
 - 6 campgrounds, 1 boat ramp
- Turkey (quota, general), deer (early youth, early rifle, deer-dog), dove fields, fishing access



Altamaha River Corridor WMAs SOUTH

- 5 WMAs
- Altama Plantation, Clayhole Swamp, Penholoway Swamp, Rayonier Corridor Lands, Sansavilla
- 39,995 acres of land
 - 1 camp, 3 boat ramps
- Turkey, deer (quota, early youth, early rifle), small game fields, dove fields, fishing access



Altamaha Waterfowl Management Area

- Butler, Champney and Rhett's Islands
- 11,402 acres of land
 - 3,200 acres of impoundments
 - 1 camp, 2 boat ramps, kayak launch
- Specialize in waterfowl, shorebird, wading bird and other migratory species
- Quota and general access waterfowl hunts, dove, snipe, marsh rabbits, rails, alligator, fishing, crabbing, shrimping



Want to Know More?

- www.georgiawildlife.com
- www.facebook.com/WildlifeResourcesDivisionGADNR
- www.instagram.com/GeorgiaWildlife
- www.twitter.com/GeorgiaWild
- Purchase a hunting/fishing license

Thank you!

