



# Georgia's State Water Plan

**Regional Water Plan Review and Revision  
Middle Ocmulgee Water Planning Council  
November 17, 2016**

[www.georgiawaterplanning.org](http://www.georgiawaterplanning.org)

# Middle Ocmulgee Region Council Meeting 3



## *Meeting Objectives:*

- 1) Identify any additional Management Practices to recommend updating
- 2) Identify any additional Joint efforts/Council coordination elements
- 3) Report Back to Joint Meeting
- 4) Conduct Council Meeting Business

1:15 pm – 2:20 pm

### **Discussion**

- **Breakout Sessions** debrief -- what are implications for Plan updates?
- **Brief Recap of Plan Elements**
- **Management Practices Identified for Review and Revision**
- **Council Coordination Recommendations**
- **Report Back**

2:00 pm – 2:20 pm

### **Council Meeting Business**

- Approve meeting summary from Council Meeting 2
- 319(h) Grant Project update/Seed Grant Updates
- Potential Office Hours/Subcommittee conference call
- New Business

2:20 - 2:30 pm

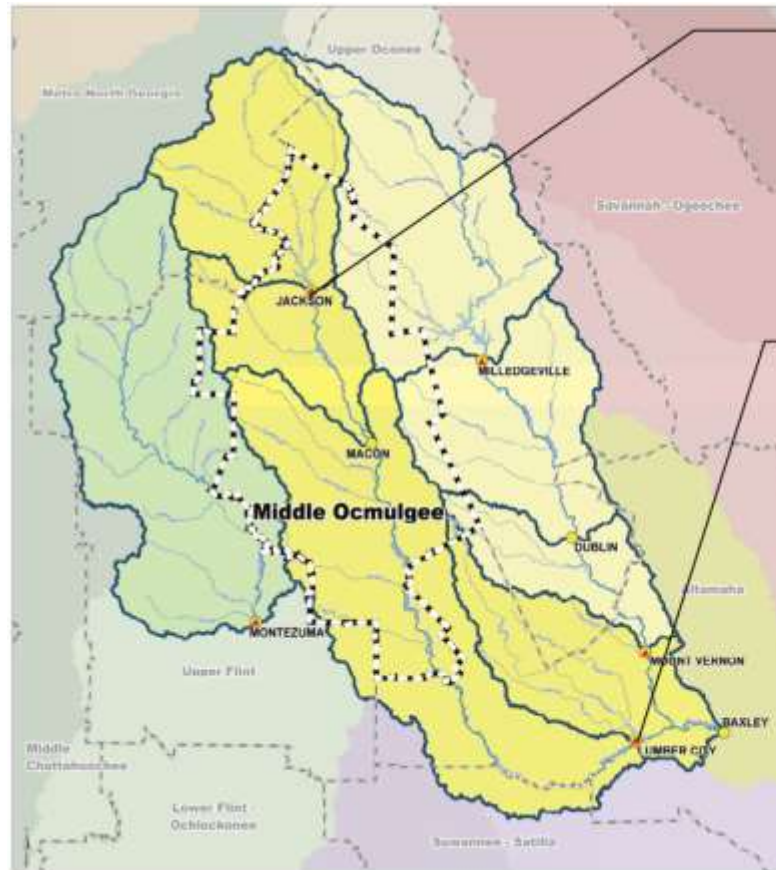
### **Public Comments**

# Middle Ocmulgee Region Council Meeting 3

- Breakout Session Debrief:
  - What are first thoughts?
  - Any questions or concerns about the information?
  - Any new implications for Plan updates?
  - What additional information would assist you in refining selection of management practices for next meeting?
- Resource Assessment Summary: Surface Water Availability, Water Quality/Assimilative Capacity, Groundwater

# Summary of Surface Water Resource Assessment

- Round 2 Current Condition Results
- Jackson and Lumber City Planning Nodes
- No forecasted surface water gaps



## Jackson Node:

- Middle Ocmulgee counties with withdrawal above node: Butts, Jasper, and Newton (excluding Metro District counties)
- 2050 Demand: 52.9 MGD (only includes counties within the Middle Ocmulgee Region)
- **No gap at planning node due to existing reservoir**

## Lumber City Node:

- Middle Ocmulgee counties with withdrawal above node: Bibb, Butts, Crawford, Houston, Jasper, Jones, Lamar, Monroe, Pulaski, Peach, and Twiggs
- 2050 Demand: 136.7 MGD (only includes counties within the Middle Ocmulgee Region)
- **No gap at planning node due to existing reservoir**

\* Denotes node outside of region

# Middle Ocmulgee Gap Summary: Surface Water Supply

- Surface Water Resource Assessment Summary:
  - No potential gaps at the Jackson and Lumber City nodes
- Management Practices Considerations:
  - Continue to support water conservation
  - Review Priority Management Practices

# Middle Ocmulgee Gap Summary: Groundwater

- Groundwater Resource Assessment:
  - No major change in groundwater assessment
- Management Practices Considerations:
  - Continue water conservation practices
  - Review Priority Management Practices

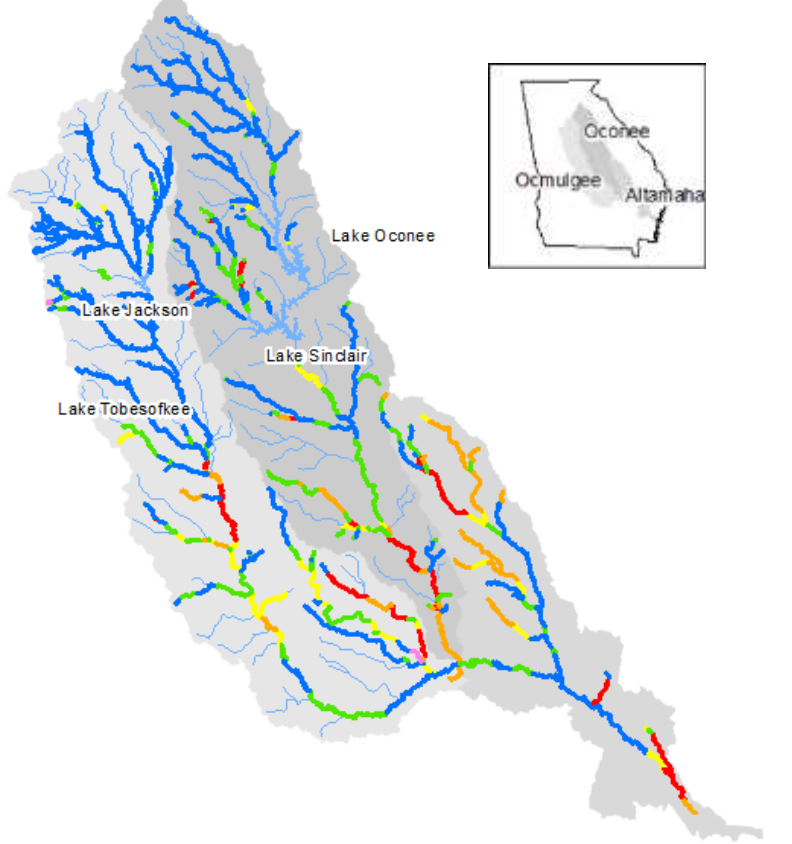
# Surface Water Quality/Assimilative Capacity Gaps

- Assimilative Capacity Assessment Round 2 Results
  - DOSAG & GA Estuary Models
  - 2000 thru 2012 (2012 is critical dry year)
  - Assimilative capacity model for DO shows improvement over planning horizon due to tighter permit limits.

# Surface Water Quality/Assimilative Capacity

River Basin	Number of Permitted Facilities	Number of Facilities with Increase Permitted Flow in 2050	Number of Facilities with Tighter BOD limits in 2050	Number of Facilities with New or Tighter NH <sub>3</sub> limits in 2050	Number of Facilities with New or Tighter DO limits in 2050
Savannah	63	26	34	50	16
Ogeechee	27	9	2	21	1
Oconee	53	21	18	38	10
Ocmulgee	48	11	25	37	1
Altamaha	15	3	8	11	3
Suwannee	29	7	10	26	10
Satilla	17	4	7	10	8
St Marys	8	2	4	3	4
Total	260	83	108	196	53





## Current Permitted

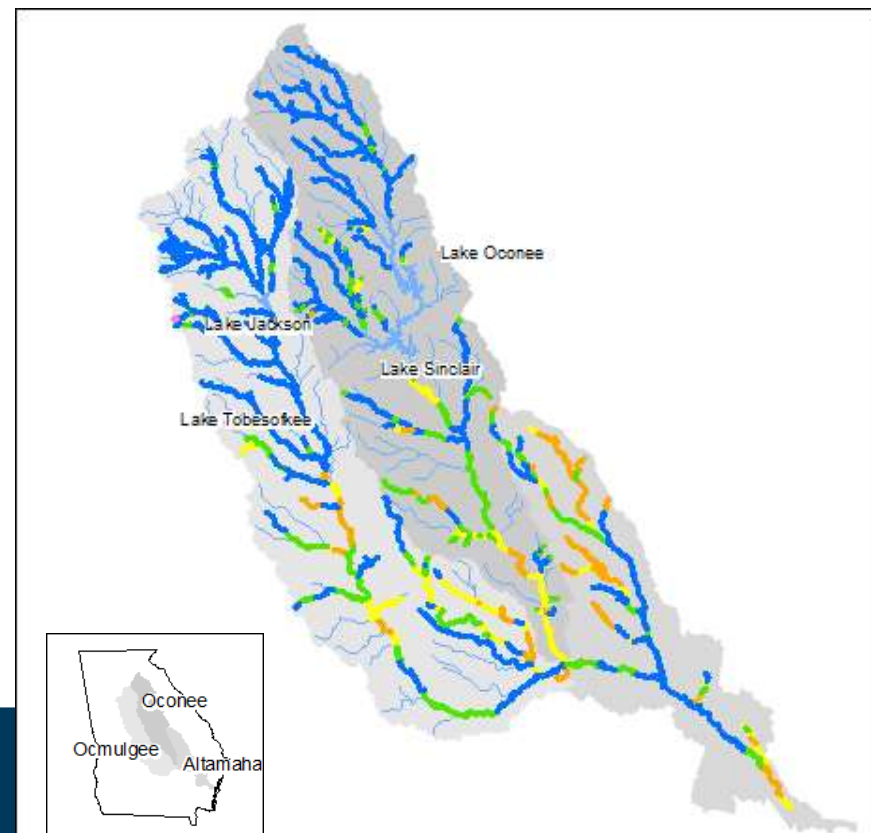
### Legend

#### Available Assimilative Capacity

- Very Good  $\geq 1$  mg/L DO available
- Good 0.5 mg/L to  $< 1$  mg/L DO available
- Moderate 0.2 mg/L to  $< 0.5$  mg/L DO available
- Limited  $> 0$  mg/L to  $< 0.2$  mg/L DO available
- At Assimilative Capacity 0 mg/L DO available
- None or Exceeded  $< 0.0$  mg/L DO available
- Unmodeled Lakes and Streams

# Middle Ocmulgee Assimilative Capacity

Future (2050)

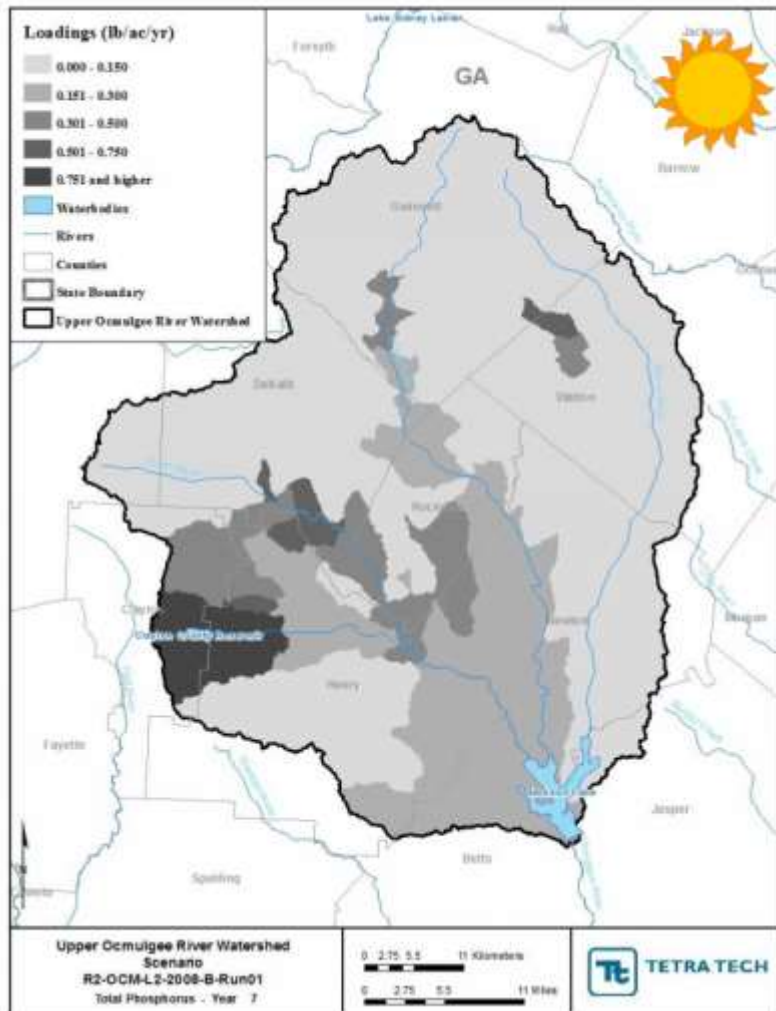
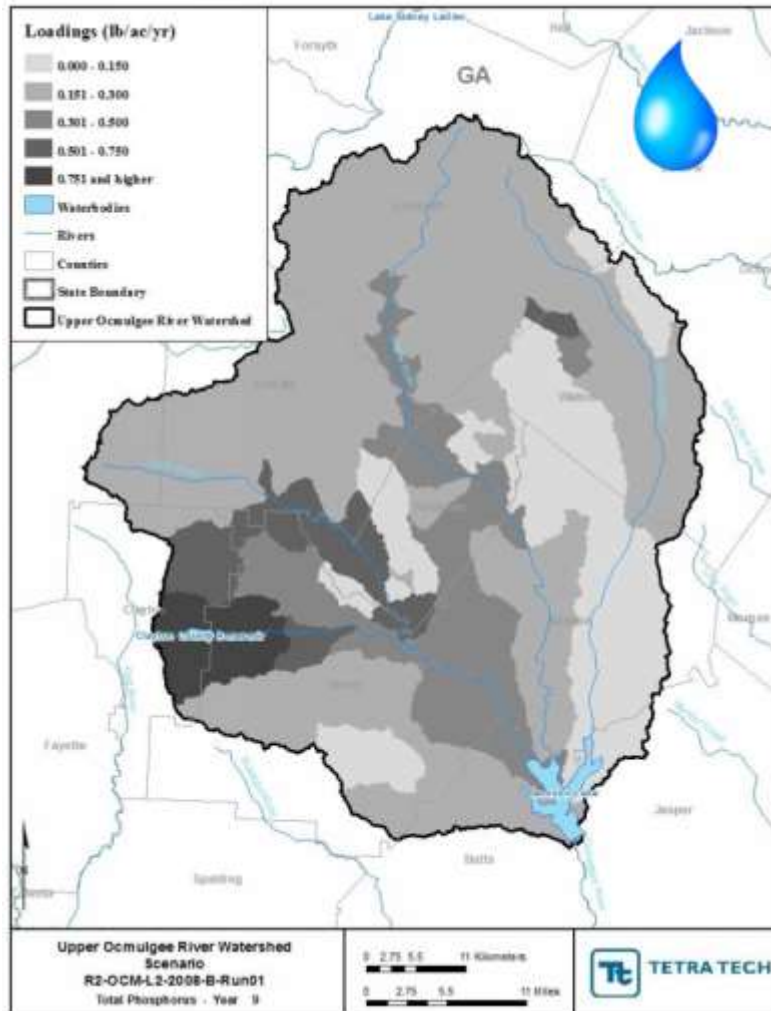


# Surface Water Quality/Assimilative Capacity Gaps

- EPD also modeled nutrients (Total Nitrogen and Total Phosphorus) in the region
  - Dry & Wet years
  - Areas of high loadings in **dry** years can indicate point sources as potential cause (i.e., wastewater discharge)
  - Areas of high loading in **wet** years are indicative on nonpoint source runoff
- Lake Models for Chlorophyll a

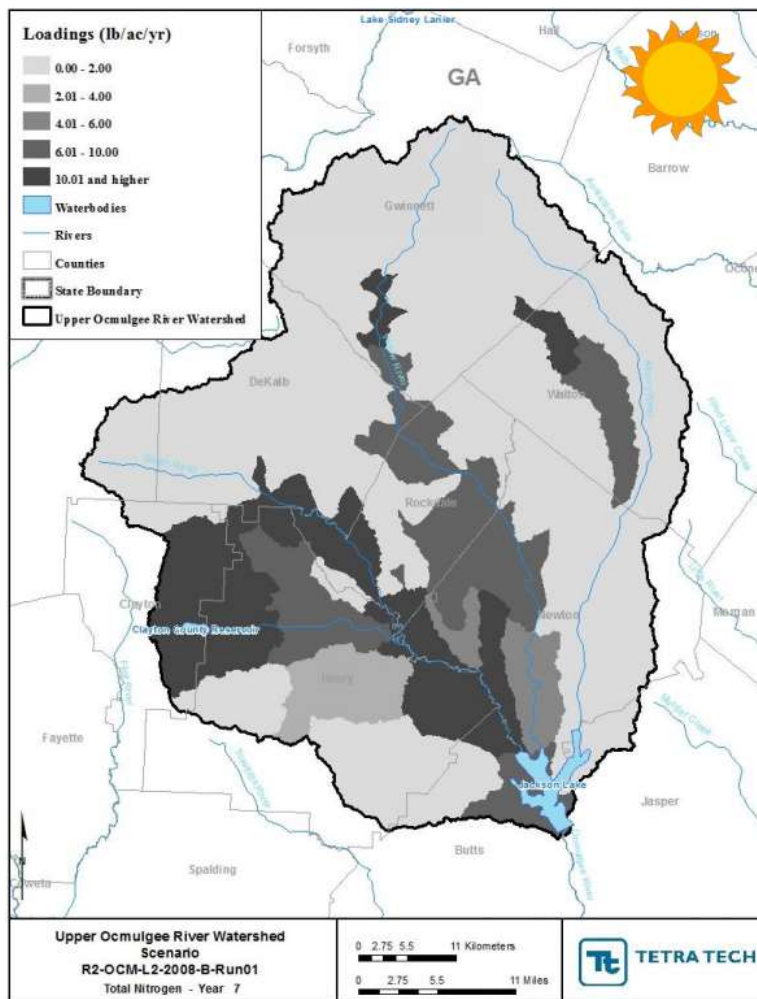
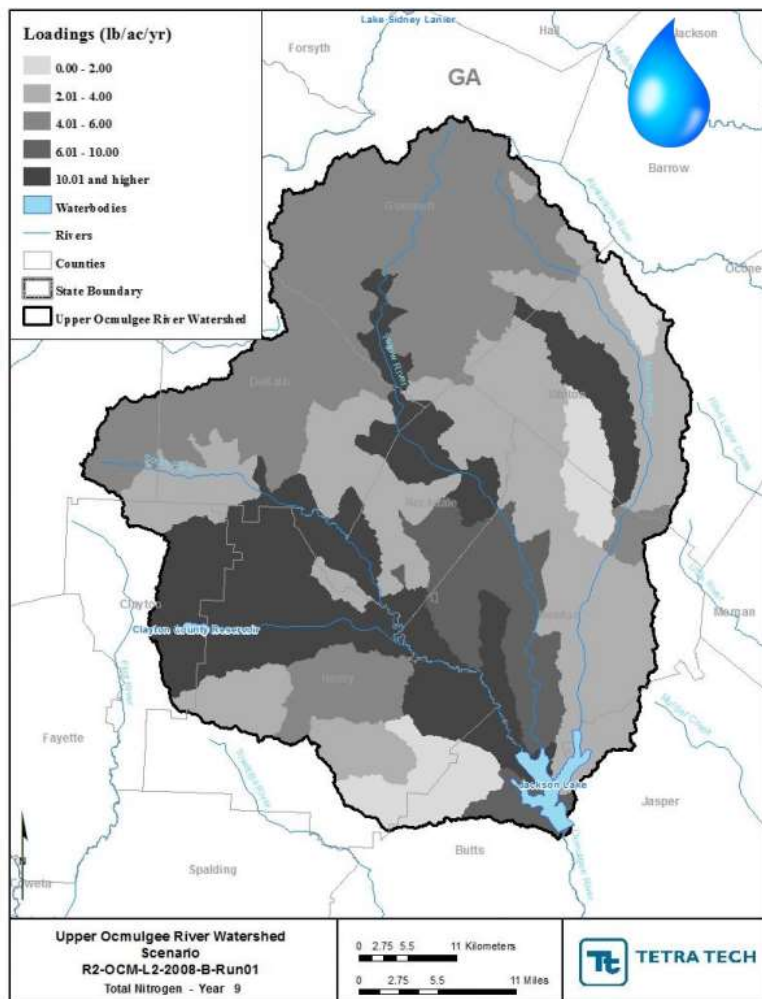
# Surface Water Quality/Assimilative Capacity Gaps

UPPER OCMULGEE TOTAL P HEAT MAPS



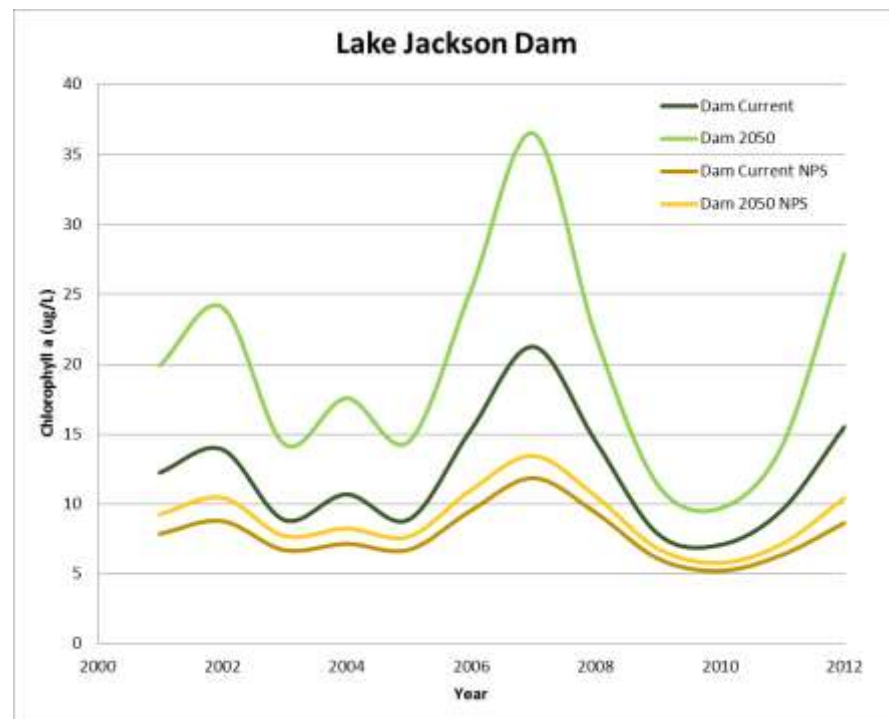
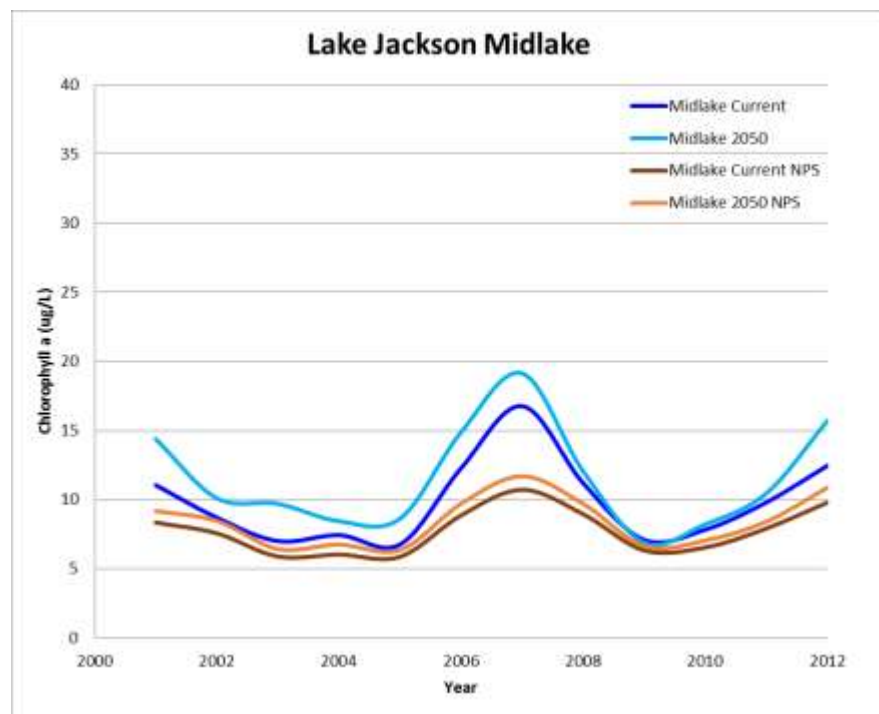
# Surface Water Quality/Assimilative Capacity Gaps

## UPPER OCMULGEE TOTAL N HEAT MAPS



# Surface Water Quality/Assimilative Capacity Summary

- Comparison of current and future lake chlorophyll a levels
  - Opportunities to implement practices to reduce Point and Non Point Source inputs





# Middle Ocmulgee Region Gap Summary: Water Quality

- Assimilative Capacity/Water Quality Resource Assessment Summary:
  - Assimilative capacity for DO generally improving over planning horizon
  - Many areas impacted by nutrient loadings
- Management Practices Considerations:
  - Areas of high loadings in dry years may indicate point sources (i.e., wastewater discharge)
  - Areas of high loading in wet years are indicative of nonpoint source runoff
  - Review Priority Water Quality Management Practices

# Middle Ocmulgee Gap Summary

County	Groundwater Gaps	Surface Water Gaps	Water Quality – Assimilative Capacity Gaps	Water Quality 303 (d)
Bibb		No potential gaps at the Jackson and Lumber nodes.	All streams in the Middle Ocmulgee Regional Water Planning Area have assimilative capacity at least at the “limited” and above level.	Yes
Butts				Yes
Crawford				Yes
Houston				Yes
Jasper				Yes
Jones				Yes
Lamar				Yes
Monroe				Yes
Newton				Yes
Peach				Yes
Pulaski				Yes
Twiggs				Yes
Total	0	0	0	12

# Middle Ocmulgee Region Council Meeting 3

- Review **Council Coordination** Recommendations

The Council recommended the following actions for inter-Council coordination:

- Meetings between Chairs/Vice-Chairs in the same manner that were facilitated in the original kick-off meeting
- Meetings to coordinate with Councils that have a direct linkage with the Middle Ocmulgee Region (specifically Metro North Georgia and Altamaha.)
- Inviting and sending representatives to other Council meetings
- Utilizing the Middle Georgia Regional Commission (MGRC) as an intermediary between both the Upper Flint and Upper Oconee Regional Water Planning Councils



# Middle Ocmulgee Region Council Meeting 3

- Report Back
  - What insights, messages, concerns, or priorities would be most beneficial to bring back and share with other Councils at this afternoon's Joint Council Meeting?

# Middle Ocmulgee Region Council Meeting 3

## Council Meeting Business:

- Approve meeting summary from Council Meeting 2
- 319(h) Grant Project update/Seed Grant Updates
- Potential Office Hours/Subcommittee conference call
- New Business
- Public Comment Period



# Georgia's State Water Plan

## **Public Comment Period**

- Please limit comments to 3 minutes total
- Council encourages written submission of comments as well

[www.georgiawaterplanning.org](http://www.georgiawaterplanning.org)

# Thank You!

Questions? Comments? Need  
More Information?

[Michelle.Vincent@Jacobs.com](mailto:Michelle.Vincent@Jacobs.com)

[Ted.hendrickx@dnr.ga.gov](mailto:Ted.hendrickx@dnr.ga.gov)